

**PAB592Po01**

**Polyclonal Antibody to Caspase 1 (CASP1)**

**Organism Species: *Sus scrofa*; *Porcine* (Pig)**

***Instruction manual***

FOR RESEARCH USE ONLY

NOT FOR USE IN CLINICAL DIAGNOSTIC PROCEDURES

---

13th Edition (Revised in Aug, 2023)

## **[ PROPERTIES ]**

**Source:** Polyclonal antibody preparation

**Host:** Rabbit

**Purification:** Antigen-specific affinity chromatography followed by Protein A affinity chromatography

**Traits:** Liquid

**Concentration:** 0.5mg/mL

**UOM:** 100µL

**Cross Reactivity:** Human

**Applications:** WB,IHC,ICC/IF

## **[ IMMUNOGEN ]**

**Immunogen:** Recombinant CASP1 (Asn120~Asp297) expressed in *E.coli*

**Accession No.:** RPB592Po01

## **[ APPLICATIONS ]**

Western blotting: 0.01-2µg/mL;

Immunohistochemistry: 5-20µg/mL;

Immunofluorescence: 5-30µg/mL;

Optimal working dilutions must be determined by end user.

## **[ FORMULATION ]**

**Form & Buffer:** Supplied as solution form in 0.01M PBS, pH7.4, containing 0.05% Proclin-300, 50% glycerol.

## **[ STORAGE AND STABILITY ]**

**Storage:** Avoid repeated freeze/thaw cycles.

Store at 4°C for frequent use.

Aliquot and store at -20°C for 24 months.

**Stability Test:** The thermal stability is described by the loss rate. The loss rate was determined by accelerated thermal degradation test, that is, incubate the protein at 37°C for 48h, and no

obvious degradation and precipitation were observed. The loss rate is less than 5% within the expiration date under appropriate storage condition.

**[ IDENTIFICATION ]**

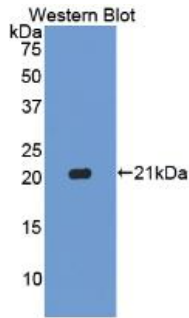
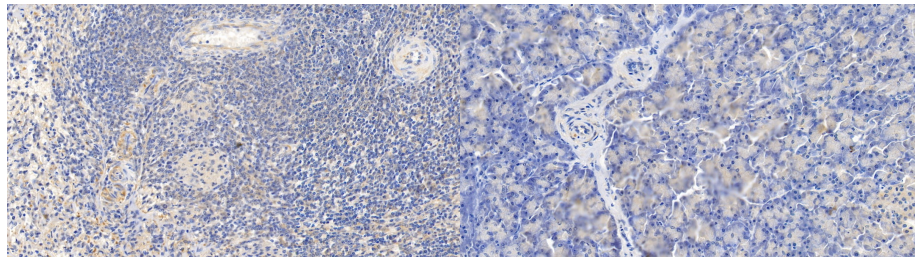
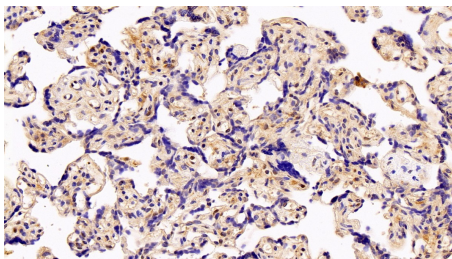


Figure. Western Blot; Sample: Recombinant CASP1, Porcine.

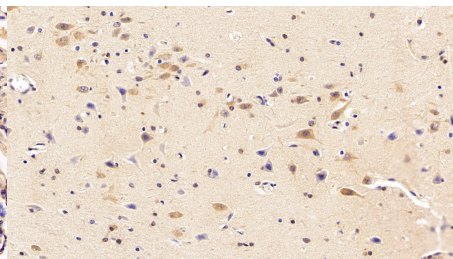


DAB staining on IHC-P;  
Samples: Porcine Spleen Tissue;  
Primary Ab: 10µg/ml Rabbit Anti-Porcine CASP1 Antibody  
Second Ab: 2µg/mL HRP-Linked Caprine Anti-Rabbit IgG Polyclonal Antibody  
(Catalog: SAA544Rb19)

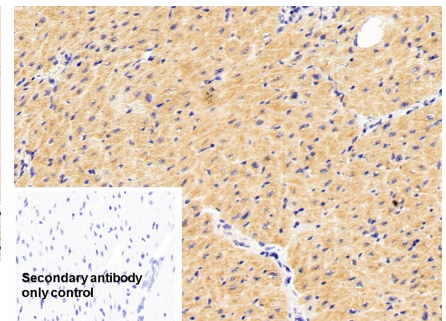
DAB staining on IHC-P;  
Samples: Porcine Pancreas Tissue;  
Primary Ab: 10µg/ml Rabbit Anti-Porcine CASP1 Antibody  
Second Ab: 2µg/mL HRP-Linked Caprine Anti-Rabbit IgG Polyclonal Antibody  
(Catalog: SAA544Rb19)



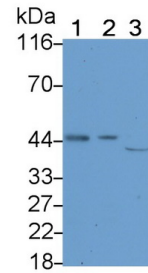
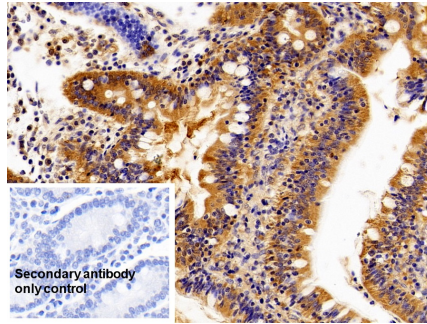
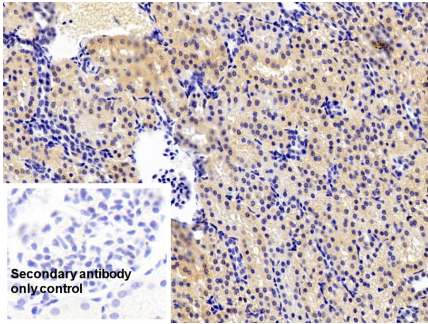
DAB staining on IHC-P;  
Sample: Human Placenta Tissue;  
Primary Ab: 10ug/ml Rabbit Anti-Porcine CASP1 Antibody  
Second Ab: 2µg/mL HRP-Linked Caprine Anti-Rabbit IgG Polyclonal Antibody  
(Catalog: SAA544Rb19)



DAB staining on IHC-P;  
Sample: Porcine Cerebrum Tissue;  
Primary Ab: 10ug/ml Rabbit Anti-Porcine CASP1 Antibody  
Second Ab: 2µg/mL HRP-Linked Caprine Anti-Rabbit IgG Polyclonal Antibody  
(Catalog: SAA544Rb19)



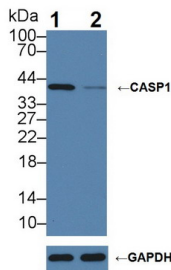
DAB staining on IHC-P;  
Sample: Porcine Cardiac Muscle Tissue  
Primary Ab: 10µg/ml Rabbit Anti-Porcine CASP1 Antibody  
Control: Used PBS instead of primary antibody  
Second Ab: 2µg/ml HRP-Linked Caprine Anti-Rabbit IgG Polyclonal Antibody  
(Catalog: SAA544Rb19)



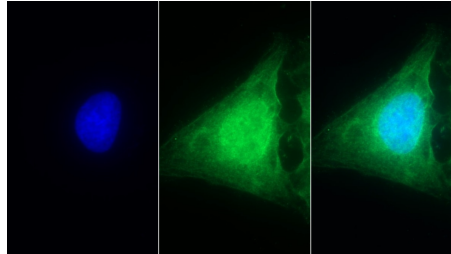
DAB staining on IHC-P;  
 Sample: Porcine Kidney Tissue  
 Primary Ab: 10µg/ml Rabbit Anti-Porcine CASP1 Antibody  
 Control: Used PBS instead of primary antibody  
 Second Ab: 2µg/ml HRP-Linked Caprine Anti-Rabbit IgG Polyclonal Antibody  
 (Catalog: SAA544Rb19)

DAB staining on IHC-P; Sample: Porcine Small intestine Tissue  
 Primary Ab: 10µg/ml Rabbit Anti-Porcine CASP1 Antibody  
 Control: Used PBS instead of primary antibody  
 Second Ab: 2µg/ml HRP-Linked Caprine Anti-Rabbit IgG Polyclonal Antibody (Catalog: SAA544Rb19)

Western Blot; Sample: Lane1: Porcine Spleen lysate; Lane2: Porcine Lung lysate; Lane3: Raji cell lysate  
 Primary Ab: 1µg/ml Rabbit Anti-Porcine CASP1 Antibody  
 Second Ab: 0.2µg/mL HRP-Linked Caprine Anti-Rabbit IgG Polyclonal Antibody (Catalog: SAA544Rb19)



Knockout Verification:  
 Lane 1: Wild-type Raji cell lysate;  
 Lane 2: CASP1 knockout Raji cell lysate;  
 Predicted MW: 10,30,35,43,45kDa  
 Observed MW: 42kDa  
 Primary Ab: 5µg/ml Rabbit Anti-Porcine CASP1 Antibody  
 Second Ab: 0.2µg/mL HRP-Linked Caprine Anti-Rabbit IgG Polyclonal Antibody



FITC staining on IF;  
 Sample: Human U2OS cell;  
 Primary Ab: 30µg/ml Rabbit Anti-Porcine CASP1 Antibody  
 Second Ab: 2µg/ml FITC-Linked Caprine Anti-Rabbit IgG Polyclonal Antibody  
 (Catalog: SAA544Rb18)

(Catalog: SAA544Rb19)

**[ IMPORTANT NOTE ]**

The kit is designed for research use only, we will not be responsible for any issue if the kit was used in clinical diagnostic or any other procedures.