

**PAC418Hu01**

**Polyclonal Antibody to Catalase (CAT)**

**Organism Species: *Homo sapiens* (Human)**

***Instruction manual***

FOR RESEARCH USE ONLY

NOT FOR USE IN CLINICAL DIAGNOSTIC PROCEDURES

---

13th Edition (Revised in Aug, 2023)

**[ PROPERTIES ]**

**Source:** Polyclonal antibody preparation

**Host:** Rabbit

**Purification:** Antigen-specific affinity chromatography followed by Protein A affinity chromatography

**Traits:** Liquid

**Concentration:** 0.5mg/mL

**UOM:** 100µL

**Cross Reactivity:** Mouse;Rat

**Applications:** WB,IHC,ICC/IF; FCM

**[ IMMUNOGEN ]**

**Immunogen:** Recombinant CAT (Ala401~Glu523) expressed in *E.coli*

**Accession No.:** RPC418Hu01

**[ APPLICATIONS ]**

Western blotting:0.01-2µg/mL;

Immunohistochemistry: 5-20µg/mL;

Immunofluorescence:5-20µg/mL;

Flow cytometry:20µg/ml;

Optimal working dilutions must be determined by end user.

**[ FORMULATION ]**

**Form & Buffer:** Supplied as solution form in 0.01M PBS, pH7.4, containing 0.05% Proclin-300, 50% glycerol.

**[ STORAGE AND STABILITY ]**

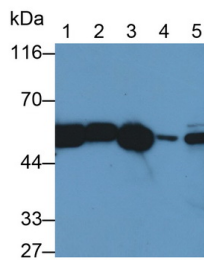
**Storage:** Avoid repeated freeze/thaw cycles.

Store at 4°C for frequent use.

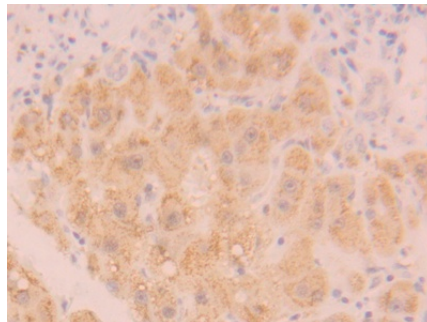
Aliquot and store at -20°C for 24 months.

**Stability Test:** The thermal stability is described by the loss rate. The loss rate was determined by accelerated thermal degradation test, that is, incubate the protein at 37°C for 48h, and no obvious degradation and precipitation were observed. The loss rate is less than 5% within the expiration date under appropriate storage condition.

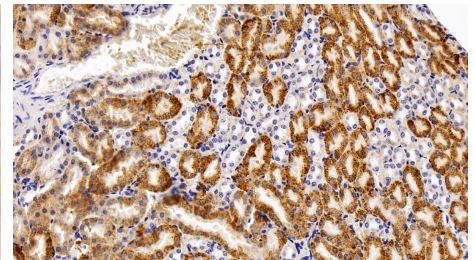
**[ IDENTIFICATION ]**



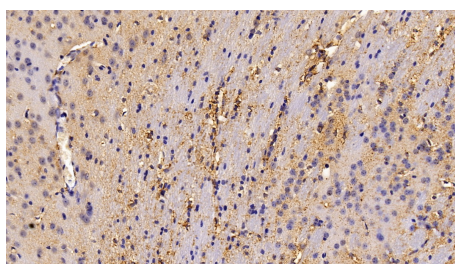
Western Blot; Sample: Lane1: Rat Liver lysate; Lane2: Rat Kidney lysate; Lane3: Mouse Liver lysate; Lane4: HepG2 cell lysate; Lane5: Hela cell lysate Primary Ab: 0.04µg/ml Rabbit Anti-Human CAT Antibody Second Ab: 0.2µg/mL HRP-Linked Caprine Anti-Rabbit IgG Polyclonal Antibody (Catalog: SAA544Rb19)



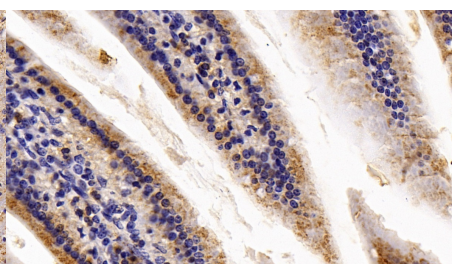
DAB staining on IHC-P; Samples: Human Liver Tissue; Primary Ab: 20µg/ml Rabbit Anti-Human CAT Antibody Second Ab: 2µg/mL HRP-Linked Caprine Anti-Rabbit IgG Polyclonal Antibody (Catalog: SAA544Rb19)



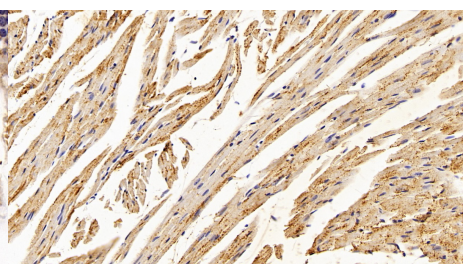
DAB staining on IHC-P; Sample: Mouse Kidney Tissue; Primary Ab: 20ug/ml Rabbit Anti-Human CAT Antibody Second Ab: 2µg/mL HRP-Linked Caprine Anti-Rabbit IgG Polyclonal Antibody (Catalog: SAA544Rb19)



DAB staining on IHC-P; Sample: Mouse Cerebrum Tissue; Primary Ab: 20ug/ml Rabbit Anti-Human CAT Antibody Second Ab: 2µg/mL HRP-Linked Caprine Anti-Rabbit IgG Polyclonal Antibody

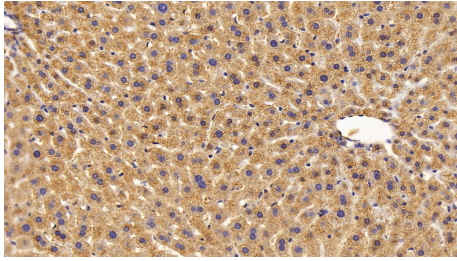


DAB staining on IHC-P; Sample: Mouse Small intestine Tissue; Primary Ab: 20ug/ml Rabbit Anti-Human CAT Antibody Second Ab: 2µg/mL HRP-Linked Caprine Anti-Rabbit IgG Polyclonal Antibody



DAB staining on IHC-P; Sample: Mouse Cardiac Muscle Tissue; Primary Ab: 20ug/ml Rabbit Anti-Human CAT Antibody Second Ab: 2µg/mL HRP-Linked Caprine Anti-Rabbit IgG Polyclonal Antibody

(Catalog: SAA544Rb19)



DAB staining on IHC-P;

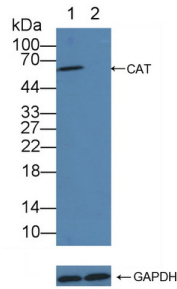
Sample: Mouse Liver Tissue;

Primary Ab: 20ug/ml Rabbit Anti-Human CAT Antibody

Second Ab: 2µg/mL HRP-Linked Caprine Anti-Rabbit IgG Polyclonal Antibody

(Catalog: SAA544Rb19)

(Catalog: SAA544Rb19)



Knockout Varification:

Lane 1: Wild-type HepG2 cell lysate;

Lane 2: CAT knockout HepG2 cell lysate;

Predicted MW: 60kd

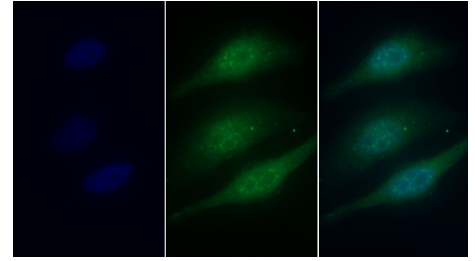
Observed MW: 60kd

Primary Ab: 2µg/ml Rabbit Anti-Human CAT Antibody

Second Ab: 0.2µg/mL HRP-Linked Caprine Anti-Rabbit IgG Polyclonal Antibody

(Catalog: SAA544Rb19)

(Catalog: SAA544Rb19)



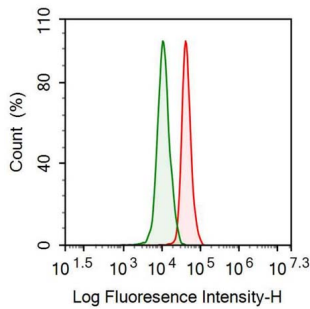
FITC staining on IF;

Sample: Human HepG2 cell;

Primary Ab: 20µg/ml Rabbit Anti-Human CAT Antibody

Second Ab: 2µg/ml FITC-Linked Caprine Anti-Rabbit IgG Polyclonal Antibody

(Catalog: SAA544Rb18)



Human THP1 cell was fixed with 2% paraformaldehyde (10 min), permeabilised with 0.1% BSA-Triton X-100, then stained with 20µg/ml rabbit Anti-human CAT Polyclonal Antibody (Catalog PAC418Hu01, red histogram) or Isotype control antibody (Catalog IS067-Rb01, green histogram), followed

by 1µg/ml FITC-conjugated Anti-rabbit  
IgG Secondary Antibody (Catalog  
SAA544Rb18).

**[ IMPORTANT NOTE ]**

The kit is designed for research use only, we will not be responsible for any issue if the kit was used in clinical diagnostic or any other procedures.