

PAA781Hu01

Polyclonal Antibody to Cluster Of Differentiation 276 (CD276)

Organism Species: *Homo sapiens (Human)*

Instruction manual

FOR RESEARCH USE ONLY

NOT FOR USE IN CLINICAL DIAGNOSTIC PROCEDURES

13th Edition (Revised in Aug, 2023)

[PROPERTIES]

Source: Polyclonal antibody preparation

Host: Rabbit

Purification: Antigen-specific affinity chromatography followed by Protein A affinity chromatography

Traits: Liquid

Concentration: 0.5mg/mL

UOM: 100µL

Cross Reactivity: N/A

Applications: WB; IHC; FCM

[IMMUNOGEN]

Immunogen: Recombinant CD276 (Thr47~Ser219) expressed in *E.coli*

Accession No.: RPA781Hu01

[APPLICATIONS]

Western blotting: 0.01-3µg/mL;

Immunohistochemistry: 5-30µg/mL;

For flow cytometry: 0.5-2 µg per 10⁶ cells in 100 µl volume;

Optimal working dilutions must be determined by end user.

[FORMULATION]

Form & Buffer: Supplied as solution form in 0.01M PBS, pH7.4, containing 0.05% Proclin-300, 50% glycerol.

[STORAGE AND STABILITY]

Storage: Avoid repeated freeze/thaw cycles.

Store at 4°C for frequent use.

Aliquot and store at -20°C for 24 months.

Stability Test: The thermal stability is described by the loss rate. The loss rate was determined by accelerated thermal degradation test, that is, incubate the protein at 37°C for 48h, and no

obvious degradation and precipitation were observed. The loss rate is less than 5% within the expiration date under appropriate storage condition.

[IDENTIFICATION]

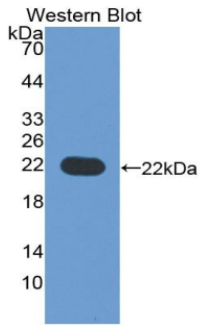
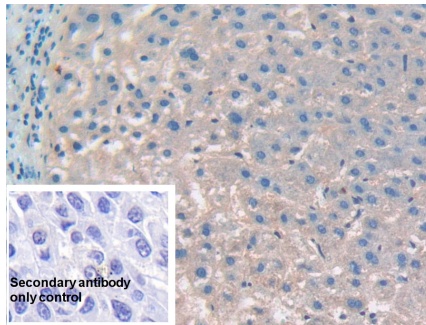
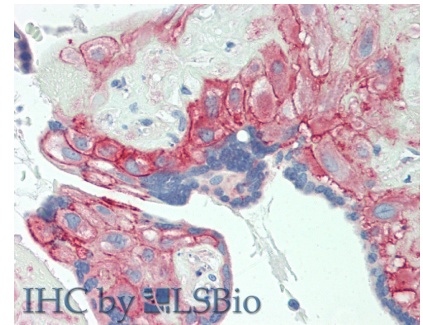


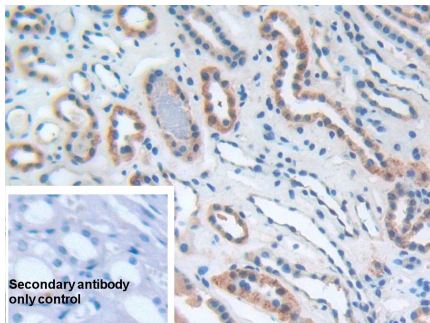
Figure. Western Blot; Sample: Recombinant CD276, Human.



DAB staining on IHC-P; Samples: Human Liver cancer Tissue; Primary Ab: 10µg/ml Rabbit Anti-Human CD276 Antibody Second Ab: 2µg/mL HRP-Linked Caprine Anti-Rabbit IgG Polyclonal Antibody (Catalog: SAA544Rb19)

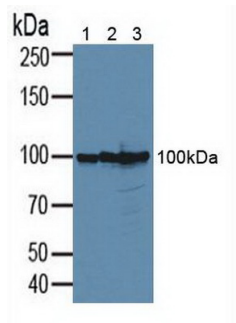


Vector Red staining on IHC-P; Samples: Human Placenta Tissue; Primary Ab: 10µg/ml Rabbit Anti-Human CD276 Antibody Second Ab: 2µg/mL HRP-Linked Caprine Anti-Rabbit IgG Polyclonal Antibody

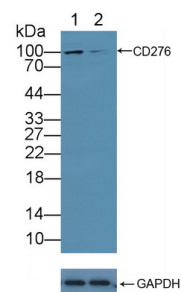


DAB staining on IHC-P; Sample: Human Kidney Tissue; Primary Ab: 10µg/ml Rabbit Anti-Human CD276 Antibody Second Ab: 2µg/mL HRP-Linked Caprine Anti-Rabbit IgG Polyclonal Antibody (Catalog: SAA544Rb19)

Secondary antibody only control: Used PBS instead of primary antibody,



Western Blot; Sample: Lane1: 293T cell lysate; Lane2: PC3 cell lysate; Lane3: MCF7 cell lysate Primary Ab: 3µg/ml Rabbit Anti-Human CD276 Antibody Second Ab: 0.2µg/mL HRP-Linked Caprine Anti-Rabbit IgG Polyclonal Antibody (Catalog: SAA544Rb19)

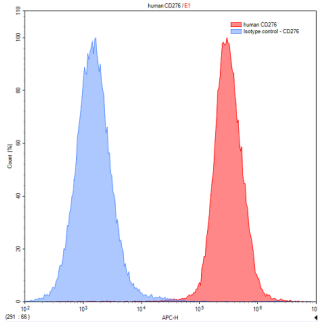


Knockout Varification: Lane 1: Wild-type 293T cell lysate; Lane 2: CD276 knockout 293T cell lysate; Predicted MW: 57,53,33kd Observed MW: 100kd Primary Ab: 3µg/ml Rabbit Anti-Human CD276 Antibody Second Ab: 0.2µg/mL HRP-Linked Caprine Anti-Rabbit IgG Polyclonal

Second Ab: 2µg/mL HRP-Linked
Caprine Anti-Rabbit IgG Polyclonal
Antibody

Antibody
(Catalog: SAA544Rb19)

(Catalog: SAA544Rb19)



ChoK1 transfected with human CD276 (Stable transfection) was stained with rabbit Anti-human CD276 Polyclonal Antibody (Catalog # PAA781Hu01), filled red histogram) or Isotype control antibody (Catalog # IS067-Rb01, filled blue histogram), followed by CY5-conjugated Anti-rabbit IgG Secondary Antibody (Catalog # SAA544Rb11). Cells were fixed with 4% paraformaldehyde and permeabilized with 0.1% Triton X-100.

[**IMPORTANT NOTE**]

The kit is designed for research use only, we will not be responsible for any issue if the kit was used in clinical diagnostic or any other procedures.