

PAA389Mu01

Polyclonal Antibody to Complement Component 4a (C4a)

Organism Species: *Mus musculus* (Mouse)

Instruction manual

FOR RESEARCH USE ONLY

NOT FOR USE IN CLINICAL DIAGNOSTIC PROCEDURES

13th Edition (Revised in Aug, 2023)

[PROPERTIES]

Source: Polyclonal antibody preparation

Host: Rabbit

Purification: Antigen-specific affinity chromatography followed by Protein A affinity chromatography

Traits: Liquid

Concentration: 0.5mg/ml

UOM: 100µl

Cross Reactivity: Rat.

Applications: WB; IHC

[IMMUNOGEN]

Immunogen: Recombinant C4a (Asn678~Arg753) expressed in *E.coli*

Accession No.: RPA389Mu02

[APPLICATIONS]

Western blotting: 0.01-3µg/mL;

Immunohistochemistry: 5-30µg/mL;

Optimal working dilutions must be determined by end user.

[FORMULATION]

Form & Buffer: Supplied as solution form in PBS, pH7.4, containing 0.02% NaN₃, 50% glycerol.

[STORAGE AND STABILITY]

Storage: Avoid repeated freeze/thaw cycles.

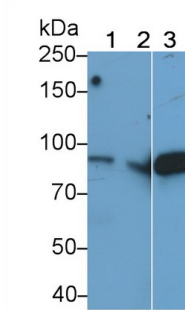
Store at 4°C for frequent use.

Aliquot and store at -20°C for 24 months.

Stability Test: The thermal stability is described by the loss rate. The loss rate was determined by accelerated thermal degradation test, that is, incubate the protein at 37°C for 48h, and no obvious degradation and precipitation were observed. The loss rate is less than 5% within the

expiration date under appropriate storage condition.

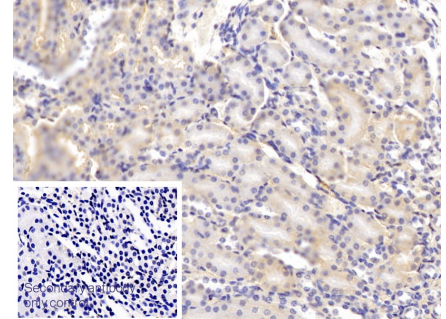
[IDENTIFICATION]



Western Blot; Sample: Lane1: Mouse Plasma; Lane2: Rat Serum; Lane3: Rat Plasma
 Primary Ab: 1 μ g/ml Rabbit Anti-Mouse C4a Antibody
 Second Ab: 0.2 μ g/mL HRP-Linked Caprine Anti-Rabbit IgG Polyclonal Antibody
 (Catalog: SAA544Rb19) Selected

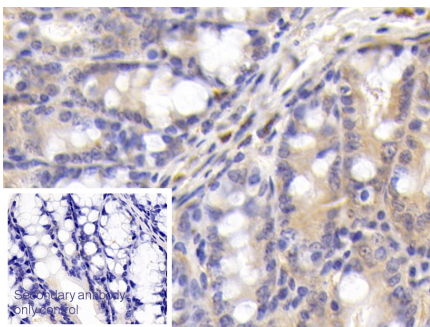


Western Blot; Sample: Mouse Placenta lysate
 Primary Ab: 0.2 μ g/ml Rabbit Anti-Mouse C4a Antibody
 Second Ab: 0.2 μ g/mL HRP-Linked Caprine Anti-Rabbit IgG Polyclonal Antibody
 (Catalog: SAA544Rb19) Selected

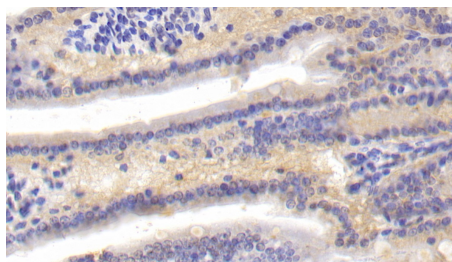


DAB staining on IHC-P;
 Sample: Mouse Kidney Tissue;
 Primary Ab: 30 μ g/ml Rabbit Anti-Mouse C4a Antibody
 Second Ab: 2 μ g/mL HRP-Linked Caprine Anti-Rabbit IgG Polyclonal Antibody
 (Catalog: SAA544Rb19)

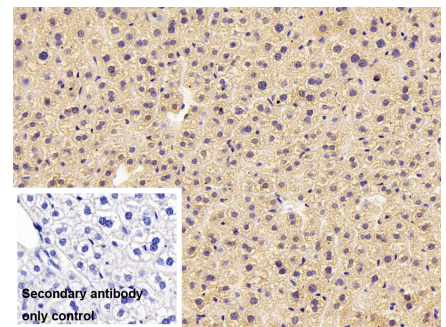
Secondary antibody only control: Used PBS instead of primary antibody,
 Second Ab: 2 μ g/mL HRP-Linked Caprine Anti-Rabbit IgG Polyclonal Antibody
 (Catalog: SAA544Rb19)



DAB staining on IHC-P;
 Sample: Mouse Colon Tissue;
 Primary Ab: 30 μ g/ml Rabbit Anti-Mouse C4a Antibody
 Second Ab: 2 μ g/mL HRP-Linked



DAB staining on IHC-P;
 Samples: Mouse Small intestine Tissue;
 Primary Ab: 30 μ g/ml Rabbit Anti-Mouse C4a Antibody
 Second Ab: 2 μ g/mL HRP-Linked



DAB staining on IHC-P;
 Sample: Mouse Liver Tissue
 Primary Ab: 10 μ g/ml Rabbit Anti-Mouse C4a Antibody
 Control: Used PBS instead of primary

| | | |
|--|---|---|
| Caprine Anti-Rabbit IgG Polyclonal Antibody (Catalog: SAA544Rb19) | Caprine Anti-Rabbit IgG Polyclonal Antibody (Catalog: SAA544Rb19) | antibody Second Ab: 2?g/ml HRP-Linked Caprine Anti-Rabbit IgG Polyclonal Antibody (Catalog: SAA544Rb19) |
| Secondary antibody only control: Used PBS instead of primary antibody, Second Ab: 2µg/mL HRP-Linked Caprine Anti-Rabbit IgG Polyclonal Antibody (Catalog: SAA544Rb19) | | |

[IMPORTANT NOTE]

The kit is designed for research use only, we will not be responsible for any issue if the kit was used in clinical diagnostic or any other procedures.