

PAA476Hu01

Polyclonal Antibody to Cystatin A (CSTA)

Organism Species: *Homo sapiens* (Human)

Instruction manual

FOR RESEARCH USE ONLY

NOT FOR USE IN CLINICAL DIAGNOSTIC PROCEDURES

13th Edition (Revised in Aug, 2023)

[PROPERTIES]

Source: Polyclonal antibody preparation

Host: Rabbit

Purification: Antigen-specific affinity chromatography followed by Protein A affinity chromatography

Traits: Liquid

Concentration: 0.5mg/ml

UOM: 100µl

Cross Reactivity: Porcine

Applications: WB; IHC; ICC; IP.

[IMMUNOGEN]

Immunogen: Recombinant CSTA (Met1~Phe98 (Accession # P01040)) expressed in *E.coli*

Accession No.: RPA476Hu01

[APPLICATIONS]

Western blotting: 0.01-2µg/mL

Immunohistochemistry: 5-20µg/mL

Immunocytochemistry: 5-20µg/mL

Optimal working dilutions must be determined by end user.

[FORMULATION]

Form & Buffer: Supplied as solution form in 0.01M PBS, pH7.4, containing 0.05% Proclin-300, 50% glycerol.

[STORAGE AND STABILITY]

Storage: Avoid repeated freeze/thaw cycles.

Store at 4°C for frequent use.

Aliquot and store at -20°C for 24 months.

Stability Test: The thermal stability is described by the loss rate. The loss rate was determined by accelerated thermal degradation test, that is, incubate the protein at 37°C for 48h, and no

obvious degradation and precipitation were observed. The loss rate is less than 5% within the expiration date under appropriate storage condition.

[IDENTIFICATION]

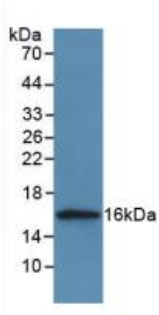
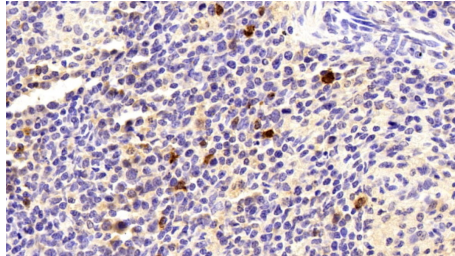
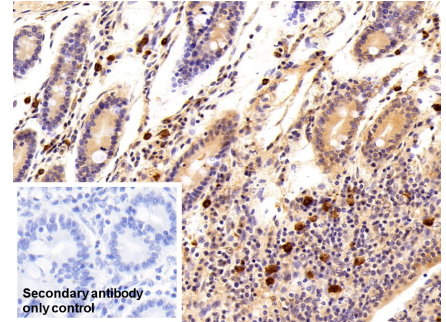


Figure. Western Blot; Sample: Recombinant CSTA, Human.



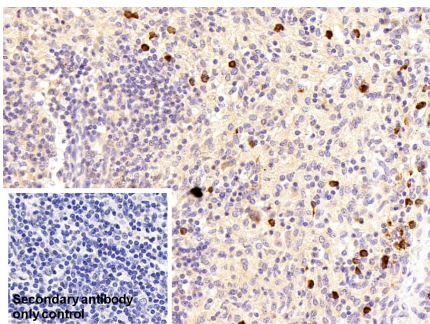
DAB staining on IHC-P;

Sample: Human Spleen Tissue;
 Primary Ab: 10ug/ml Rabbit Anti-Human CSTA Antibody
 Second Ab: 2µg/mL HRP-Linked Caprine Anti-Rabbit IgG Polyclonal Antibody
 (Catalog: SAA544Rb19)



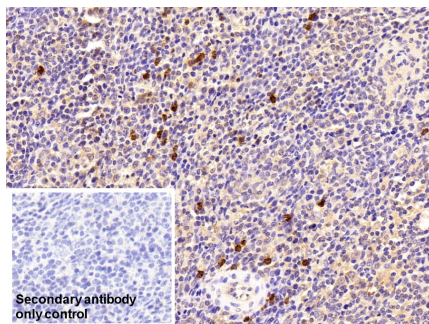
DAB staining on IHC-P;

Sample: Human Small intestine Tissue
 Primary Ab: 10µg/ml Rabbit Anti-Human CSTA Antibody
 Control: Used PBS instead of primary antibody
 Second Ab: 2µg/ml HRP-Linked Caprine Anti-Rabbit IgG Polyclonal Antibody
 (Catalog: SAA544Rb19)



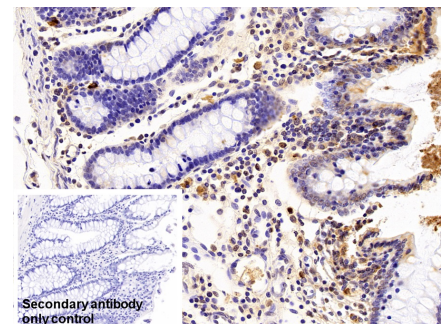
DAB staining on IHC-P;

Sample: Human Lymph node Tissue
 Primary Ab: 10µg/ml Rabbit Anti-Human CSTA Antibody
 Control: Used PBS instead of primary antibody
 Second Ab: 2µg/ml HRP-Linked



DAB staining on IHC-P;

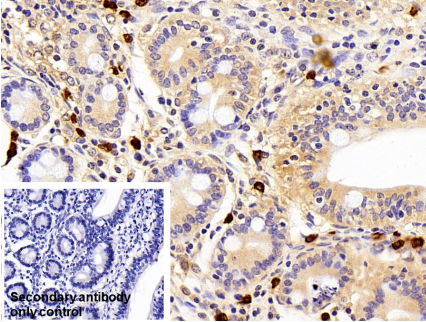
Sample: Human Spleen Tissue
 Primary Ab: 10µg/ml Rabbit Anti-Human CSTA Antibody
 Control: Used PBS instead of primary antibody
 Second Ab: 2µg/ml HRP-Linked



DAB staining on IHC-P;

Sample: Porcine Colon Tissue
 Primary Ab: 10µg/ml Rabbit Anti-Human CSTA Antibody
 Control: Used PBS instead of primary antibody
 Second Ab: 2µg/ml HRP-Linked

Caprine Anti-Rabbit IgG Polyclonal
Antibody
(Catalog: SAA544Rb19)



DAB staining on IHC-P;

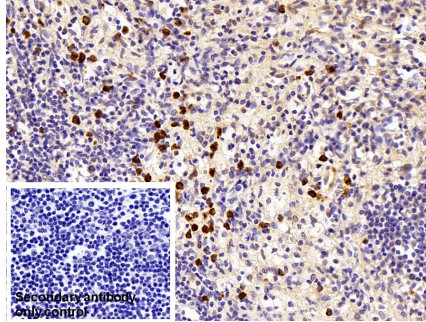
Sample: Porcine Small intestine Tissue

Primary Ab: 10µg/ml Rabbit Anti-Human CSTA Antibody

Control: Used PBS instead of primary antibody

Second Ab: 2?g/ml HRP-Linked Caprine Anti-Rabbit IgG Polyclonal Antibody
(Catalog: SAA544Rb19)

Caprine Anti-Rabbit IgG Polyclonal
Antibody
(Catalog: SAA544Rb19)



DAB staining on IHC-P;

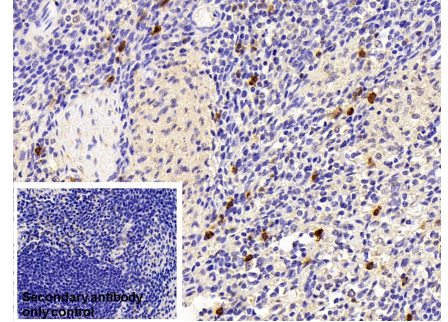
Sample: Porcine Lymph node Tissue

Primary Ab: 10µg/ml Rabbit Anti-Human CSTA Antibody

Control: Used PBS instead of primary antibody

Second Ab: 2?g/ml HRP-Linked Caprine Anti-Rabbit IgG Polyclonal Antibody
(Catalog: SAA544Rb19)

Caprine Anti-Rabbit IgG Polyclonal
Antibody
(Catalog: SAA544Rb19)



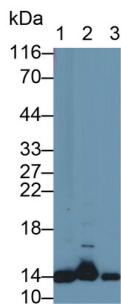
DAB staining on IHC-P;

Sample: Porcine Spleen Tissue

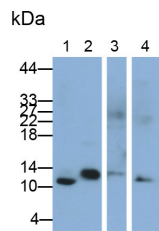
Primary Ab: 10µg/ml Rabbit Anti-Human CSTA Antibody

Control: Used PBS instead of primary antibody

Second Ab: 2?g/ml HRP-Linked Caprine Anti-Rabbit IgG Polyclonal Antibody
(Catalog: SAA544Rb19)



Western Blot; Sample: Lane1: Human Saliva; Lane2: Porcine Skin lysate; Lane3: A431 cell lysate
Primary Ab: 0.1µg/ml Rabbit Anti-Human CSTA Antibody
Second Ab: 0.2µg/mL HRP-Linked Caprine Anti-Rabbit IgG Polyclonal Antibody



Western Blot; Samples: Lane1: Human Saliva; Lane2: Porcine Skin lysate; Lane3: Rat Skin lysate; Lane4: A431 cell lysate;
Primary Ab: 0.1µg/ml Rabbit Anti-Human CSTA Antibody
Second Ab: 0.2?g/ml HRP-Linked Caprine Anti-Rabbit IgG Polyclonal

(Catalog: SAA544Rb19)

Antibody

(Catalog: SAA544Rb19)

[IMPORTANT NOTE]

The kit is designed for research use only, we will not be responsible for any issue if the kit was used in clinical diagnostic or any other procedures.