

PAA516Hu01

Polyclonal Antibody to Cytokeratin 16 (CK16)

Organism Species: *Homo sapiens* (Human)

Instruction manual

FOR RESEARCH USE ONLY

NOT FOR USE IN CLINICAL DIAGNOSTIC PROCEDURES

13th Edition (Revised in Aug, 2023)

[PROPERTIES]

Source: Polyclonal antibody preparation

Host: Rabbit

Purification: Antigen-specific affinity chromatography followed by Protein A affinity chromatography

Traits: Liquid

Concentration: 0.5mg/mL

UOM: 100µL

Cross Reactivity: Mouse;Rat

Applications: WB; IHC; ICC; IP.

[IMMUNOGEN]

Immunogen: Recombinant CK16 (Glu117~Arg419) expressed in *E.coli*

Accession No.: RPA516Hu01

[APPLICATIONS]

Western blotting: 0.01-2µg/mL;

Immunohistochemistry: 5-20µg/mL;

Immunocytochemistry: 5-20µg/mL;

Optimal working dilutions must be determined by end user.

[FORMULATION]

Form & Buffer: Supplied as solution form in PBS, pH7.4, containing 0.02% NaN₃, 50% glycerol.

[STORAGE AND STABILITY]

Storage: Avoid repeated freeze/thaw cycles.

Store at 4°C for frequent use.

Aliquot and store at -20°C for 24 months.

Stability Test: The thermal stability is described by the loss rate. The loss rate was determined by accelerated thermal degradation test, that is, incubate the protein at 37°C for 48h, and no

obvious degradation and precipitation were observed. The loss rate is less than 5% within the expiration date under appropriate storage condition.

[IDENTIFICATION]

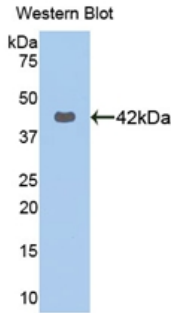
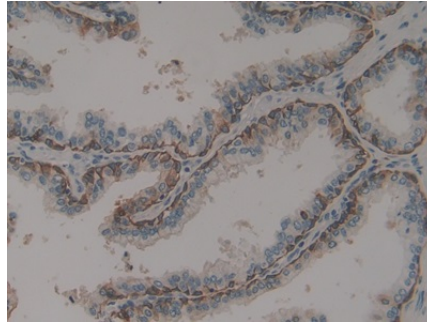
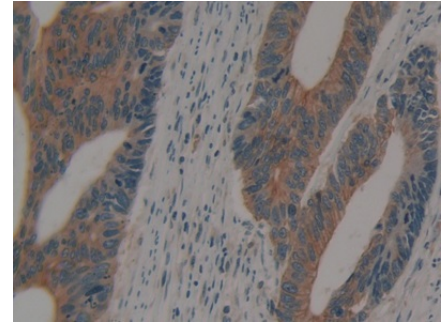


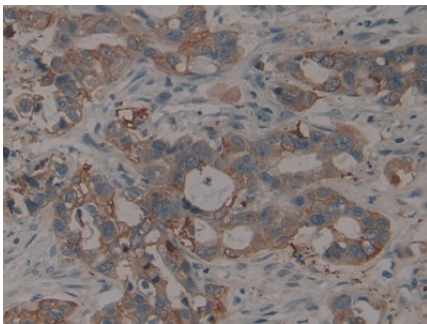
Figure. Western Blot; Sample: Recombinant CK16, Human.



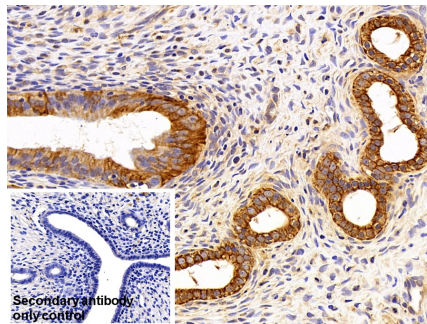
DAB staining on IHC-P;
Samples: Human Prostate Tissue;
Primary Ab: 10µg/ml Rabbit Anti-Human KRT16 Antibody
Second Ab: 2µg/mL HRP-Linked Caprine Anti-Rabbit IgG Polyclonal Antibody
(Catalog: SAA544Rb19)



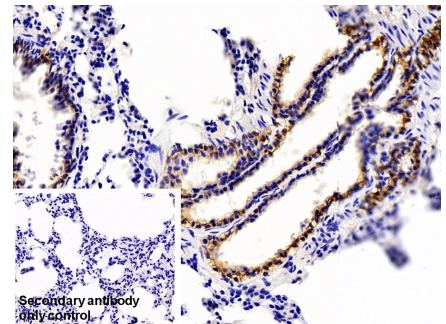
DAB staining on IHC-P;
Samples: Human Colorectal cancer Tissue;
Primary Ab: 10µg/ml Rabbit Anti-Human KRT16 Antibody
Second Ab: 2µg/mL HRP-Linked Caprine Anti-Rabbit IgG Polyclonal Antibody
(Catalog: SAA544Rb19)



DAB staining on IHC-P;
Samples: Human Pancreatic cancer Tissue;
Primary Ab: 10µg/ml Rabbit Anti-Human KRT16 Antibody
Second Ab: 2µg/mL HRP-Linked Caprine Anti-Rabbit IgG Polyclonal Antibody



DAB staining on IHC-P;
Sample: Rat Uterus Tissue
Primary Ab: 30µg/ml Rabbit Anti-Human CK16 Antibody
Control: Used PBS instead of primary antibody
Second Ab: 2?g/ml HRP-Linked Caprine Anti-Rabbit IgG Polyclonal

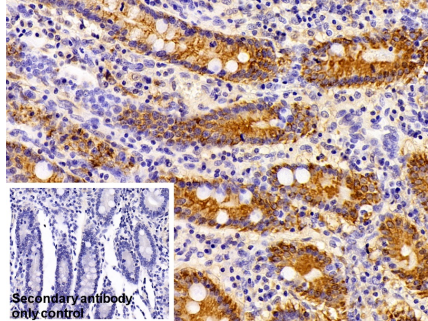
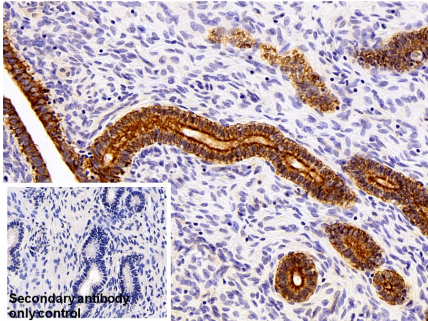


DAB staining on IHC-P;
Sample: Rat Lung Tissue
Primary Ab: 30µg/ml Rabbit Anti-Human CK16 Antibody
Control: Used PBS instead of primary antibody
Second Ab: 2?g/ml HRP-Linked Caprine Anti-Rabbit IgG Polyclonal

(Catalog: SAA544Rb19)

Antibody

(Catalog: SAA544Rb19)



DAB staining on IHC-P;

Sample: Porcine Uterus Tissue

Primary Ab: 10µg/ml Rabbit Anti-Human CK16 Antibody

Control: Used PBS instead of primary antibody

Second Ab: 2µg/ml HRP-Linked Caprine Anti-Rabbit IgG Polyclonal Antibody

(Catalog: SAA544Rb19)

Antibody

(Catalog: SAA544Rb19)



Western Blot; Sample: Human Hela cell lysate;

Primary Ab: 2µg/ml Rabbit Anti-Human KRT16 Antibody

Second Ab: 0.2µg/mL HRP-Linked Caprine Anti-Rabbit IgG Polyclonal Antibody

(Catalog: SAA544Rb19)

DAB staining on IHC-P;

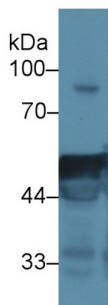
Sample: Porcine Small intestine Tissue

Primary Ab: 10µg/ml Rabbit Anti-Human CK16 Antibody

Control: Used PBS instead of primary antibody

Second Ab: 2µg/ml HRP-Linked Caprine Anti-Rabbit IgG Polyclonal Antibody

(Catalog: SAA544Rb19)

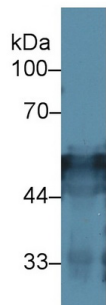


Western Blot; Sample: Rat Tongue lysate;

Primary Ab: 2µg/ml Rabbit Anti-Human KRT16 Antibody

Second Ab: 0.2µg/mL HRP-Linked Caprine Anti-Rabbit IgG Polyclonal Antibody

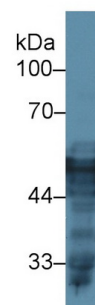
(Catalog: SAA544Rb19)



Western Blot; Sample: Rat Skin lysate; Primary Ab: 2µg/ml Rabbit Anti-Human KRT16 Antibody

Second Ab: 0.2µg/mL HRP-Linked Caprine Anti-Rabbit IgG Polyclonal Antibody

(Catalog: SAA544Rb19)



Western Blot; Sample: Mouse Skin lysate;

Primary Ab: 2µg/ml Rabbit Anti-Human KRT16 Antibody

Second Ab: 0.2µg/mL HRP-Linked Caprine Anti-Rabbit IgG Polyclonal Antibody

(Catalog: SAA544Rb19)

[IMPORTANT NOTE]

The kit is designed for research use only, we will not be responsible for any issue if the kit was used in clinical diagnostic or any other procedures.