

**PAB231Hu01**

**Polyclonal Antibody to Cytokeratin 18 (CK18)**

**Organism Species: *Homo sapiens* (Human)**

***Instruction manual***

FOR RESEARCH USE ONLY

NOT FOR USE IN CLINICAL DIAGNOSTIC PROCEDURES

---

13th Edition (Revised in Aug, 2023)

### **[ PROPERTIES ]**

**Source:** Polyclonal antibody preparation

**Host:** Rabbit

**Purification:** Antigen-specific affinity chromatography followed by Protein A affinity chromatography

**Traits:** Liquid

**Concentration:** 0.5mg/mL

**UOM:** 100µL

**Cross Reactivity:** Rat;Porcine

**Applications:** WB; IHC; ICC/IF

### **[ IMMUNOGEN ]**

**Immunogen:** Recombinant CK18 (Asp238~Leu396) expressed in *E.coli*

**Accession No.:** RPB231Hu01

### **[ APPLICATIONS ]**

Western blotting: 0.01-2µg/mL;

Immunohistochemistry: 5-20µg/mL;

Immunocytochemistry: 5-20µg/mL;

Optimal working dilutions must be determined by end user.

### **[ FORMULATION ]**

**Form & Buffer:** Supplied as solution form in 0.01M PBS, pH7.4, containing 0.05% Proclin-300, 50% glycerol.

### **[ STORAGE AND STABILITY ]**

**Storage:** Avoid repeated freeze/thaw cycles.

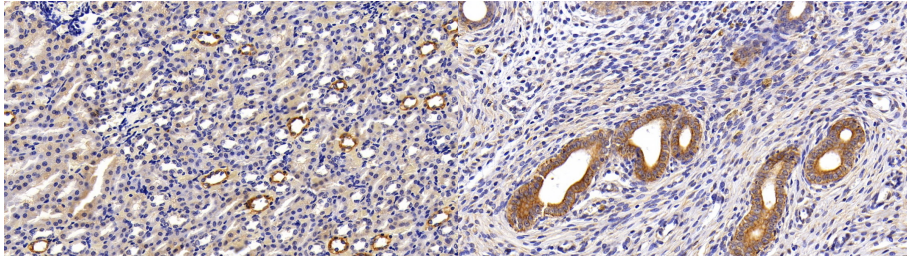
Store at 4°C for frequent use.

Aliquot and store at -20°C for 24 months.

**Stability Test:** The thermal stability is described by the loss rate. The loss rate was determined by accelerated thermal degradation test, that is, incubate the protein at 37°C for 48h, and no

obvious degradation and precipitation were observed. The loss rate is less than 5% within the expiration date under appropriate storage condition.

**[ IDENTIFICATION ]**



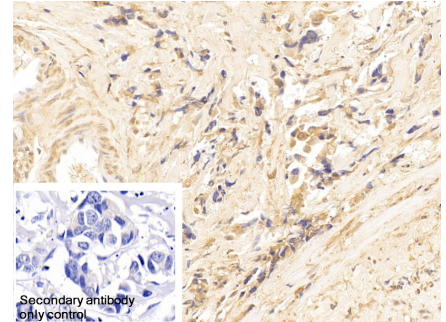
DAB staining on IHC-P;

Sample: Rat Kidney Tissue;

Primary Ab: 10ug/ml Rabbit Anti-Human CK18 Antibody

Second Ab: 2µg/mL HRP-Linked Caprine Anti-Rabbit IgG Polyclonal Antibody

(Catalog: SAA544Rb19)



DAB staining on IHC-P;

Sample: Rat Uterus Tissue;

Primary Ab: 10ug/ml Rabbit Anti-Human CK18 Antibody

Second Ab: 2µg/mL HRP-Linked Caprine Anti-Rabbit IgG Polyclonal Antibody

(Catalog: SAA544Rb19)

DAB staining on IHC-P;

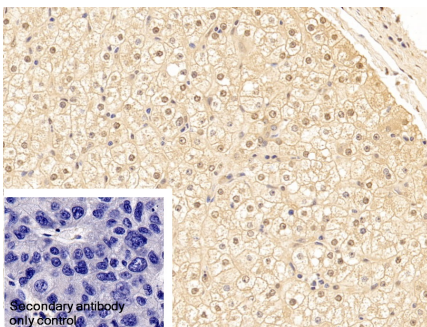
Sample: Human Breast cancer Tissue

Primary Ab: 10µg/ml Rabbit Anti-Human CK18 Antibody

Control: Used PBS instead of primary antibody

Second Ab: 2µg/ml HRP-Linked Caprine Anti-Rabbit IgG Polyclonal Antibody

(Catalog: SAA544Rb19)



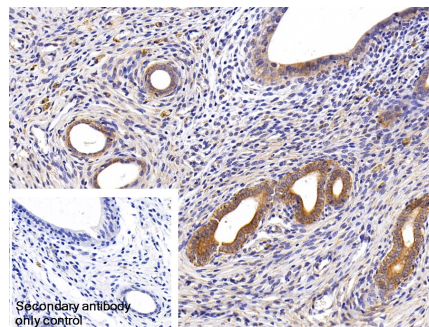
DAB staining on IHC-P;

Sample: Human Liver Tissue

Primary Ab: 10µg/ml Rabbit Anti-Human CK18 Antibody

Control: Used PBS instead of primary antibody

Second Ab: 2µg/ml HRP-Linked



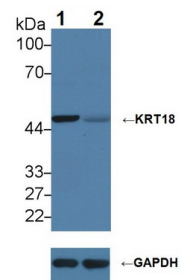
DAB staining on IHC-P;

Sample: Rat Uterus Tissue

Primary Ab: 10µg/ml Rabbit Anti-Human CK18 Antibody

Control: Used PBS instead of primary antibody

Second Ab: 2µg/ml HRP-Linked



Knockout Varification:

Lane 1: Wild-type HeLa cell lysate;

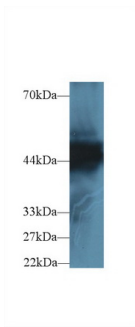
Lane 2: KRT18 knockout HeLa cell lysate;

Predicted MW: 48kDa

Observed MW: 48kDa

Primary Ab: 2µg/ml Rabbit Anti-Human

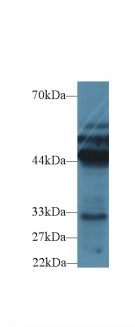
Caprine Anti-Rabbit IgG Polyclonal  
Antibody  
(Catalog: SAA544Rb19)



Western Blot; Sample: Human HeLa cell lysate;

Primary Ab: 2µg/ml Rabbit Anti-Human KRT18 Antibody  
Second Ab: 0.2µg/mL HRP-Linked Caprine Anti-Rabbit IgG Polyclonal Antibody  
(Catalog: SAA544Rb19)

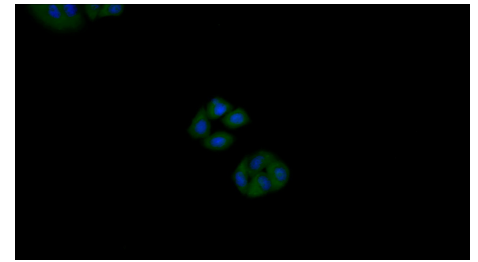
Caprine Anti-Rabbit IgG Polyclonal  
Antibody  
(Catalog: SAA544Rb19)



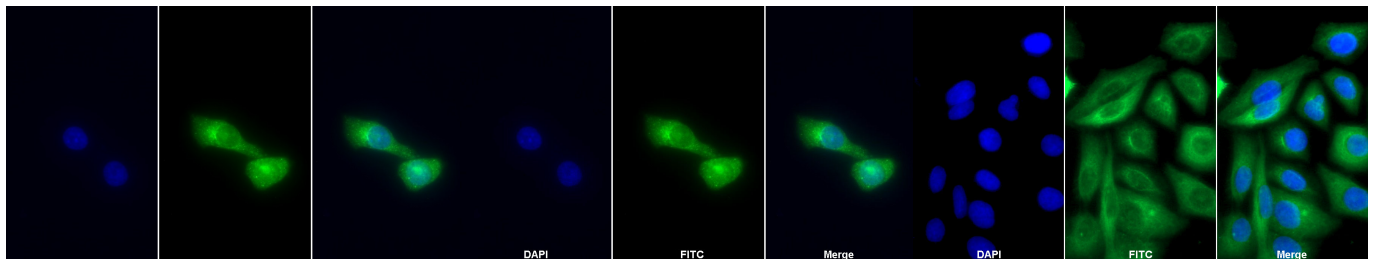
Western Blot; Sample: Porcine Liver lysate;

Primary Ab: 2µg/ml Rabbit Anti-Human KRT18 Antibody  
Second Ab: 0.2µg/mL HRP-Linked Caprine Anti-Rabbit IgG Polyclonal Antibody  
(Catalog: SAA544Rb19)

KRT18 Antibody  
Second Ab: 0.2µg/mL HRP-Linked Caprine Anti-Rabbit IgG Polyclonal Antibody  
(Catalog: SAA544Rb19)



FITC staining on IF;  
Samples: Human MCF7 cell;  
Primary Ab: 20?g/ml Rabbit Anti-Human KRT18 Antibody  
Second Ab: 1.5?g/ml FITC-Linked Caprine Anti-Rabbit IgG Polyclonal Antibody  
(Catalog: SAA544Rb18)



FITC staining on IF;  
Sample: Human HeLa cell;  
Primary Ab: 20ug/ml Rabbit Anti-Human CK18 Antibody  
Second Ab: 2µg/ml FITC-Linked Caprine Anti-Rabbit IgG Polyclonal Antibody  
(Catalog: SAA544Rb18)

FITC staining on IF;  
Sample: HeLa cell  
Primary Ab: 20µg/ml Rabbit Anti-Human CK18 Antibody  
Second Ab: 2µg/ml FITC-Linked Caprine Anti-Rabbit IgG Polyclonal Antibody  
(Catalog: SAA544Rb11)

FITC staining on IF;  
Sample: Primary Mouse Neonatal Epidermal Keratinocytes cell  
Primary Ab: 10µg/ml Rabbit Anti-Human CK18 Antibody  
Second Ab: 2µg/ml FITC-Linked Caprine Anti-Rabbit IgG Polyclonal Antibody  
(Catalog: SAA544Rb18)

**[ IMPORTANT NOTE ]**

The kit is designed for research use only, we will not be responsible for any issue if the kit was used in clinical diagnostic or any other procedures.