

PAB231Hu03

Polyclonal Antibody to Cytokeratin 18 (CK18)

Organism Species: *Homo sapiens* (Human)

Instruction manual

FOR RESEARCH USE ONLY

NOT FOR USE IN CLINICAL DIAGNOSTIC PROCEDURES

13th Edition (Revised in Aug, 2023)

[PROPERTIES]

Source: Polyclonal antibody preparation

Host: Rabbit

Purification: Antigen-specific affinity chromatography followed by Protein A affinity chromatography

Traits: Liquid

Concentration: 0.27mg/mL

UOM: 100µL

Cross Reactivity: N/A

Applications: WB; IHC; ICC; IP; FCM

[IMMUNOGEN]

Immunogen: Recombinant CK18 (Leu87~Glu385) expressed in *E.coli*

Accession No.: RPB231Hu03

[APPLICATIONS]

Western blotting: 0.01-2?g/mL;

Immunohistochemistry: 5-20?g/mL;

Immunocytochemistry: 5-20?g/mL;

Flow cytometry:20?g/mL;

Optimal working dilutions must be determined by end user.

[FORMULATION]

Form & Buffer: Supplied as solution form in PBS, pH7.4, containing 0.02% NaN₃, 50% glycerol.

[STORAGE AND STABILITY]

Storage: Avoid repeated freeze/thaw cycles.

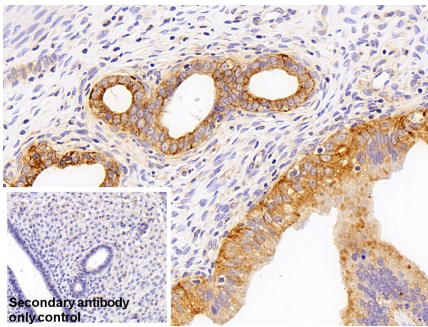
Store at 4°C for frequent use.

Aliquot and store at -20°C for 24 months.

Stability Test: The thermal stability is described by the loss rate. The loss rate was determined

by accelerated thermal degradation test, that is, incubate the protein at 37°C for 48h, and no obvious degradation and precipitation were observed. The loss rate is less than 5% within the expiration date under appropriate storage condition.

[IDENTIFICATION]



DAB staining on IHC-P;

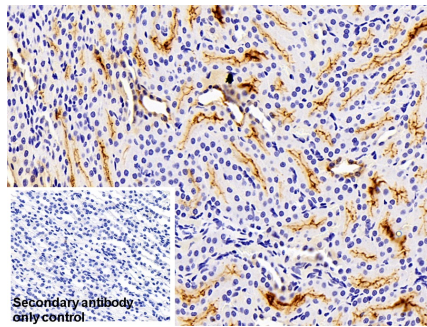
Sample: Rat Uterus Tissue

Primary Ab: 10µg/ml Rabbit Anti-Human CK18 Antibody

Control: Used PBS instead of primary antibody

Second Ab: 2?g/ml HRP-Linked Caprine Anti-Rabbit IgG Polyclonal Antibody

(Catalog: SAA544Rb19)



DAB staining on IHC-P;

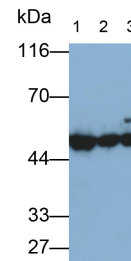
Sample: Rat Kidney Tissue

Primary Ab: 10µg/ml Rabbit Anti-Human CK18 Antibody

Control: Used PBS instead of primary antibody

Second Ab: 2?g/ml HRP-Linked Caprine Anti-Rabbit IgG Polyclonal Antibody

(Catalog: SAA544Rb19)

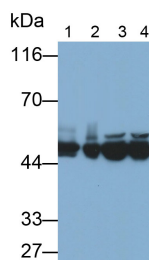


Western Blot; Samples: Lane1: HepG2 cell lysate; Lane2: Hela cell lysate;

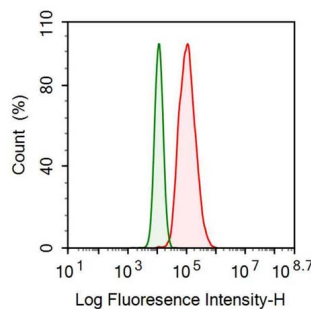
Lane3: A431 cell lysate; Primary Ab: 0.1µg/ml Rabbit Anti-Human CK18 Antibody

Second Ab: 0.2?g/ml HRP-Linked Caprine Anti-Rabbit IgG Polyclonal Antibody

(Catalog: SAA544Rb19)



Western Blot; Samples: Lane1: Human Lung lysate; Lane2: Human Placenta lysate; Lane3: HepG2 cell lysate; Lane4: Hela cell lysate; Primary Ab: 0.1µg/ml Rabbit Anti-Human CK18 Antibody



Human MCF7 cell was fixed with 2% paraformaldehyde (10 min) , permeabilised with 0.1% BSA-Triton X-100, then stained with 20µg/ml rabbit Anti-human CK18 Polyclonal Antibody (Catalog PAB231Hu03, red histogram)

Second Ab: 0.2?g/ml HRP-Linked or Isotype control antibody (Catalog
Caprine Anti-Rabbit IgG Polyclonal IS067-Rb01, green histogram), followed
Antibody by 1µg/ml FITC-conjugated Anti-rabbit
(Catalog: SAA544Rb19) IgG Secondary Antibody (Catalog
SAA544Rb18).

[IMPORTANT NOTE]

The kit is designed for research use only, we will not be responsible for any issue if the kit was used in clinical diagnostic or any other procedures.