

**PAA818Hu01**

**Polyclonal Antibody to Death receptor 5 (DR5)**

**Organism Species: *Homo sapiens (Human)***

***Instruction manual***

FOR RESEARCH USE ONLY

NOT FOR USE IN CLINICAL DIAGNOSTIC PROCEDURES

---

13th Edition (Revised in Aug, 2023)

**[ PROPERTIES ]**

**Source:** Polyclonal antibody preparation

**Host:** Rabbit

**Purification:** Antigen-specific affinity chromatography followed by Protein A affinity chromatography

**Traits:** Liquid

**Concentration:** 0.5mg/ml

**UOM:** 100µl

**Cross Reactivity:** N/A

**Applications:** WB,IHC,ICC/IF

**[ IMMUNOGEN ]**

**Immunogen:** Recombinant DR5 (Ser234~Ala435) expressed in *E.coli*

**Accession No.:** RPA818Hu01

**[ APPLICATIONS ]**

Western blotting: 0.01-2µg/mL;

Immunohistochemistry: 5-20µg/mL;

Immunocytochemistry: 5-20µg/mL;

Optimal working dilutions must be determined by end user.

**[ FORMULATION ]**

**Form & Buffer:** Supplied as solution form in 0.01M PBS, pH7.4, containing 0.05% Proclin-300, 50% glycerol.

**[ STORAGE AND STABILITY ]**

**Storage:** Avoid repeated freeze/thaw cycles.

Store at 4°C for frequent use.

Aliquot and store at -20°C for 24 months.

**Stability Test:** The thermal stability is described by the loss rate. The loss rate was determined by accelerated thermal degradation test, that is, incubate the protein at 37°C for 48h, and no

obvious degradation and precipitation were observed. The loss rate is less than 5% within the expiration date under appropriate storage condition.

**[ IDENTIFICATION ]**

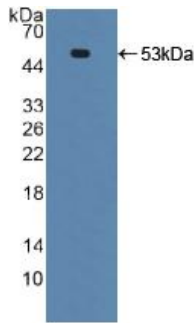
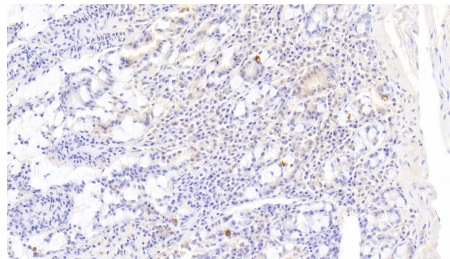
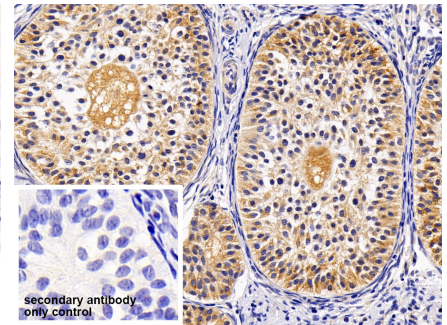


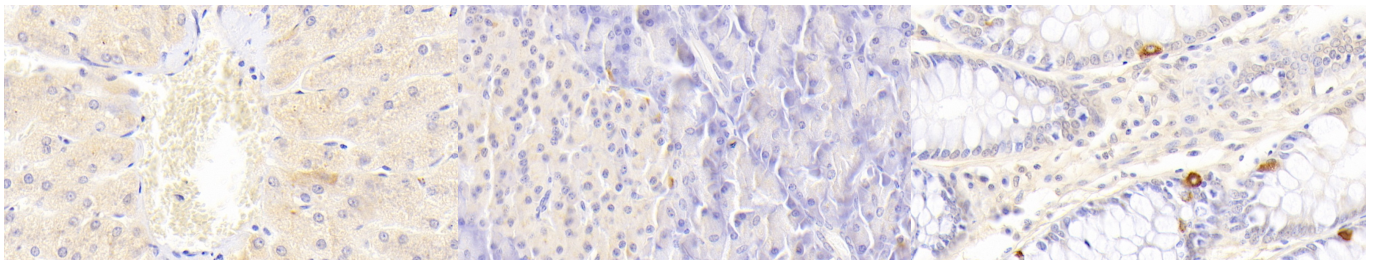
Figure. Western Blot; Sample: Recombinant TNFRSF10B, Human.



DAB staining on IHC-P; Samples: Human Small intestine Tissue; Primary Ab: 20µg/ml Rabbit Anti-Human TNFRSF10B Antibody Second Ab: 2µg/mL HRP-Linked Caprine Anti-Rabbit IgG Polyclonal Antibody (Catalog: SAA544Rb19)



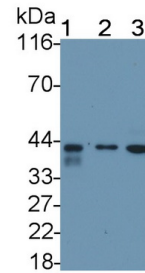
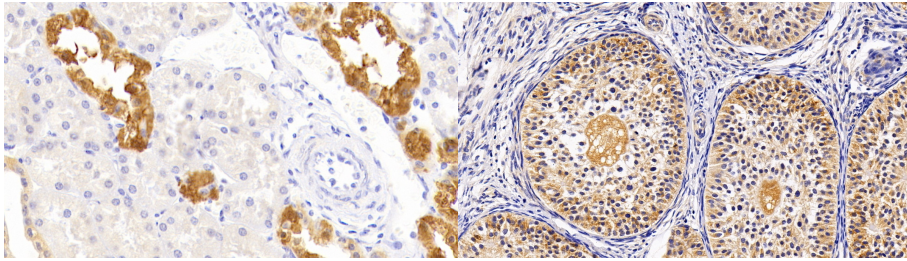
DAB staining on IHC-P; Sample: Human Ovary Tissue Primary Ab: 20µg/ml Rabbit Anti-Human DR5 Antibody Control: Used PBS instead of primary antibody Second Ab: 2µg/ml HRP-Linked Caprine Anti-Rabbit IgG Polyclonal Antibody (Catalog: SAA544Rb19)



DAB staining on IHC-P; Samples: Human Liver Tissue; Primary Ab: 20µg/ml Rabbit Anti-Human TNFRSF10B Antibody Second Ab: 2µg/mL HRP-Linked Caprine Anti-Rabbit IgG Polyclonal Antibody (Catalog: SAA544Rb19)

DAB staining on IHC-P; Samples: Human Pancreas Tissue; Primary Ab: 20µg/ml Rabbit Anti-Human TNFRSF10B Antibody Second Ab: 2µg/mL HRP-Linked Caprine Anti-Rabbit IgG Polyclonal Antibody (Catalog: SAA544Rb19)

DAB staining on IHC-P; Samples: Human Colon Tissue; Primary Ab: 20µg/ml Rabbit Anti-Human TNFRSF10B Antibody Second Ab: 2µg/mL HRP-Linked Caprine Anti-Rabbit IgG Polyclonal Antibody (Catalog: SAA544Rb19)



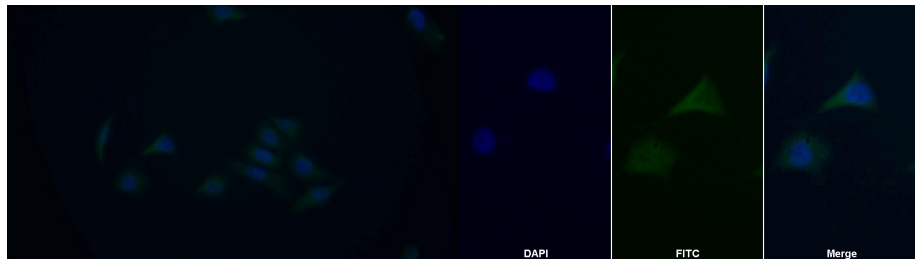
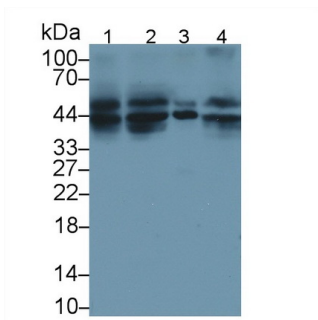
DAB staining on IHC-P;

Samples: Human Kidney Tissue;  
 Primary Ab: 20µg/ml Rabbit Anti-Human TNFRSF10B Antibody  
 Second Ab: 2µg/mL HRP-Linked Caprine Anti-Rabbit IgG Polyclonal Antibody  
 (Catalog: SAA544Rb19)

DAB staining on IHC-P;

Sample: Human Ovary Tissue;  
 Primary Ab: 20µg/ml Rabbit Anti-Human TNFRSF10B Antibody  
 Second Ab: 2µg/mL HRP-Linked Caprine Anti-Rabbit IgG Polyclonal Antibody  
 (Catalog: SAA544Rb19)

Western Blot; Sample: Lane1: A549 cell lysate; Lane2: K562 cell lysate; Lane3: SW480 cell lysate  
 Primary Ab: 0.2µg/ml Rabbit Anti-Human DR5 Antibody  
 Second Ab: 0.2µg/mL HRP-Linked Caprine Anti-Rabbit IgG Polyclonal Antibody  
 (Catalog: SAA544Rb19)



FITC staining on IF;

FITC staining on IF;

Western Blot; Sample: Lane1: Human PC3 cell lysate; Lane2: Human HepG2 cell lysate; Lane3: Human K562 cell lysate; Lane4: Human SW480 cell lysate  
 Primary Ab: 2µg/ml Rabbit Anti-Human DR5 Ab  
 Second Ab: 0.2µg/ml HRP-Linked Caprine Anti-Rabbit IgG Polyclonal Antibody  
 (Catalog: SAA544Rb19)

Samples: Human HepG2 cell;  
 Primary Ab: 20µg/ml Rabbit Anti-Human TNFRSF10B Antibody  
 Second Ab: 1.5µg/ml FITC-Linked Caprine Anti-Rabbit IgG Polyclonal Antibody  
 (Catalog: SAA544Rb18)

Sample: HepG2 cell  
 Primary Ab: 20µg/ml Rabbit Anti-Human DR5 Antibody  
 Second Ab: 2µg/ml FITC-Linked Caprine Anti-Rabbit IgG Polyclonal Antibody  
 (Catalog: SAA544Rb11)

**[ IMPORTANT NOTE ]**

The kit is designed for research use only, we will not be responsible for any issue if the kit was used in clinical diagnostic or any other procedures.