

**PAB373Bo01**

**Polyclonal Antibody to Defensin Beta 1 (DEFb1)**

**Organism Species: *Bos taurus*; Bovine (Cattle)**

***Instruction manual***

FOR RESEARCH USE ONLY

NOT FOR USE IN CLINICAL DIAGNOSTIC PROCEDURES

---

13th Edition (Revised in Aug, 2023)

### [ **PROPERTIES** ]

**Source:** Polyclonal antibody preparation

**Host:** Rabbit

**Purification:** Antigen-specific affinity chromatography followed by Protein A affinity chromatography

**Traits:** Liquid

**Concentration:** 0.5mg/mL

**UOM:** 50µL

**Cross Reactivity:** Porcine

**Applications:** WB; IHC; ICC; IP.

### [ **IMMUNOGEN** ]

**Immunogen:** Recombinant DEFb1 (Asp1~Trp38) expressed in *E.coli*

**Accession No.:** RPB373Bo01

### [ **APPLICATIONS** ]

Western blotting: 0.01-2µg/mL;

Immunohistochemistry: 5-20µg/mL;

Immunofluorescence:5-20µg/mL;

Optimal working dilutions must be determined by end user.

### [ **FORMULATION** ]

**Form & Buffer:** Supplied as solution form in 0.01M PBS, pH7.4, containing 0.05% Proclin-300, 50% glycerol.

### [ **STORAGE AND STABILITY** ]

**Storage:** Avoid repeated freeze/thaw cycles.

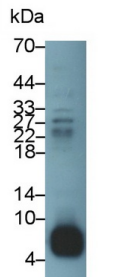
Store at 4°C for frequent use.

Aliquot and store at -20°C for 24 months.

**Stability Test:** The thermal stability is described by the loss rate. The loss rate was determined by accelerated thermal degradation test, that is, incubate the protein at 37°C for 48h, and no

obvious degradation and precipitation were observed. The loss rate is less than 5% within the expiration date under appropriate storage condition.

### **[ IDENTIFICATION ]**



Western Blot; Sample: Porcine Trachea  
lysate; Primary Ab: 0.2 $\mu$ g/ml Rabbit Anti-  
Bovine DEFb1 Antibody Second Ab:  
0.2 $\mu$ g/mL HRP-Linked Caprine Anti-  
Rabbit IgG Polyclonal Antibody  
(Catalog: SAA544Rb19)

### **[ IMPORTANT NOTE ]**

The kit is designed for research use only, we will not be responsible for any issue if the kit was used in clinical diagnostic or any other procedures.