

PAC453Hu01

Polyclonal Antibody to Eukaryotic Translation Elongation Factor 2 (EEF2)

Organism Species: *Homo sapiens (Human)*

Instruction manual

FOR RESEARCH USE ONLY

NOT FOR USE IN CLINICAL DIAGNOSTIC PROCEDURES

13th Edition (Revised in Aug, 2023)

[PROPERTIES]

Source: Polyclonal antibody preparation

Host: Rabbit

Purification: Antigen-specific affinity chromatography followed by Protein A affinity chromatography

Traits: Liquid

Concentration: 0.5mg/ml

UOM: 100µl

Cross Reactivity: Mouse;Rat

Applications: WB; IHC; IF;FCM

[IMMUNOGEN]

Immunogen: Recombinant EEF2 (Lys32~Val233) expressed in *E.coli*

Accession No.: RPC453Hu01

[APPLICATIONS]

Western blotting: 0.01-2µg/mL;

Immunohistochemistry: 5-20µg/mL;

Immunocytochemistry: 5-20µg/mL;

Optimal working dilutions must be determined by end user.

[FORMULATION]

Form & Buffer: Supplied as solution form in PBS, pH7.4, containing 0.02% NaN₃, 50% glycerol.

[STORAGE AND STABILITY]

Storage: Avoid repeated freeze/thaw cycles.

Store at 4°C for frequent use.

Aliquot and store at -20°C for 24 months.

Stability Test: The thermal stability is described by the loss rate. The loss rate was determined by accelerated thermal degradation test, that is, incubate the protein at 37°C for 48h, and no

obvious degradation and precipitation were observed. The loss rate is less than 5% within the expiration date under appropriate storage condition.

[IDENTIFICATION]

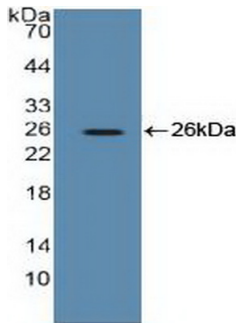
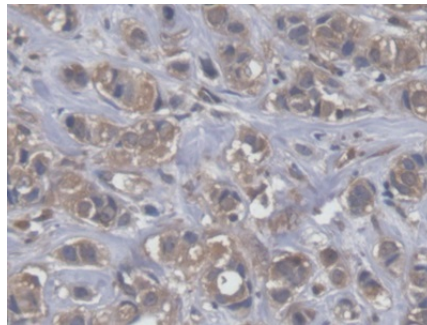
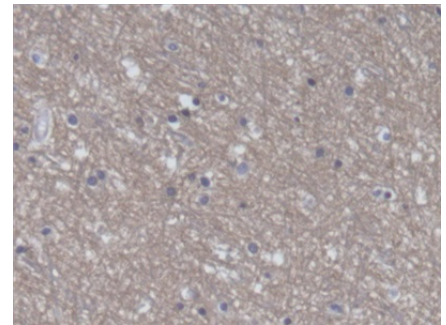


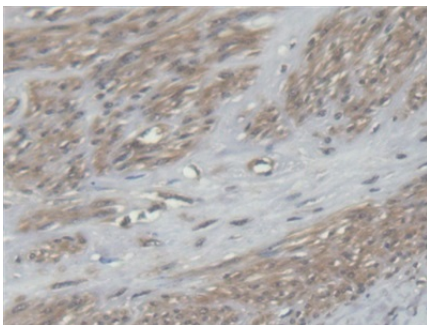
Figure. Western Blot; Sample: Recombinant EEF2, Human.



DAB staining on IHC-P;
 Samples: Human Breast cancer Tissue;
 Primary Ab: 20µg/ml Rabbit Anti-Human EEF2 Antibody
 Second Ab: 2µg/mL HRP-Linked Caprine Anti-Rabbit IgG Polyclonal Antibody
 (Catalog: SAA544Rb19)



DAB staining on IHC-P;
 Samples: Human Cerebrum Tissue;
 Primary Ab: 20µg/ml Rabbit Anti-Human EEF2 Antibody
 Second Ab: 2µg/mL HRP-Linked Caprine Anti-Rabbit IgG Polyclonal Antibody
 (Catalog: SAA544Rb19)



DAB staining on IHC-P;
 Samples: Human Uterine fibroids Tissue;
 Primary Ab: 20µg/ml Rabbit Anti-Human EEF2 Antibody
 Second Ab: 2µg/mL HRP-Linked Caprine Anti-Rabbit IgG Polyclonal Antibody
 (Catalog: SAA544Rb19)

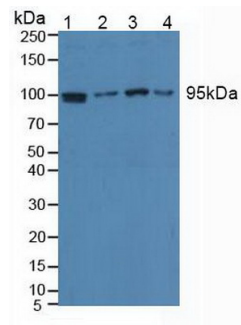
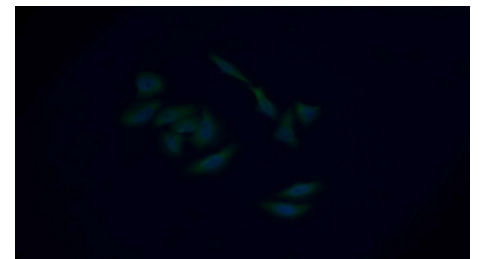
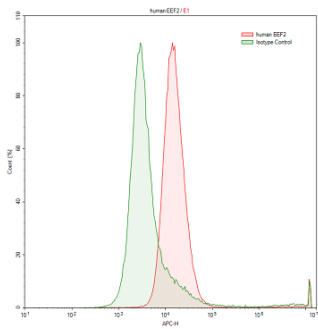


Figure. Western Blot; Sample: Lane1: Human HeLa Cells; Lane2: Human Jurkat Cells; Lane3: Human HepG2 Cells; Lane4: Human Raji Cells.



FITC staining on IF;
 Samples: Human HepG2 cell;
 Primary Ab: 20µg/ml Rabbit Anti-Human EEF2 Antibody
 Second Ab: 1.5µg/ml FITC-Linked Caprine Anti-Rabbit IgG Polyclonal Antibody
 (Catalog: SAA544Rb18)



Raji human Burkitt's Lymphoma cell line was stained with rabbit Anti-human EEF2 Polyclonal Antibody (Catalog # PAC453Hu01, filled red histogram) or Isotype control antibody (Catalog # IS067-Rb01, filled green histogram), followed by APC-conjugated Anti-rabbit IgG Secondary Antibody (Catalog # SAA544Rb15). Cells were fixed with 4% paraformaldehyde and permeabilized with 0.1% Triton X-100.

[**IMPORTANT NOTE**]

The kit is designed for research use only, we will not be responsible for any issue if the kit was used in clinical diagnostic or any other procedures.