

PAC258Hu01

Polyclonal Antibody to Exportin 1 (XPO1)

Organism Species: *Homo sapiens (Human)*

Instruction manual

FOR RESEARCH USE ONLY

NOT FOR USE IN CLINICAL DIAGNOSTIC PROCEDURES

13th Edition (Revised in Aug, 2023)

[PROPERTIES]

Source: Polyclonal antibody preparation

Host: Rabbit

Purification: Antigen-specific affinity chromatography followed by Protein A affinity chromatography

Traits: Liquid

Concentration: 0.5mg/mL

UOM: 100µl

Cross Reactivity: Porcine

Applications: WB,IHC; FCM

[IMMUNOGEN]

Immunogen: Recombinant XPO1 (Thr917~Asp1071) expressed in *E.coli*

Accession No.: RPC258Hu01

[APPLICATIONS]

Western blotting: 0.01-2µg/mL;

Immunohistochemistry: 5-20µg/mL;

Flow cytometry:20µg/ml;

Optimal working dilutions must be determined by end user.

[FORMULATION]

Form & Buffer: Supplied as solution form in 0.01M PBS, pH7.4, containing 0.05% Proclin-300, 50% glycerol.

[STORAGE AND STABILITY]

Storage: Avoid repeated freeze/thaw cycles.

Store at 4°C for frequent use.

Aliquot and store at -20°C for 24 months.

Stability Test: The thermal stability is described by the loss rate. The loss rate was determined

by accelerated thermal degradation test, that is, incubate the protein at 37°C for 48h, and no obvious degradation and precipitation were observed. The loss rate is less than 5% within the expiration date under appropriate storage condition.

[IDENTIFICATION]

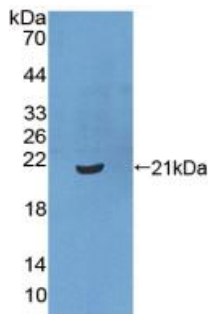
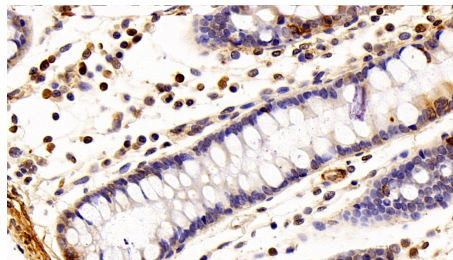
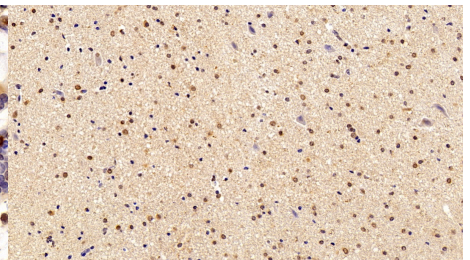


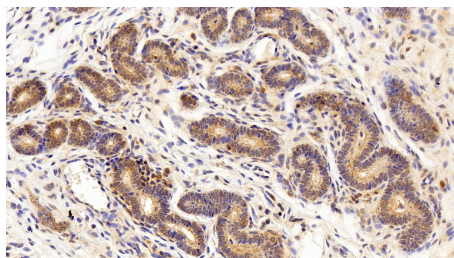
Figure. Western Blot; Sample: Recombinant XPo1, Human.



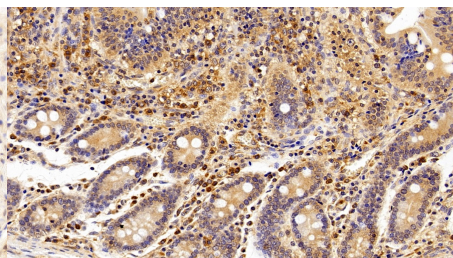
DAB staining on IHC-P; Sample: Human Colon Tissue; Primary Ab: 20µg/ml Rabbit Anti-Human XPo1 Antibody Second Ab: 2µg/mL HRP-Linked Caprine Anti-Rabbit IgG Polyclonal Antibody (Catalog: SAA544Rb19)



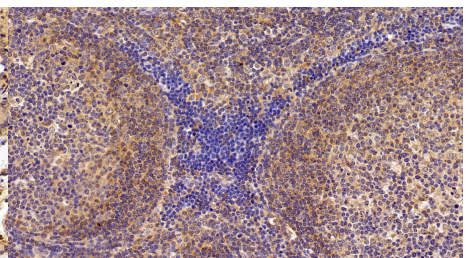
DAB staining on IHC-P; Sample: Human Cerebrum Tissue; Primary Ab: 20µg/ml Rabbit Anti-Human XPo1 Antibody Second Ab: 2µg/mL HRP-Linked Caprine Anti-Rabbit IgG Polyclonal Antibody (Catalog: SAA544Rb19)



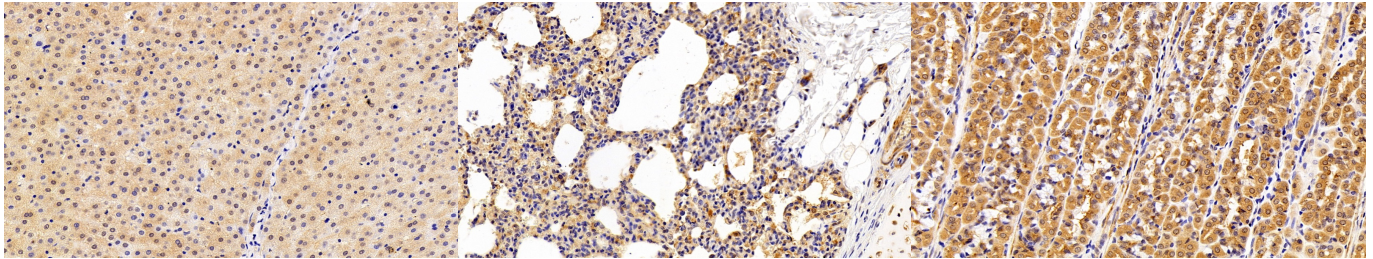
DAB staining on IHC-P; Sample: Human Uterus Tissue; Primary Ab: 20µg/ml Rabbit Anti-Human XPo1 Antibody Second Ab: 2µg/mL HRP-Linked Caprine Anti-Rabbit IgG Polyclonal Antibody (Catalog: SAA544Rb19)



DAB staining on IHC-P; Sample: Human Small intestine Tissue; Primary Ab: 20µg/ml Rabbit Anti-Human XPo1 Antibody Second Ab: 2µg/mL HRP-Linked Caprine Anti-Rabbit IgG Polyclonal Antibody (Catalog: SAA544Rb19)



DAB staining on IHC-P; Sample: Human Lymph node Tissue; Primary Ab: 20µg/ml Rabbit Anti-Human XPo1 Antibody Second Ab: 2µg/mL HRP-Linked Caprine Anti-Rabbit IgG Polyclonal Antibody (Catalog: SAA544Rb19)



DAB staining on IHC-P;

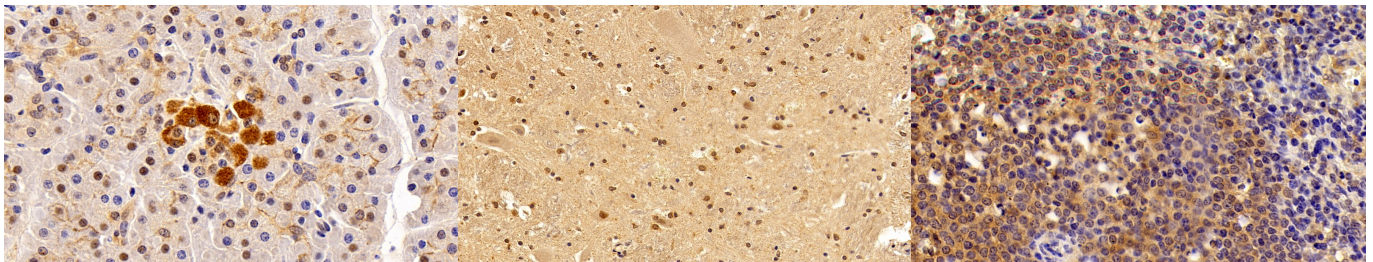
Sample: Human Liver Tissue;
 Primary Ab: 20µg/ml Rabbit Anti-Human XPo1 Antibody
 Second Ab: 2µg/mL HRP-Linked Caprine Anti-Rabbit IgG Polyclonal Antibody
 (Catalog: SAA544Rb19)

DAB staining on IHC-P;

Sample: Human Lung Tissue;
 Primary Ab: 20µg/ml Rabbit Anti-Human XPo1 Antibody
 Second Ab: 2µg/mL HRP-Linked Caprine Anti-Rabbit IgG Polyclonal Antibody
 (Catalog: SAA544Rb19)

DAB staining on IHC-P;

Sample: Human Stomach Tissue;
 Primary Ab: 20µg/ml Rabbit Anti-Human XPo1 Antibody
 Second Ab: 2µg/mL HRP-Linked Caprine Anti-Rabbit IgG Polyclonal Antibody
 (Catalog: SAA544Rb19)



DAB staining on IHC-P;

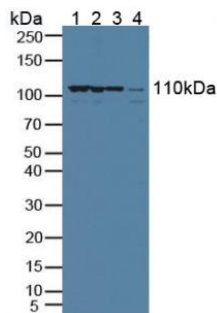
Sample: Human Pancreas Tissue;
 Primary Ab: 20µg/ml Rabbit Anti-Human XPo1 Antibody
 Second Ab: 2µg/mL HRP-Linked Caprine Anti-Rabbit IgG Polyclonal Antibody
 (Catalog: SAA544Rb19)

DAB staining on IHC-P;

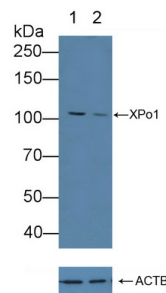
Sample: Human Spinal cord Tissue;
 Primary Ab: 20µg/ml Rabbit Anti-Human XPo1 Antibody
 Second Ab: 2µg/mL HRP-Linked Caprine Anti-Rabbit IgG Polyclonal Antibody
 (Catalog: SAA544Rb19)

DAB staining on IHC-P;

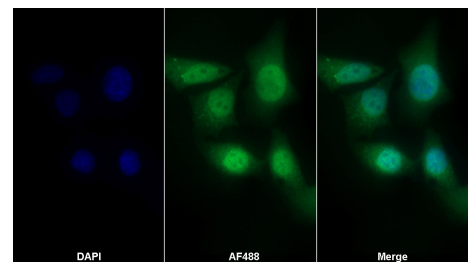
Sample: Human Spleen Tissue;
 Primary Ab: 20µg/ml Rabbit Anti-Human XPo1 Antibody
 Second Ab: 2µg/mL HRP-Linked Caprine Anti-Rabbit IgG Polyclonal Antibody
 (Catalog: SAA544Rb19)



Western Blot; Sample: Lane1: HeLa cell



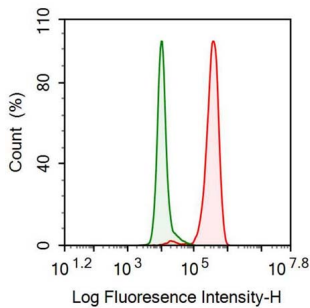
Knockout Varification:



AF488 staining on IF;

Sample: HeLa cell

lysate; Lane2: K562 cell lysate; Lane3: Human Lung lysate; Lane4: Porcine Small intestine lysate	Lane 1: Wild-type Hela cell lysate; Lane 2: XPo1 knockout Hela cell lysate;	Primary Ab: 20µg/ml Rabbit Anti-Human XPo1 Antibody
Primary Ab: 1µg/ml Rabbit Anti-Human XPo1 Antibody	Predicted MW: 123kd Observed MW: 110kd	Second Ab: 2µg/ml AF488-Linked Caprine Anti-Rabbit IgG Polyclonal Antibody
Second Ab: 0.2µg/mL HRP-Linked Caprine Anti-Rabbit IgG Polyclonal Antibody (Catalog: SAA544Rb19)	Primary Ab: 1µg/ml Rabbit Anti-Human XPO1 Antibody	(Catalog: SAA544Rb11)
	Second Ab: 0.2µg/mL HRP-Linked Caprine Anti-Rabbit IgG Polyclonal Antibody (Catalog: SAA544Rb19)	



Human K562 cell was fixed with 2% paraformaldehyde (10 min) , permeabilised with 0.2% BSA-Triton X-100, then stained with 20µg/ml rabbit Anti-human XPo1 Polyclonal Antibody (Catalog PAC664Hu02, red histogram) or Isotype control antibody (Catalog IS067-Rb01, green histogram), followed by 1µg/ml FITC-conjugated Anti-rabbit IgG Secondary Antibody (Catalog SAA544Rb18).

[IMPORTANT NOTE]

The kit is designed for research use only, we will not be responsible for any issue if the kit was used in clinical diagnostic or any other procedures.