

PAA930Mu01

Polyclonal Antibody to Extracellular Signal Regulated Kinase 2 (ERK2)

Organism Species: *Mus musculus* (Mouse)

Instruction manual

FOR RESEARCH USE ONLY

NOT FOR USE IN CLINICAL DIAGNOSTIC PROCEDURES

13th Edition (Revised in Aug, 2023)

[PROPERTIES]

Source: Polyclonal antibody preparation

Host: Rabbit

Purification: Antigen-specific affinity chromatography followed by Protein A affinity chromatography

Traits: Liquid

Concentration: 0.5mg/mL

UOM: 100µL

Cross Reactivity: Human;Rat;Cavia;Canine;Porcine;Bovine;Gallus.

Applications: WB; IHC; ICC; IP.

[IMMUNOGEN]

Immunogen: Recombinant ERK2 (Tyr25~Ser360) expressed in E.coli.

Accession No.: RPA930Hu02

[APPLICATIONS]

Western blotting: 0.01-2µg/mL;

Immunohistochemistry: 5-20µg/mL;

Immunocytochemistry: 5-20µg/mL;

Optimal working dilutions must be determined by end user.

[FORMULATION]

Form & Buffer: Supplied as solution form in PBS, pH7.4, containing 0.02% NaN₃, 50% glycerol.

[STORAGE AND STABILITY]

Storage: Avoid repeated freeze/thaw cycles.

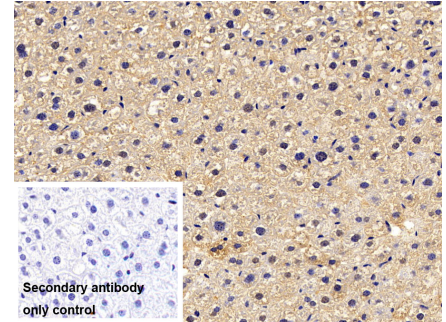
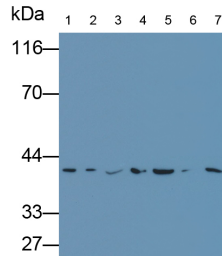
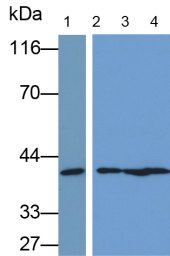
Store at 4°C for frequent use.

Aliquot and store at -20°C for 24 months.

Stability Test: The thermal stability is described by the loss rate. The loss rate was determined by accelerated thermal degradation test, that is, incubate the protein at 37°C for 48h, and no

obvious degradation and precipitation were observed. The loss rate is less than 5% within the expiration date under appropriate storage condition.

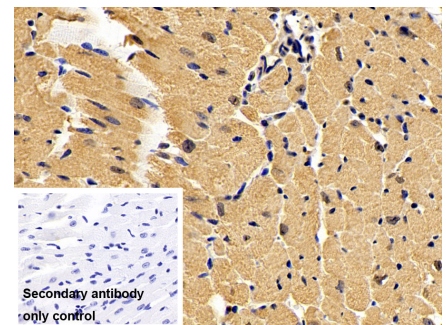
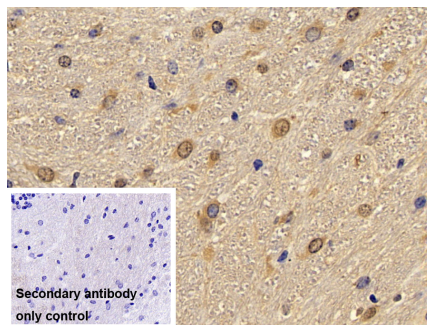
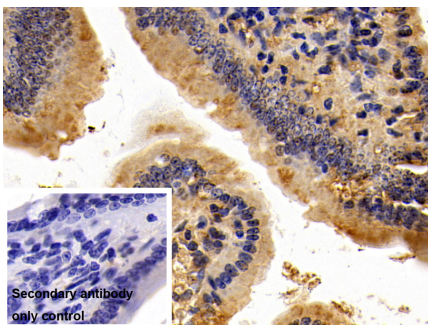
[IDENTIFICATION]



Western Blot; Samples: Lane1: HeLa cell lysate; Lane2: Porcine Cerebrium lysate; Lane3: Rat Cerebrium lysate; Lane4: Mouse Cerebrium lysate; Primary Ab: 0.1µg/ml Rabbit Anti-Mouse ERK2 Antibody Second Ab: 0.2?g/ml HRP-Linked Caprine Anti-Rabbit IgG Polyclonal Antibody (Catalog: SAA544Rb19)

Western Blot; Samples: Lane1: Porcine Cerebrium lysate; Lane2: Rat Cerebrium lysate; Lane3: Mouse Cerebrium lysate; Lane4: Canine Cerebrium lysate; Lane5: Gallus Cerebrium lysate; Lane6: Bovine Cerebrium lysate; Lane7: Cavia Cerebrium lysate; Primary Ab: 0.005µg/ml Rabbit Anti-Mouse ERK2 Antibody Second Ab: 0.2?g/ml HRP-Linked Caprine Anti-Rabbit IgG Polyclonal Antibody (Catalog: SAA544Rb19)

DAB staining on IHC-P; Sample: Mouse Liver Tissue Primary Ab: 10µg/ml Rabbit Anti-Mouse ERK2 Antibody Control: Used PBS instead of primary antibody Second Ab: 2?g/ml HRP-Linked Caprine Anti-Rabbit IgG Polyclonal Antibody (Catalog: SAA544Rb19)



DAB staining on IHC-P; Sample: Mouse Small intestine Tissue Primary Ab: 10µg/ml Rabbit Anti-Mouse ERK2 Antibody

DAB staining on IHC-P; Sample: Mouse Cerebellum Tissue Primary Ab: 10µg/ml Rabbit Anti-Mouse ERK2 Antibody

DAB staining on IHC-P; Sample: Mouse Cardiac Muscle Tissue Primary Ab: 10µg/ml Rabbit Anti-Mouse ERK2 Antibody

Control: Used PBS instead of primary antibody	Control: Used PBS instead of primary antibody	Control: Used PBS instead of primary antibody
Second Ab: 2?g/ml HRP-Linked	Second Ab: 2?g/ml HRP-Linked	Second Ab: 2?g/ml HRP-Linked
Caprine Anti-Rabbit IgG Polyclonal Antibody	Caprine Anti-Rabbit IgG Polyclonal Antibody	Caprine Anti-Rabbit IgG Polyclonal Antibody
(Catalog: SAA544Rb19)	(Catalog: SAA544Rb19)	(Catalog: SAA544Rb19)

[IMPORTANT NOTE]

The kit is designed for research use only, we will not be responsible for any issue if the kit was used in clinical diagnostic or any other procedures.