

**PAA193Po05**

**Polyclonal Antibody to Fibrinogen (FG)**

**Organism Species: *Sus scrofa*; *Porcine* (Pig)**

***Instruction manual***

FOR RESEARCH USE ONLY

NOT FOR USE IN CLINICAL DIAGNOSTIC PROCEDURES

---

13th Edition (Revised in Aug, 2023)

**[ PROPERTIES ]**

**Source:** Polyclonal antibody preparation

**Host:** Rabbit

**Purification:** Antigen-specific affinity chromatography followed by Protein A affinity chromatography

**Traits:** Liquid

**Concentration:** 0.5mg/mL

**UOM:** 100µl

**Cross Reactivity:** Porcine

**Applications:** IHC

**[ IMMUNOGEN ]**

**Immunogen:** Recombinant Fibrinogen ( ) expressed in

**Accession No.:** NPA193Po01

**[ APPLICATIONS ]**

Immunohistochemistry: 5-20µg/mL;

Optimal working dilutions must be determined by end user.

**[ FORMULATION ]**

**Form & Buffer:** Supplied as solution form in 0.01M PBS, pH7.4, containing 0.05% Proclin-300, 50% glycerol.

**[ STORAGE AND STABILITY ]**

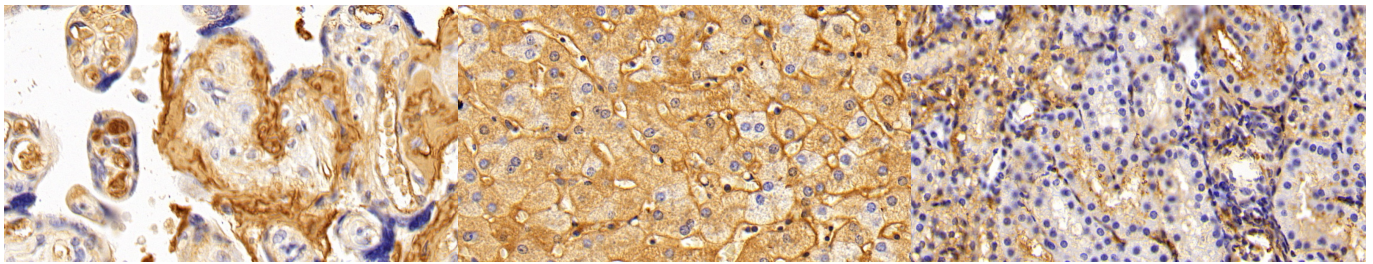
**Storage:** Avoid repeated freeze/thaw cycles.

Store at 4°C for frequent use.

Aliquot and store at -20°C for 24 months.

**Stability Test:** The thermal stability is described by the loss rate. The loss rate was determined by accelerated thermal degradation test, that is, incubate the protein at 37°C for 48h, and no obvious degradation and precipitation were observed. The loss rate is less than 5% within the expiration date under appropriate storage condition.

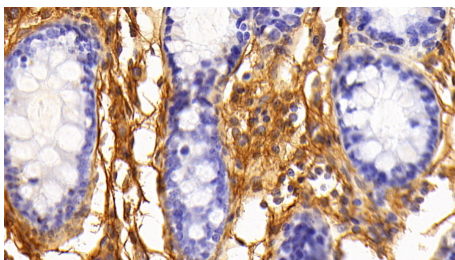
**[ IDENTIFICATION ]**



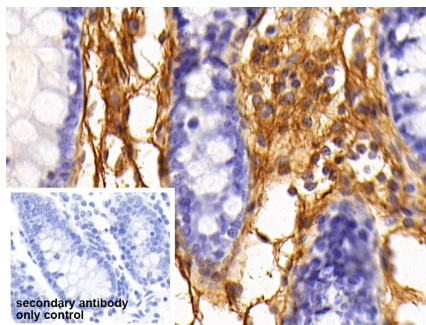
DAB staining on IHC-P; Samples:  
Human Placenta Tissue; Primary Ab:  
10µg/ml Rabbit Anti-Porcine FG  
Antibody Second Ab: 2µg/mL HRP-  
Linked Caprine Anti-Rabbit IgG  
Polyclonal Antibody (Catalog:  
SAA544Rb19)

DAB staining on IHC-P;  
Samples: Porcine Liver Tissue;  
Primary Ab: 10µg/ml Rabbit Anti-  
Porcine FG Antibody  
Second Ab: 2µg/mL HRP-Linked  
Caprine Anti-Rabbit IgG Polyclonal  
Antibody  
(Catalog: SAA544Rb19)

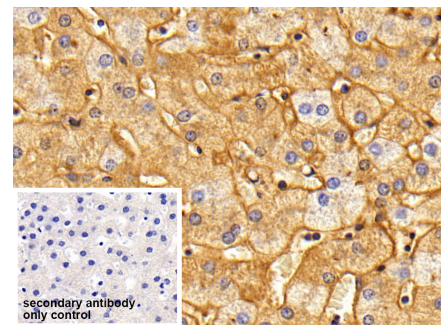
DAB staining on IHC-P;  
Samples: Porcine Kidney Tissue;  
Primary Ab: 10µg/ml Rabbit Anti-  
Porcine FG Antibody  
Second Ab: 2µg/mL HRP-Linked  
Caprine Anti-Rabbit IgG Polyclonal  
Antibody  
(Catalog: SAA544Rb19)



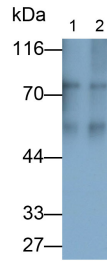
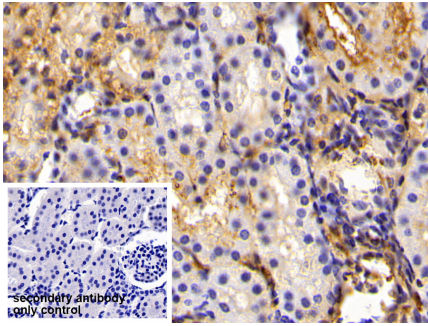
DAB staining on IHC-P;  
Samples: Porcine Colon Tissue;  
Primary Ab: 10µg/ml Rabbit Anti-  
Porcine FG Antibody  
Second Ab: 2µg/mL HRP-Linked  
Caprine Anti-Rabbit IgG Polyclonal  
Antibody  
(Catalog: SAA544Rb19)



DAB staining on IHC-P;  
Sample: Porcine Colon Tissue  
Primary Ab: 10µg/ml Rabbit Anti-  
Porcine FG Antibody  
Control: Used PBS instead of primary  
antibody  
Second Ab: 2µg/ml HRP-Linked  
Caprine Anti-Rabbit IgG Polyclonal  
Antibody  
(Catalog: SAA544Rb19)



DAB staining on IHC-P;  
Sample: Porcine Liver Tissue  
Primary Ab: 10µg/ml Rabbit Anti-  
Porcine FG Antibody  
Control: Used PBS instead of primary  
antibody  
Second Ab: 2µg/ml HRP-Linked  
Caprine Anti-Rabbit IgG Polyclonal  
Antibody  
(Catalog: SAA544Rb19)



DAB staining on IHC-P;  
Sample: Porcine Kidney Tissue  
Primary Ab: 10µg/ml Rabbit Anti-Porcine FG Antibody  
Control: Used PBS instead of primary antibody  
Second Ab: 2µg/ml HRP-Linked Caprine Anti-Rabbit IgG Polyclonal Antibody  
(Catalog: SAA544Rb19)

Western Blot; Samples: Lane1: Porcine Liver lysate; Lane2: Porcine Kidney lysate;  
Primary Ab: 0.01µg/ml Rabbit Anti-Porcine FG Antibody  
Second Ab: 0.2µg/ml HRP-Linked Caprine Anti-Rabbit IgG Polyclonal Antibody  
(Catalog: SAA544Rb19)

**[ IMPORTANT NOTE ]**

The kit is designed for research use only, we will not be responsible for any issue if the kit was used in clinical diagnostic or any other procedures.