

**PAA037Hu02**

**Polyclonal Antibody to Fibronectin (FN)**

**Organism Species: *Homo sapiens (Human)***

***Instruction manual***

FOR RESEARCH USE ONLY

NOT FOR USE IN CLINICAL DIAGNOSTIC PROCEDURES

---

13th Edition (Revised in Aug, 2023)

**[ PROPERTIES ]**

**Source:** Polyclonal antibody preparation

**Host:** Rabbit

**Purification:** Antigen-specific affinity chromatography followed by Protein A affinity chromatography

**Traits:** Liquid

**Concentration:** 0.15mg/mL

**UOM:** 200µL

**Cross Reactivity:** Mouse;Rat

**Applications:** WB; IHC; ICC; IP; FCM

**[ IMMUNOGEN ]**

**Immunogen:** Recombinant Fibronectin (Ser1998~Ser2106) expressed in *E.coli*

**Accession No.:** RPA037Hu02

**[ APPLICATIONS ]**

Western blotting: 0.01-2?g/mL

Immunohistochemistry: 5-20?g/mL

Immunocytochemistry: 5-20?g/mL

Flow cytometry:20?g/ml;

Optimal working dilutions must be determined by end user.

**[ FORMULATION ]**

**Form & Buffer:** Supplied as solution form in PBS, pH7.4, containing 0.02% NaN<sub>3</sub>, 50% glycerol.

**[ STORAGE AND STABILITY ]**

**Storage:** Avoid repeated freeze/thaw cycles.

Store at 4°C for frequent use.

Aliquot and store at -20°C for 24 months.

**Stability Test:** The thermal stability is described by the loss rate. The loss rate was determined by accelerated thermal degradation test, that is, incubate the protein at 37°C for 48h, and no obvious degradation and precipitation were observed. The loss rate is less than 5% within the expiration date under appropriate storage condition.

**[ IDENTIFICATION ]**

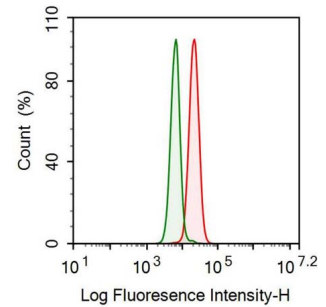
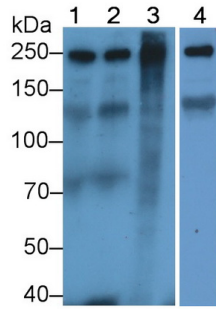
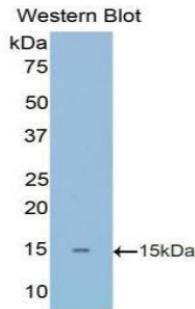


Figure. Western Blot; Sample: Recombinant FN, Human.

Western Blot; Sample: Lane1: Human Serum; Lane2: Human Plasma; Lane3: Human Placenta lysate; Lane4: Mouse Serum

Primary Ab: 2?g/ml Rabbit Anti-Human FN Antibody

Second Ab: 0.2µg/mL HRP-Linked Caprine Anti-Rabbit IgG Polyclonal Antibody (Catalog: SAA544Rb19)

Human SiHa cell was fixed with 2% paraformaldehyde (10 min) , permeabilised with 0.1% BSA-Triton X-100, then stained with 20µg/ml rabbit Anti-human FN Polyclonal Antibody (Catalog PAA037Hu02, red histogram) or Isotype control antibody (Catalog IS067-Rb01, green histogram), followed by 1µg/ml FITC-conjugated Anti-rabbit IgG Secondary Antibody (Catalog SAA544Rb18).

**[ IMPORTANT NOTE ]**

The kit is designed for research use only, we will not be responsible for any issue if the kit was used in clinical diagnostic or any other procedures.