

**PAA786Mu01**

**Polyclonal Antibody to Ficolin 1 (FCN1)**

**Organism Species: *Mus musculus* (Mouse)**

***Instruction manual***

FOR RESEARCH USE ONLY

NOT FOR USE IN CLINICAL DIAGNOSTIC PROCEDURES

---

13th Edition (Revised in Aug, 2023)

**[ PROPERTIES ]**

**Source:** Polyclonal antibody preparation

**Host:** Rabbit

**Purification:** Antigen-specific affinity chromatography followed by Protein A affinity chromatography

**Traits:** Liquid

**Concentration:** 0.5mg/mL

**UOM:** 100µL

**Cross Reactivity:** N/A

**Applications:** WB; IHC; ICC; IP.

**[ IMMUNOGEN ]**

**Immunogen:** Recombinant FCN1 (Arg25~Gly317) expressed in *E.coli*

**Accession No.:** RPA786Mu01

**[ APPLICATIONS ]**

Western blotting: 0.01-2µg/mL;

Immunohistochemistry: 5-20µg/mL;

Immunocytochemistry: 5-20µg/mL;

Optimal working dilutions must be determined by end user.

**[ FORMULATION ]**

**Form & Buffer:** Supplied as solution form in 0.01M PBS, pH7.4, containing 0.05% Proclin-300, 50% glycerol.

**[ QUALITY CONTROL ]**

**Content:** The quality control contains recombinant FCN1 disposed in loading buffer.

**Usage:** 10uL per well when 3,3'-Diaminobenzidine(DAB) as the substrate.

5uL per well when used in enhanced chemiluminescent (ECL).

**Note:** The quality control is specifically manufactured as the positive control. Not used for other purposes.

**Loading Buffer:** 100mM Tris (pH6.8), 1% SDS, 150mM NaCl, 50% glycerol, 0.02% BPB, 50mM DTT and 0.02% NaN<sub>3</sub>.

**[ STORAGE AND STABILITY ]**

**Storage:** Avoid repeated freeze/thaw cycles.

Store at 4°C for frequent use.

Aliquot and store at -20°C for 24 months.

**Stability Test:** The thermal stability is described by the loss rate. The loss rate was determined by accelerated thermal degradation test, that is, incubate the protein at 37°C for 48h, and no obvious degradation and precipitation were observed. The loss rate is less than 5% within the expiration date under appropriate storage condition.

**[ IDENTIFICATION ]**

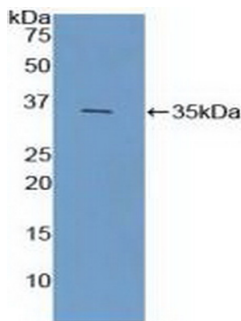
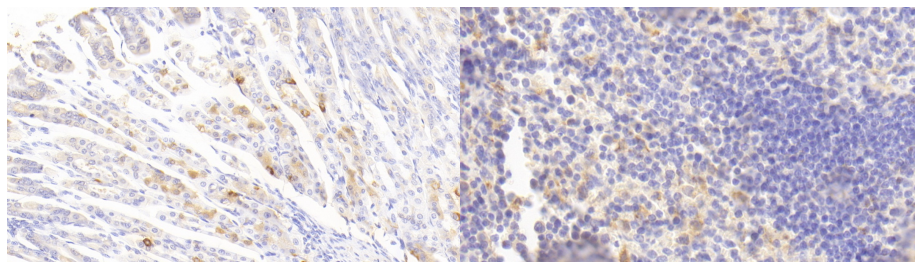
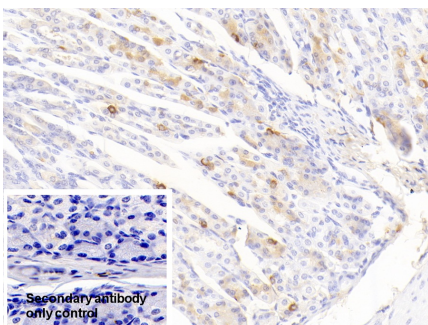


Figure. Western Blot; Sample: Recombinant FCN1, Mouse.

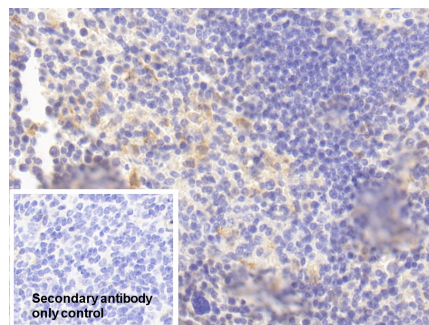


DAB staining on IHC-P; Samples: Mouse Stomach Tissue; Primary Ab: 20?g/ml Rabbit Anti-Mouse FCN1 Antibody Second Ab: 2µg/mL HRP-Linked Caprine Anti-Rabbit IgG Polyclonal Antibody (Catalog: SAA544Rb19)

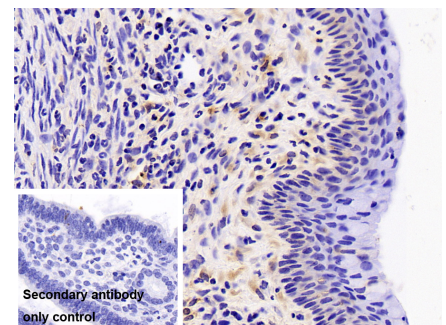
DAB staining on IHC-P; Samples: Mouse Spleen Tissue; Primary Ab: 20?g/ml Rabbit Anti-Mouse FCN1 Antibody Second Ab: 2µg/mL HRP-Linked Caprine Anti-Rabbit IgG Polyclonal Antibody (Catalog: SAA544Rb19)



DAB staining on IHC-P;

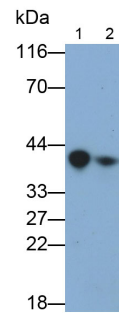
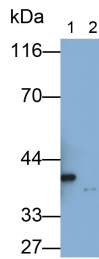
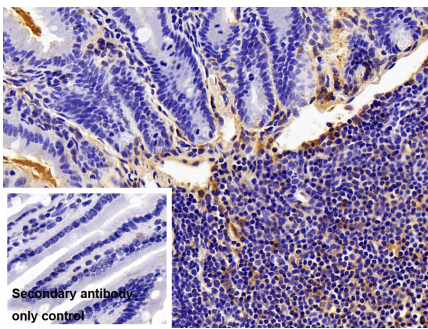


DAB staining on IHC-P;

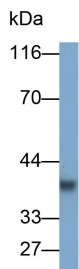


DAB staining on IHC-P;

<p>Sample: Mouse Stomach Tissue</p> <p>Primary Ab: 20µg/ml Rabbit Anti-Mouse FCN1 Antibody</p> <p>Control: Used PBS instead of primary antibody</p> <p>Second Ab: 2µg/ml HRP-Linked Caprine Anti-Rabbit IgG Polyclonal Antibody</p> <p>(Catalog: SAA544Rb19)</p>	<p>Sample: Mouse Spleen Tissue</p> <p>Primary Ab: 20µg/ml Rabbit Anti-Mouse FCN1 Antibody</p> <p>Control: Used PBS instead of primary antibody</p> <p>Second Ab: 2µg/ml HRP-Linked Caprine Anti-Rabbit IgG Polyclonal Antibody</p> <p>(Catalog: SAA544Rb19)</p>	<p>Sample: Mouse Uterus Tissue</p> <p>Primary Ab: 10µg/ml Rabbit Anti-Mouse FCN1 Antibody</p> <p>Control: Used PBS instead of primary antibody</p> <p>Second Ab: 2µg/ml HRP-Linked Caprine Anti-Rabbit IgG Polyclonal Antibody</p> <p>(Catalog: SAA544Rb19)</p>
--	---	---



<p>DAB staining on IHC-P;</p> <p>Sample: Mouse Small intestine Tissue</p> <p>Primary Ab: 10µg/ml Rabbit Anti-Mouse FCN1 Antibody</p> <p>Control: Used PBS instead of primary antibody</p> <p>Second Ab: 2µg/ml HRP-Linked Caprine Anti-Rabbit IgG Polyclonal Antibody</p> <p>(Catalog: SAA544Rb19)</p>	<p>Western Blot; Samples: Lane1: Mouse Serum; Lane2: Rat Serum;</p> <p>Primary Ab: 0.2µg/ml Rabbit Anti-Mouse FCN1 Antibody</p> <p>Second Ab: 0.2µg/ml HRP-Linked Caprine Anti-Rabbit IgG Polyclonal Antibody</p> <p>(Catalog: SAA544Rb19)</p>	<p>Western Blot; Samples: Lane1: Mouse Serum; Lane2: Rat Kidney lysate;</p> <p>Primary Ab: 0.2µg/ml Rabbit Anti-Mouse FCN1 Antibody</p> <p>Second Ab: 0.2µg/ml HRP-Linked Caprine Anti-Rabbit IgG Polyclonal Antibody</p> <p>(Catalog: SAA544Rb19)</p>
--	--	--



Western Blot; Sample: Mouse Spleen lysate

Primary Ab: 0.2µg/ml Rabbit Anti-  
Mouse FCN1 Antibody

Second Ab: 0.2µg/ml HRP-Linked  
Caprine Anti-Rabbit IgG Polyclonal  
Antibody

(Catalog: SAA544Rb19)

**[ IMPORTANT NOTE ]**

The kit is designed for research use only, we will not be responsible for any issue if the kit was used in clinical diagnostic or any other procedures.