

PAF061Hu01

Polyclonal Antibody to G Protein Alpha 11 (GNa11)

Organism Species: *Homo sapiens* (Human)

Instruction manual

FOR RESEARCH USE ONLY

NOT FOR USE IN CLINICAL DIAGNOSTIC PROCEDURES

13th Edition (Revised in Aug, 2023)

[PROPERTIES]

Source: Polyclonal antibody preparation

Host: Rabbit

Purification: Antigen-specific affinity chromatography followed by Protein A affinity chromatography

Traits: Liquid

Concentration: 0.5mg/mL

UOM: 100µl

Cross Reactivity: Rat

Applications: WB,IHC,ICC/IF; FCM

[IMMUNOGEN]

Immunogen: Recombinant GNa11 (Met1~Val359) expressed in *E.coli*

Accession No.: RPF061Hu01

[APPLICATIONS]

Western blotting: 0.5-2?g/mL;

Immunohistochemistry: 5-20?g/mL;

Immunocytochemistry: 5-20?g/mL;

Flow cytometry:20?g/ml;

Optimal working dilutions must be determined by end user.

[FORMULATION]

Form & Buffer: Supplied as solution form in 0.01M PBS, pH7.4, containing 0.05% Proclin-300, 50% glycerol.

[STORAGE AND STABILITY]

Storage: Avoid repeated freeze/thaw cycles.

Store at 4°C for frequent use.

Aliquot and store at -20°C for 24 months.

Stability Test: The thermal stability is described by the loss rate. The loss rate was determined by accelerated thermal degradation test, that is, incubate the protein at 37°C for 48h, and no obvious degradation and precipitation were observed. The loss rate is less than 5% within the expiration date under appropriate storage condition.

[IDENTIFICATION]

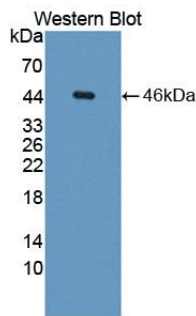
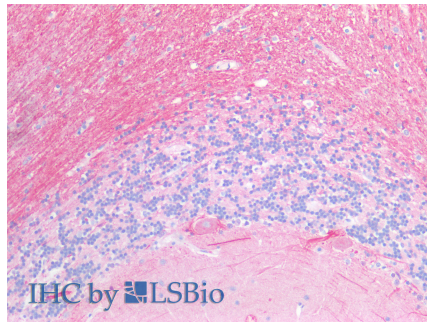
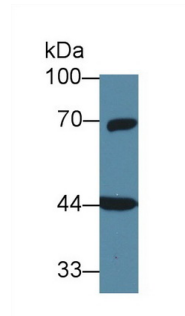


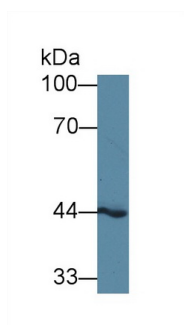
Figure. Western Blot; Sample: Recombinant GNa11, Human.



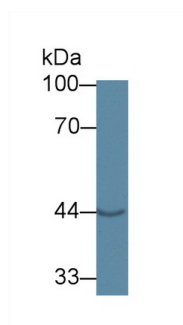
Vector Red staining on IHC-P;
Samples: Human Cerebellum Tissue;
Primary Ab: 10µg/ml Rabbit Anti-Human GNa11 Antibody
Second Ab: 2µg/mL HRP-Linked Caprine Anti-Rabbit IgG Polyclonal Antibody



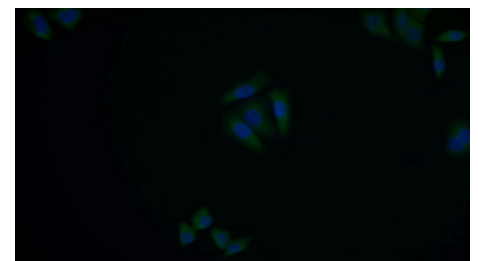
Western Blot; Sample: Rat Cerebrum lysate;
Primary Ab: 1µg/ml Rabbit Anti-Human GNa11 Antibody
Second Ab: 0.2µg/mL HRP-Linked Caprine Anti-Rabbit IgG Polyclonal Antibody
(Catalog: SAA544Rb19)



Western Blot; Sample: Human HepG2 cell lysate;
Primary Ab: 1µg/ml Rabbit Anti-Human GNa11 Antibody
Second Ab: 0.2µg/mL HRP-Linked Caprine Anti-Rabbit IgG Polyclonal Antibody



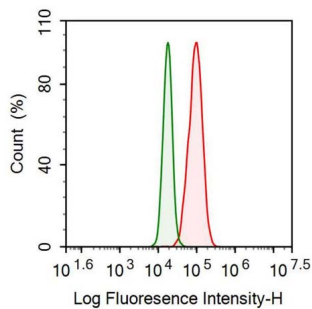
Western Blot; Sample: Human Jurkat cell lysate;
Primary Ab: 1µg/ml Rabbit Anti-Human GNa11 Antibody
Second Ab: 0.2µg/mL HRP-Linked Caprine Anti-Rabbit IgG Polyclonal Antibody



FITC staining on IF;
Samples: Human HepG2 cell;
Primary Ab: 20µg/ml Rabbit Anti-Human GNa11 Antibody
Second Ab: 1.5µg/ml FITC-Linked Caprine Anti-Rabbit IgG Polyclonal Antibody
(Catalog: SAA544Rb18)

(Catalog: SAA544Rb19)

(Catalog: SAA544Rb19)



Human A431 cell was fixed with 2% paraformaldehyde (10 min) , permeabilised with 0.1% BSA-Triton X-100, then stained with 20µg/ml rabbit Anti-human GNa11 Polyclonal Antibody (Catalog PAF061Hu01, red histogram) or Isotype control antibody (Catalog IS067-Rb01, green histogram), followed by 1µg/ml FITC-conjugated Anti-rabbit IgG Secondary Antibody (Catalog SAA544Rb18).

[IMPORTANT NOTE]

The kit is designed for research use only, we will not be responsible for any issue if the kit was used in clinical diagnostic or any other procedures.