

PAA321Ov01

Polyclonal Antibody to Galectin 1 (GAL1)

Organism Species: *Ovis aries*; *Ovine (Sheep)*

Instruction manual

FOR RESEARCH USE ONLY

NOT FOR USE IN CLINICAL DIAGNOSTIC PROCEDURES

13th Edition (Revised in Aug, 2023)

[PROPERTIES]

Source: Polyclonal antibody preparation

Host: Rabbit

Purification: Antigen-specific affinity chromatography followed by Protein A affinity chromatography

Traits: Liquid

Concentration: 0.5mg/ml

UOM: 50µl

Cross Reactivity: Human;Rat;Caprine

Applications: WB; IHC; ICC; IP.

[IMMUNOGEN]

Immunogen: Recombinant GAL1 (Ala2~Glu135) expressed in *E.coli*

Accession No.: RPA321Ov01

[APPLICATIONS]

Western blotting: 0.01-2µg/mL;

Immunohistochemistry: 5-20µg/mL;

Immunofluorescence:5-20µg/mL;

Optimal working dilutions must be determined by end user.

[FORMULATION]

Form & Buffer: Supplied as solution form in PBS, pH7.4, containing 0.02% NaN₃, 50% glycerol.

[STORAGE AND STABILITY]

Storage: Avoid repeated freeze/thaw cycles.

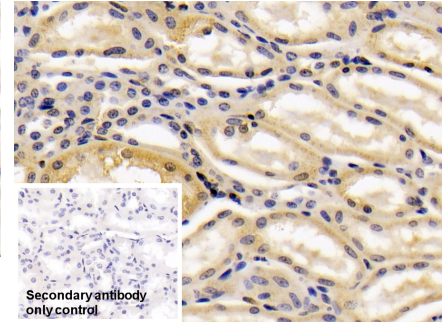
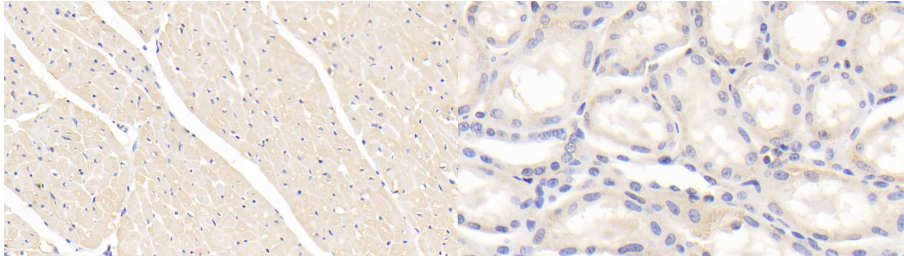
Store at 4°C for frequent use.

Aliquot and store at -20°C for 24 months.

Stability Test: The thermal stability is described by the loss rate. The loss rate was determined by accelerated thermal degradation test, that is, incubate the protein at 37°C for 48h, and no

obvious degradation and precipitation were observed. The loss rate is less than 5% within the expiration date under appropriate storage condition.

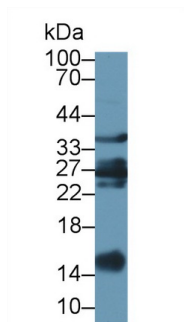
[IDENTIFICATION]



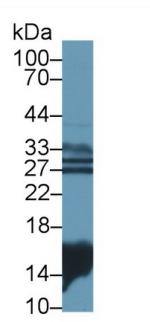
DAB staining on IHC-P; Samples:
 Caprine Cardiac Muscle Tissue;
 Primary Ab: 20?g/ml Rabbit Anti-Ovine
 GAL1 Antibody Second Ab:
 2µg/mL HRP-Linked Caprine Anti-
 Rabbit IgG Polyclonal Antibody
 (Catalog: SAA544Rb19)

DAB staining on IHC-P;
 Samples: Caprine Kidney Tissue;
 Primary Ab: 20?g/ml Rabbit Anti-Ovine
 GAL1 Antibody
 Second Ab: 2µg/mL HRP-Linked
 Caprine Anti-Rabbit IgG Polyclonal
 Antibody
 (Catalog: SAA544Rb19)

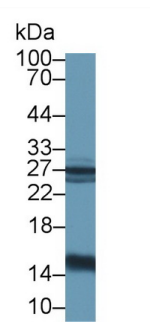
DAB staining on IHC-P;
 Sample: Caprine Kidney Tissue
 Primary Ab: 20µg/ml Rabbit Anti-Ovine
 GAL1 Antibody
 Control: Used PBS instead of primary
 antibody
 Second Ab: 2µg/ml HRP-Linked
 Caprine Anti-Rabbit IgG Polyclonal
 Antibody
 (Catalog: SAA544Rb19)



Western Blot; Sample: Caprine Liver
 lysate;
 Primary Ab: 1µg/ml Rabbit Anti-Ovine
 GAL1 Antibody
 Second Ab: 0.2µg/mL HRP-Linked
 Caprine Anti-Rabbit IgG Polyclonal
 Antibody



Western Blot; Sample: Caprine Lung
 lysate;
 Primary Ab: 1µg/ml Rabbit Anti-Ovine
 GAL1 Antibody
 Second Ab: 0.2µg/mL HRP-Linked
 Caprine Anti-Rabbit IgG Polyclonal
 Antibody

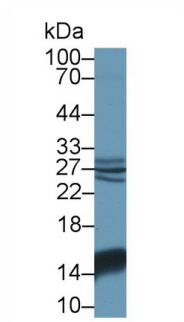


Western Blot; Sample: Caprine Heart
 lysate;
 Primary Ab: 1µg/ml Rabbit Anti-Ovine
 GAL1 Antibody
 Second Ab: 0.2µg/mL HRP-Linked
 Caprine Anti-Rabbit IgG Polyclonal
 Antibody

(Catalog: SAA544Rb19)

(Catalog: SAA544Rb19)

(Catalog: SAA544Rb19)



Western Blot; Sample: Caprine Small intestine lysate;

Primary Ab: 1 μ g/ml Rabbit Anti-Ovine GAL1 Antibody

Second Ab: 0.2 μ g/mL HRP-Linked Caprine Anti-Rabbit IgG Polyclonal Antibody

(Catalog: SAA544Rb19)

[**IMPORTANT NOTE**]

The kit is designed for research use only, we will not be responsible for any issue if the kit was used in clinical diagnostic or any other procedures.