

**PAA303Mu01**

**Polyclonal Antibody to Galectin 3 (GAL3)**

**Organism Species: *Mus musculus* (Mouse)**

***Instruction manual***

FOR RESEARCH USE ONLY

NOT FOR USE IN CLINICAL DIAGNOSTIC PROCEDURES

---

13th Edition (Revised in Aug, 2023)

### **[ PROPERTIES ]**

**Source:** Polyclonal antibody preparation

**Host:** Rabbit

**Purification:** Antigen-specific affinity chromatography followed by Protein A affinity chromatography

**Traits:** Liquid

**Concentration:** 0.49mg/ml

**UOM:** 100µl

**Cross Reactivity:** Human

**Applications:** WB; IHC; ICC; IP.

### **[ IMMUNOGEN ]**

**Immunogen:** Recombinant GAL3 (Ala2 ~Ile264) expressed in *E.coli*

**Accession No.:** RPA303Mu01

### **[ APPLICATIONS ]**

Western blotting: 0.01-2µg/mL

Immunohistochemistry: 5-20µg/mL

Immunocytochemistry: 5-20µg/mL

Optimal working dilutions must be determined by end user.

### **[ FORMULATION ]**

**Form & Buffer:** Supplied as solution form in PBS, pH7.4, containing 0.02% NaN<sub>3</sub>, 50% glycerol.

### **[ STORAGE AND STABILITY ]**

**Storage:** Avoid repeated freeze/thaw cycles.

Store at 4°C for frequent use.

Aliquot and store at -20°C for 24 months.

**Stability Test:** The thermal stability is described by the loss rate. The loss rate was determined by accelerated thermal degradation test, that is, incubate the protein at 37°C for 48h, and no

obvious degradation and precipitation were observed. The loss rate is less than 5% within the expiration date under appropriate storage condition.

**[ IDENTIFICATION ]**

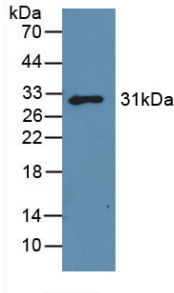
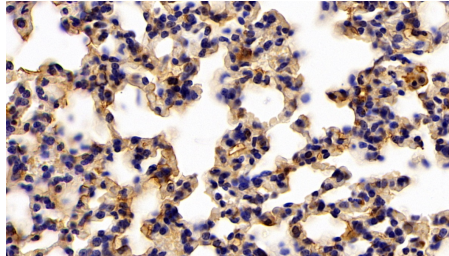
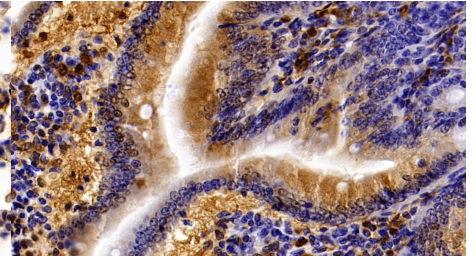


Figure. Western Blot; Sample: Recombinant GAL3, Mouse.



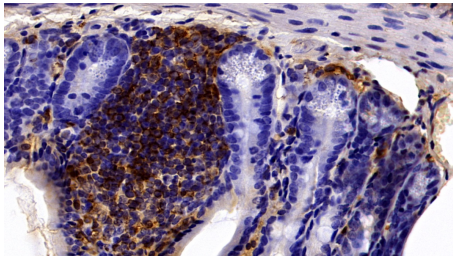
DAB staining on IHC-P;

Samples: Mouse Lung Tissue;  
 Primary Ab: 20µg/ml Rabbit Anti-Mouse GAL3 Antibody  
 Second Ab: 2µg/mL HRP-Linked Caprine Anti-Rabbit IgG Polyclonal Antibody  
 (Catalog: SAA544Rb19)



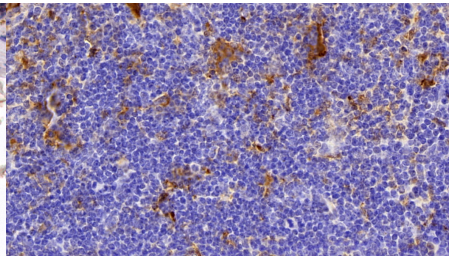
DAB staining on IHC-P;

Samples: Mouse Small Intestine Tissue;  
 Primary Ab: 20µg/ml Rabbit Anti-Mouse GAL3 Antibody  
 Second Ab: 2µg/mL HRP-Linked Caprine Anti-Rabbit IgG Polyclonal Antibody  
 (Catalog: SAA544Rb19)



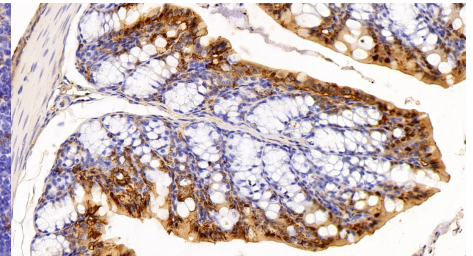
DAB staining on IHC-P;

Samples: Mouse Colon Tissue;  
 Primary Ab: 20µg/ml Rabbit Anti-Mouse GAL3 Antibody  
 Second Ab: 2µg/mL HRP-Linked Caprine Anti-Rabbit IgG Polyclonal Antibody  
 (Catalog: SAA544Rb19)



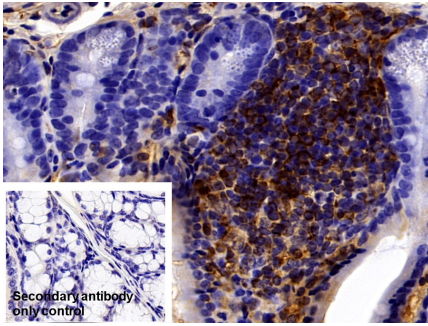
DAB staining on IHC-P;

Samples: Mouse Spleen Tissue;  
 Primary Ab: 20µg/ml Rabbit Anti-Mouse GAL3 Antibody  
 Second Ab: 2µg/mL HRP-Linked Caprine Anti-Rabbit IgG Polyclonal Antibody  
 (Catalog: SAA544Rb19)



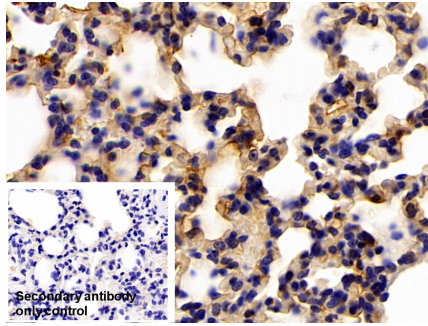
DAB staining on IHC-P;

Sample: Mouse Colon Tissue;  
 Primary Ab: 20µg/ml Rabbit Anti-Mouse GAL3 Antibody  
 Second Ab: 2µg/mL HRP-Linked Caprine Anti-Rabbit IgG Polyclonal Antibody  
 (Catalog: SAA544Rb19)



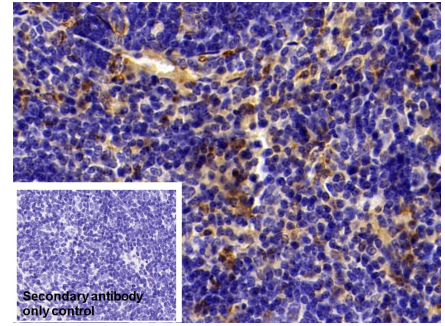
DAB staining on IHC-P;

Sample: Mouse Colon Tissue



DAB staining on IHC-P;

Sample: Mouse Lung Tissue



DAB staining on IHC-P;

Sample: Mouse Spleen Tissue

Primary Ab: 20µg/ml Rabbit Anti-Mouse GAL3 Antibody      Primary Ab: 20µg/ml Rabbit Anti-Mouse GAL3 Antibody      Primary Ab: 20µg/ml Rabbit Anti-Mouse GAL3 Antibody

GAL3 Antibody

GAL3 Antibody

GAL3 Antibody

Control: Used PBS instead of primary antibody

Control: Used PBS instead of primary antibody

Control: Used PBS instead of primary antibody

Second Ab: 2µg/ml HRP-Linked

Second Ab: 2µg/ml HRP-Linked

Second Ab: 2µg/ml HRP-Linked

Caprine Anti-Rabbit IgG Polyclonal

Caprine Anti-Rabbit IgG Polyclonal

Caprine Anti-Rabbit IgG Polyclonal

Antibody

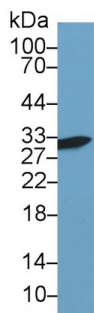
Antibody

Antibody

(Catalog: SAA544Rb19)

(Catalog: SAA544Rb19)

(Catalog: SAA544Rb19)



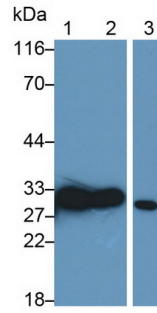
Western Blot; Sample: Human HeLa cell lysate;

Primary Ab: 1µg/ml Rabbit Anti-Mouse GAL3 Antibody

Second Ab: 0.2µg/mL HRP-Linked

Caprine Anti-Rabbit IgG Polyclonal Antibody

(Catalog: SAA544Rb19)



Western Blot; Sample: Lane1: Mouse Lung lysate; Lane2: Mouse Spleen

lysate; Lane3: HeLa cell lysate  
Primary Ab: 0.03µg/ml Rabbit Anti-Mouse GAL3 Antibody

Second Ab: 0.2µg/mL HRP-Linked Caprine Anti-Rabbit IgG Polyclonal

Antibody

(Catalog: SAA544Rb19)



Western Blot; Sample: Mouse Testis lysate;

Primary Ab: 1µg/ml Rabbit Anti-Mouse GAL3 Antibody

Second Ab: 0.2µg/mL HRP-Linked

Caprine Anti-Rabbit IgG Polyclonal Antibody

(Catalog: SAA544Rb19)

**[ IMPORTANT NOTE ]**

The kit is designed for research use only, we will not be responsible for any issue if the kit was used in clinical diagnostic or any other procedures.