

PAA372Ra01

Polyclonal Antibody to Gelsolin (GSN)

Organism Species: *Rattus norvegicus* (Rat)

Instruction manual

FOR RESEARCH USE ONLY

NOT FOR USE IN CLINICAL DIAGNOSTIC PROCEDURES

13th Edition (Revised in Aug, 2023)

[PROPERTIES]

Source: Polyclonal antibody preparation

Host: Rabbit

Purification: Antigen-specific affinity chromatography followed by Protein A affinity chromatography

Traits: Liquid

Concentration: 0.25mg/mL

UOM: 10 μ L

Cross Reactivity: Human;Mouse

Applications: WB; IHC; ICC; IP.

[IMMUNOGEN]

Immunogen: Recombinant GSN (Ala432~Ala780) expressed in *E.coli*

Accession No.: RPA372Ra01

[APPLICATIONS]

Western blotting: 0.01-5 μ g/mL;

Immunohistochemistry: 5-20 μ g/mL;

Immunocytochemistry: 5-20 μ g/mL;

Optimal working dilutions must be determined by end user.

[FORMULATION]

Form & Buffer: Supplied as solution form in 0.01M PBS, pH7.4, containing 0.05% Proclin-300, 50% glycerol.

[STORAGE AND STABILITY]

Storage: Avoid repeated freeze/thaw cycles.

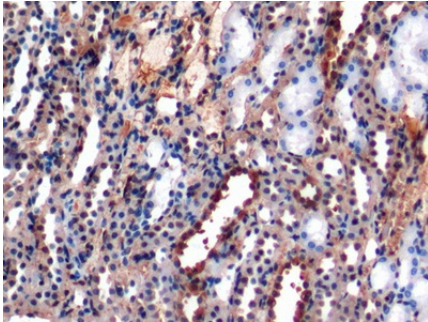
Store at 4°C for frequent use.

Aliquot and store at -20°C for 24 months.

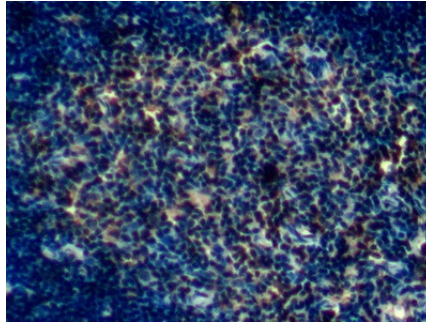
Stability Test: The thermal stability is described by the loss rate. The loss rate was determined by accelerated thermal degradation test, that is, incubate the protein at 37°C for 48h, and no

obvious degradation and precipitation were observed. The loss rate is less than 5% within the expiration date under appropriate storage condition.

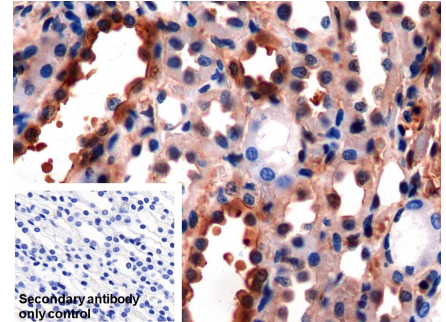
[IDENTIFICATION]



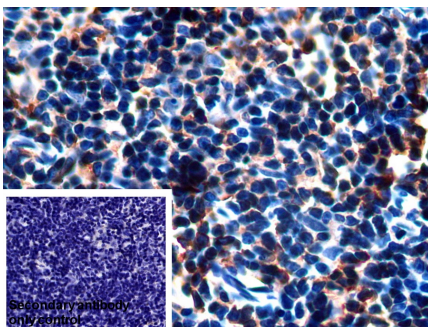
DAB staining on IHC-P; Samples: Rat Kidney Tissue; Primary Ab: 10µg/ml Rabbit Anti-Rat GS Antibody Second Ab: 2µg/mL HRP-Linked Caprine Anti-Rabbit IgG Polyclonal Antibody (Catalog: SAA544Rb19)



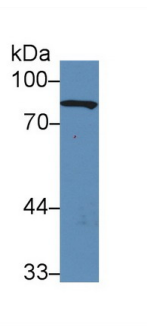
DAB staining on IHC-P; Samples: Rat Thymus Tissue; Primary Ab: 10µg/ml Rabbit Anti-Rat GS Antibody Second Ab: 2µg/mL HRP-Linked Caprine Anti-Rabbit IgG Polyclonal Antibody (Catalog: SAA544Rb19)



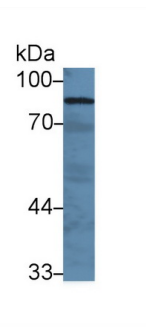
DAB staining on IHC-P; Sample: Rat Kidney Tissue Primary Ab: 10µg/ml Rabbit Anti-Rat GSN Antibody Control: Used PBS instead of primary antibody Second Ab: 2µg/ml HRP-Linked Caprine Anti-Rabbit IgG Polyclonal Antibody (Catalog: SAA544Rb19)



DAB staining on IHC-P; Sample: Rat Thymus Tissue Primary Ab: 10µg/ml Rabbit Anti-Rat GSN Antibody Control: Used PBS instead of primary antibody Second Ab: 2µg/ml HRP-Linked



Western Blot; Sample: Rat Serum; Primary Ab: 5µg/ml Rabbit Anti-Rat GS Antibody Second Ab: 0.2µg/mL HRP-Linked Caprine Anti-Rabbit IgG Polyclonal Antibody (Catalog: SAA544Rb19)

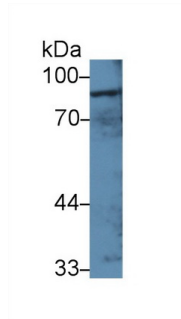
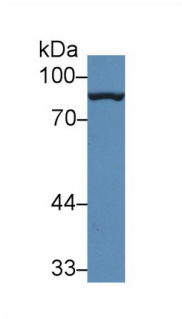


Western Blot; Sample: Rat Lung lysate; Primary Ab: 5µg/ml Rabbit Anti-Rat GS Antibody Second Ab: 0.2µg/mL HRP-Linked Caprine Anti-Rabbit IgG Polyclonal Antibody (Catalog: SAA544Rb19)

Caprine Anti-Rabbit IgG Polyclonal

Antibody

(Catalog: SAA544Rb19)



Western Blot; Sample: Rat Cerebrum lysate; Primary Ab: 5µg/ml Rabbit Anti-Rat GS

Antibody
 Primary Ab: 5µg/ml Rabbit Anti-Rat GS

Second Ab: 0.2µg/mL HRP-Linked

Caprine Anti-Rabbit IgG Polyclonal

Antibody

(Catalog: SAA544Rb19)

Antibody

Second Ab: 0.2µg/mL HRP-Linked

Caprine Anti-Rabbit IgG Polyclonal

Antibody

(Catalog: SAA544Rb19)

[IMPORTANT NOTE]

The kit is designed for research use only, we will not be responsible for any issue if the kit was used in clinical diagnostic or any other procedures.