

**PAA659Ra01**

**Polyclonal Antibody to Glutathione S Transferase A4 (GSTA4)**

**Organism Species: *Rattus norvegicus* (Rat)**

***Instruction manual***

FOR RESEARCH USE ONLY

NOT FOR USE IN CLINICAL DIAGNOSTIC PROCEDURES

---

13th Edition (Revised in Aug, 2023)

**[ PROPERTIES ]**

**Source:** Polyclonal antibody preparation

**Host:** Rabbit

**Purification:** Antigen-specific affinity chromatography followed by Protein A affinity chromatography

**Traits:** Liquid

**Concentration:** 0.5mg/mL

**UOM:** 100µl

**Cross Reactivity:** N/A

**Applications:** WB,IHC

**[ IMMUNOGEN ]**

**Immunogen:** Recombinant GSTA4 (Glu2~Phe222) expressed in *E.coli*

**Accession No.:** RPA659Ra01

**[ APPLICATIONS ]**

Western blotting: 0.01-2µg/mL

Immunohistochemistry: 5-20µg/mL

Optimal working dilutions must be determined by end user.

**[ FORMULATION ]**

**Form & Buffer:** Supplied as solution form in 0.01M PBS, pH7.4, containing 0.05% Proclin-300, 50% glycerol.

**[ STORAGE AND STABILITY ]**

**Storage:** Avoid repeated freeze/thaw cycles.

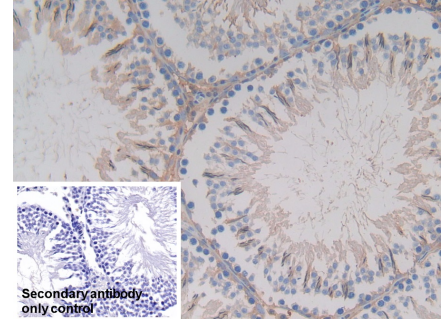
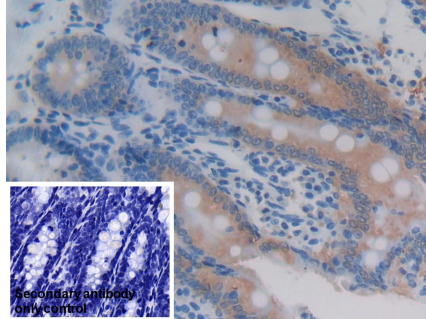
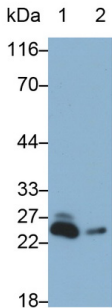
Store at 4°C for frequent use.

Aliquot and store at -20°C for 24 months.

**Stability Test:** The thermal stability is described by the loss rate. The loss rate was determined by accelerated thermal degradation test, that is, incubate the protein at 37°C for 48h, and no obvious degradation and precipitation were observed. The loss rate is less than 5% within the

expiration date under appropriate storage condition.

**[ IDENTIFICATION ]**



Western Blot; Sample: Lane1: Rat Liver lysate; Lane2: Rat Lung lysate  
 Primary Ab: 0.2µg/ml Rabbit Anti-Rat GSTA4 Antibody  
 Second Ab: 0.2µg/mL HRP-Linked Caprine Anti-Rabbit IgG Polyclonal Antibody (Catalog: SAA544Rb19) Selected

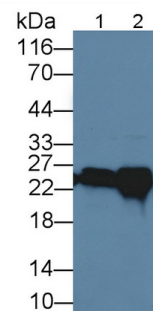
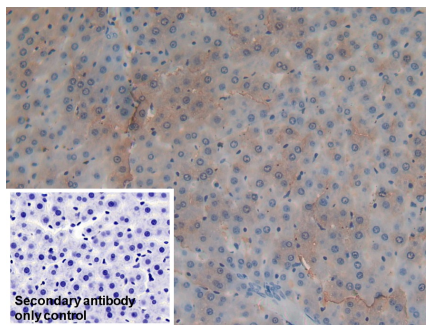
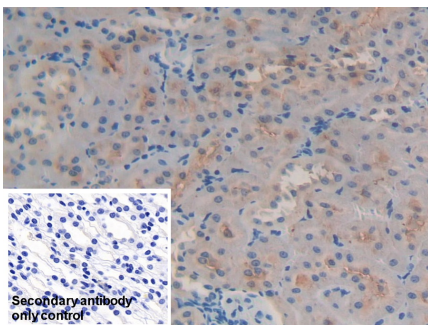
DAB staining on IHC-P; Samples: Rat Colon Tissue; Primary Ab: 20µg/ml Rabbit Anti-Rat GSTa4 Antibody  
 Second Ab: 2µg/mL HRP-Linked Caprine Anti-Rabbit IgG Polyclonal Antibody (Catalog: SAA544Rb19)

DAB staining on IHC-P; Sample: Rat Testis Tissue; Primary Ab: 20µg/ml Rabbit Anti-Rat GSTa4 Antibody  
 Second Ab: 2µg/mL HRP-Linked Caprine Anti-Rabbit IgG Polyclonal Antibody

(Catalog: SAA544Rb19)

Secondary antibody only control: Used PBS instead of primary antibody, Second Ab: 2µg/mL HRP-Linked Caprine Anti-Rabbit IgG Polyclonal Antibody

(Catalog: SAA544Rb19)



DAB staining on IHC-P;

Sample: Rat Kidney Tissue;

Primary Ab: 20µg/ml Rabbit Anti-Rat GSTa4 Antibody

Second Ab: 2µg/mL HRP-Linked

DAB staining on IHC-P;

Sample: Rat Liver Tissue;

Primary Ab: 20µg/ml Rabbit Anti-Rat GSTa4 Antibody

Second Ab: 2µg/mL HRP-Linked

Western Blot; Sample: Lane1: Rat Cerebrum lysate; Lane2: Rat Liver lysate

Primary Ab: 5µg/ml Rabbit Anti-Rat GSTA4 Antibody

Caprine Anti-Rabbit IgG Polyclonal Antibody (Catalog: SAA544Rb19)	Caprine Anti-Rabbit IgG Polyclonal Antibody (Catalog: SAA544Rb19)	Second Ab: 0.2µg/mL HRP-Linked Caprine Anti-Rabbit IgG Polyclonal Antibody (Catalog: SAA544Rb19) Selected
Secondary antibody only control: Used PBS instead of primary antibody, Second Ab: 2µg/mL HRP-Linked	Secondary antibody only control: Used PBS instead of primary antibody, Second Ab: 2µg/mL HRP-Linked	
Caprine Anti-Rabbit IgG Polyclonal Antibody (Catalog: SAA544Rb19)	Caprine Anti-Rabbit IgG Polyclonal Antibody (Catalog: SAA544Rb19)	

### **[ IMPORTANT NOTE ]**

The kit is designed for research use only, we will not be responsible for any issue if the kit was used in clinical diagnostic or any other procedures.