

**PAB090Hu01**

**Polyclonal Antibody to Glutathione S Transferase Pi (GSTp)**

**Organism Species: *Homo sapiens (Human)***

***Instruction manual***

FOR RESEARCH USE ONLY

NOT FOR USE IN CLINICAL DIAGNOSTIC PROCEDURES

---

13th Edition (Revised in Aug, 2023)

### [ **PROPERTIES** ]

**Source:** Polyclonal antibody preparation

**Host:** Rabbit

**Purification:** Antigen-specific affinity chromatography followed by Protein A affinity chromatography

**Traits:** Liquid

**Concentration:** 0.5mg/ml

**UOM:** 100µl

**Cross Reactivity:** Mouse;Rat;Porcine

**Applications:** WB; IHC; ICC/IF

### [ **IMMUNOGEN** ]

**Immunogen:** Recombinant GSTp (Met1-Gln210) expressed in *E.coli*

**Accession No.:** RPB090Hu01

### [ **APPLICATIONS** ]

Western blotting: 0.01-2µg/mL;

Immunohistochemistry: 5-20µg/mL;

Immunocytochemistry: 5-20µg/mL;

Optimal working dilutions must be determined by end user.

### [ **FORMULATION** ]

**Form & Buffer:** Supplied as solution form in PBS, pH7.4, containing 0.02% NaN<sub>3</sub>, 50% glycerol.

### [ **STORAGE AND STABILITY** ]

**Storage:** Avoid repeated freeze/thaw cycles.

Store at 4°C for frequent use.

Aliquot and store at -20°C for 24 months.

**Stability Test:** The thermal stability is described by the loss rate. The loss rate was determined by accelerated thermal degradation test, that is, incubate the protein at 37°C for 48h, and no

obvious degradation and precipitation were observed. The loss rate is less than 5% within the expiration date under appropriate storage condition.

**[ IDENTIFICATION ]**

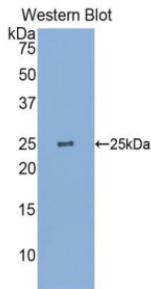
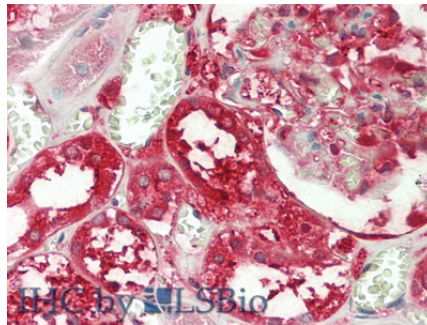
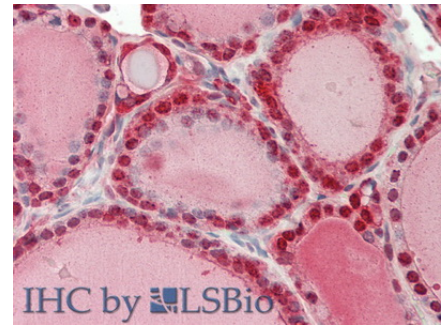


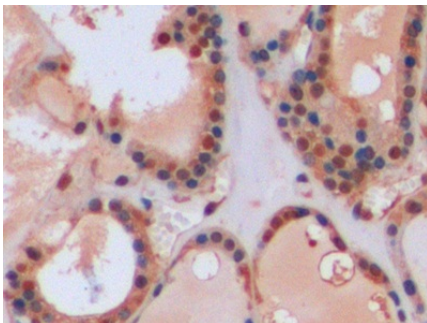
Figure. Western Blot; Sample: Recombinant GSTp, Human.



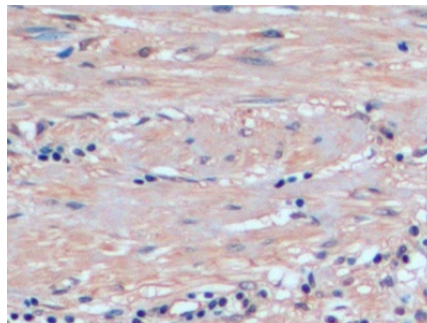
Vector Red staining on IHC-P;  
Samples: Human Kidney Tissue;  
Primary Ab: 5µg/ml Rabbit Anti-Human GSTp Antibody  
Second Ab: 2µg/mL HRP-Linked Caprine Anti-Rabbit IgG Polyclonal Antibody



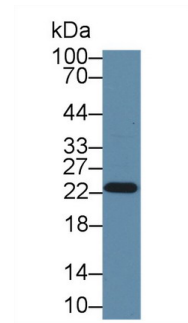
Vector Red staining on IHC-P;  
Samples: Human Thyroid Tissue;  
Primary Ab: 5µg/ml Rabbit Anti-Human GSTp Antibody  
Second Ab: 2µg/mL HRP-Linked Caprine Anti-Rabbit IgG Polyclonal Antibody



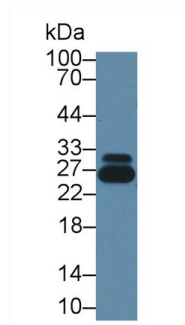
DAB staining on IHC-P;  
Samples: Human Thyroid Tissue;  
Primary Ab: 10µg/ml Rabbit Anti-Human GSTp Antibody  
Second Ab: 2µg/mL HRP-Linked Caprine Anti-Rabbit IgG Polyclonal Antibody  
(Catalog: SAA544Rb19)



DAB staining on IHC-P;  
Samples: Human Prostate Tissue;  
Primary Ab: 10µg/ml Rabbit Anti-Human GSTp Antibody  
Second Ab: 2µg/mL HRP-Linked Caprine Anti-Rabbit IgG Polyclonal Antibody  
(Catalog: SAA544Rb19)



Western Blot; Sample: A549 cell lysate;  
Primary Ab: 1µg/ml Rabbit Anti-Human GSTp Antibody  
Second Ab: 0.2µg/mL HRP-Linked Caprine Anti-Rabbit IgG Polyclonal Antibody  
(Catalog: SAA544Rb19) Selected



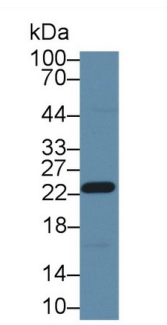
Western Blot; Sample: Human Serum;  
Primary Ab: 1µg/ml Rabbit Anti-Human

GSTp Antibody

Second Ab: 0.2µg/mL HRP-Linked

Caprine Anti-Rabbit IgG Polyclonal  
Antibody

(Catalog: SAA544Rb19) Selected



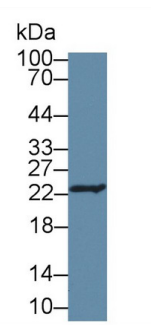
Western Blot; Sample: Porcine  
Stomach lysate;

Primary Ab: 1µg/ml Rabbit Anti-Human  
GSTp Antibody

Second Ab: 0.2µg/mL HRP-Linked  
Caprine Anti-Rabbit IgG Polyclonal

Antibody

(Catalog: SAA544Rb19) Selected



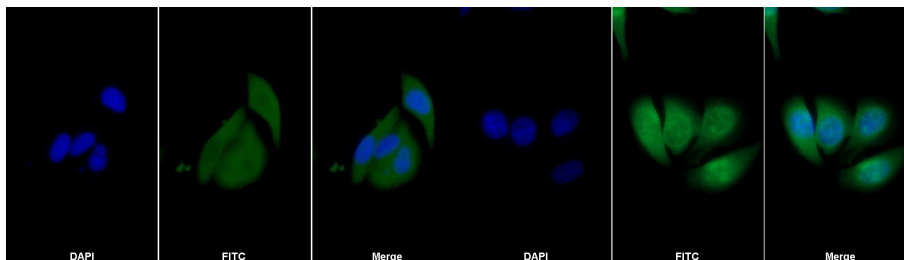
Western Blot; Sample: Porcine Skin  
lysate;

Primary Ab: 1µg/ml Rabbit Anti-Human  
GSTp Antibody

Second Ab: 0.2µg/mL HRP-Linked  
Caprine Anti-Rabbit IgG Polyclonal

Antibody

(Catalog: SAA544Rb19) Selected



FITC staining on IF;

Samples: Human MCF7 cell;

Primary Ab: 20µg/ml Rabbit Anti-  
Human GSTp Antibody

Second Ab: 0.75µg/ml FITC-Linked  
Caprine Anti-Rabbit IgG Polyclonal

Antibody

(Catalog: SAA544Rb18)

FITC staining on IF;

Sample: Human HepG2 cell;

Primary Ab: 20ug/ml Rabbit Anti-  
Human GSTp Antibody

Second Ab: 2µg/ml FITC-Linked  
Caprine Anti-Rabbit IgG Polyclonal

Antibody

(Catalog: SAA544Rb18)

### [ **IMPORTANT NOTE** ]

The kit is designed for research use only, we will not be responsible for any issue if the kit was used in clinical diagnostic or any other procedures.