

PAA301Bo01

Polyclonal Antibody to Heat Shock 70kDa Protein 1B (HSPA1B)

Organism Species: *Bos taurus*; Bovine (Cattle)

Instruction manual

FOR RESEARCH USE ONLY

NOT FOR USE IN CLINICAL DIAGNOSTIC PROCEDURES

13th Edition (Revised in Aug, 2023)

[PROPERTIES]

Source: Polyclonal antibody preparation

Host: Rabbit

Purification: Antigen-specific affinity chromatography followed by Protein A affinity chromatography

Traits: Liquid

Concentration: 0.5mg/mL

UOM: 10µL

Cross Reactivity: Human;Mouse;Rat

Applications: WB; IHC; ICC; IP.

[IMMUNOGEN]

Immunogen: Recombinant HSPA1B (Met1~Asp641) expressed in *E.coli*

Accession No.: RPA301Bo01

[APPLICATIONS]

Western blotting: 0.01-2µg/mL;

Immunohistochemistry: 5-20µg/mL;

Immunofluorescence:5-20µg/mL;

Optimal working dilutions must be determined by end user.

[FORMULATION]

Form & Buffer: Supplied as solution form in PBS, pH7.4, containing 0.02% NaN₃, 50% glycerol.

[STORAGE AND STABILITY]

Storage: Avoid repeated freeze/thaw cycles.

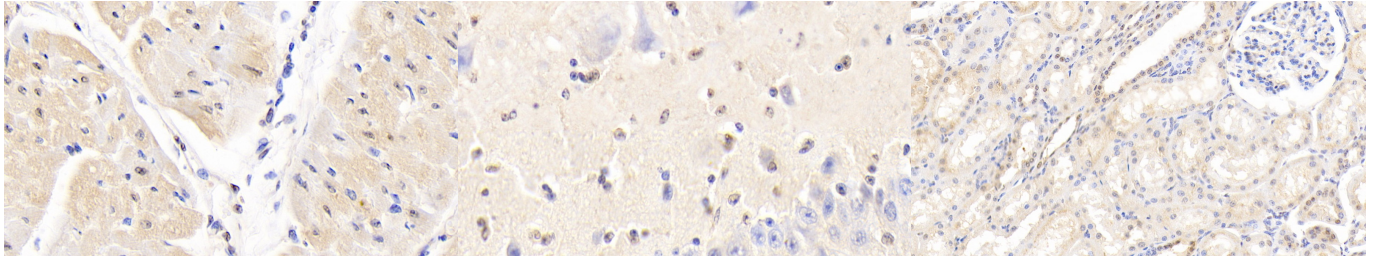
Store at 4°C for frequent use.

Aliquot and store at -20°C for 24 months.

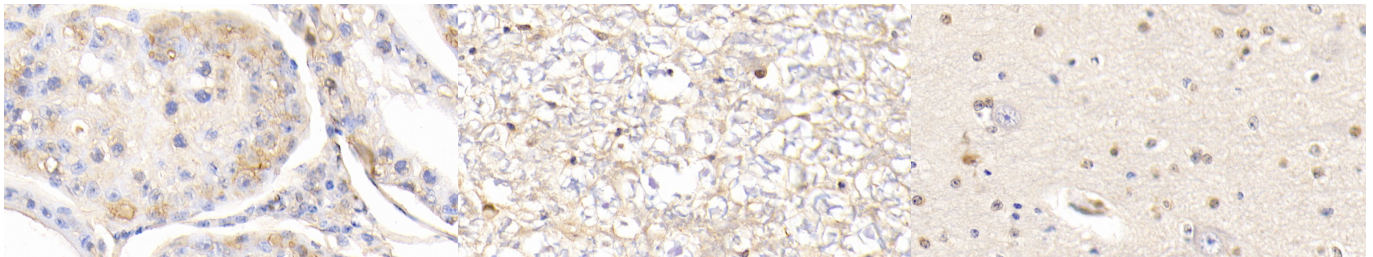
Stability Test: The thermal stability is described by the loss rate. The loss rate was determined by accelerated thermal degradation test, that is, incubate the protein at 37°C for 48h, and no

obvious degradation and precipitation were observed. The loss rate is less than 5% within the expiration date under appropriate storage condition.

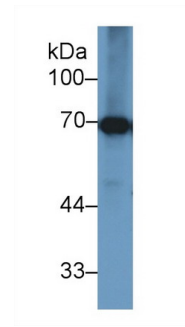
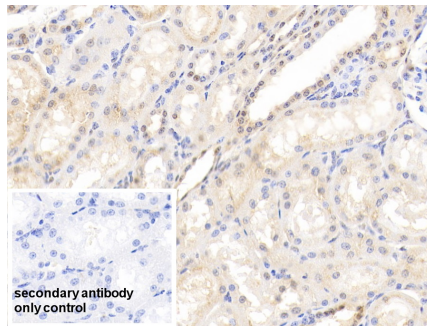
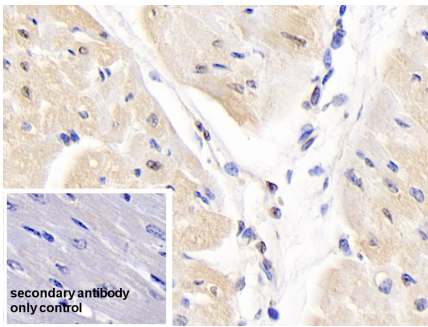
[IDENTIFICATION]



<p>DAB staining on IHC-P; Samples: Bovine Cardiac Muscle Tissue; Primary Ab: 20?g/ml Rabbit Anti-Bovine HSPA1B Antibody Second Ab: 2µg/mL HRP-Linked Caprine Anti-Rabbit IgG Polyclonal Antibody (Catalog: SAA544Rb19)</p>	<p>DAB staining on IHC-P; Samples: Bovine Cerebellum Tissue; Primary Ab: 20?g/ml Rabbit Anti-Bovine HSPA1B Antibody Second Ab: 2µg/mL HRP-Linked Caprine Anti-Rabbit IgG Polyclonal Antibody (Catalog: SAA544Rb19)</p>	<p>DAB staining on IHC-P; Samples: Bovine Kidney Tissue; Primary Ab: 20?g/ml Rabbit Anti-Bovine HSPA1B Antibody Second Ab: 2µg/mL HRP-Linked Caprine Anti-Rabbit IgG Polyclonal Antibody (Catalog: SAA544Rb19)</p>
--	--	--



<p>DAB staining on IHC-P; Samples: Bovine Testis Tissue; Primary Ab: 20?g/ml Rabbit Anti-Bovine HSPA1B Antibody Second Ab: 2µg/mL HRP-Linked Caprine Anti-Rabbit IgG Polyclonal Antibody (Catalog: SAA544Rb19)</p>	<p>DAB staining on IHC-P; Samples: Bovine Spinal cord Tissue; Primary Ab: 20?g/ml Rabbit Anti-Bovine HSPA1B Antibody Second Ab: 2µg/mL HRP-Linked Caprine Anti-Rabbit IgG Polyclonal Antibody (Catalog: SAA544Rb19)</p>	<p>DAB staining on IHC-P; Samples: Bovine Cerebrum Tissue; Primary Ab: 20?g/ml Rabbit Anti-Bovine HSPA1B Antibody Second Ab: 2µg/mL HRP-Linked Caprine Anti-Rabbit IgG Polyclonal Antibody (Catalog: SAA544Rb19)</p>
--	---	--



DAB staining on IHC-P;

DAB staining on IHC-P;

Western Blot; Sample: Bovine Liver

Sample: Bovine Cardiac Muscle Tissue

Sample: Bovine Kidney Tissue

lysate;

Primary Ab: 20µg/ml Rabbit Anti-Bovine HSPA1B Antibody

Control: Used PBS instead of primary antibody

Control: Used PBS instead of primary antibody

Primary Ab: 1µg/ml Rabbit Anti-Bovine HSPA1B Antibody

Second Ab: 2µg/ml HRP-Linked Caprine Anti-Rabbit IgG Polyclonal Antibody

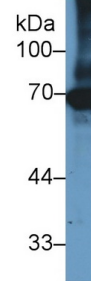
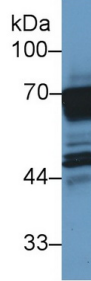
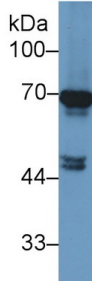
(Catalog: SAA544Rb19)

Second Ab: 2µg/ml HRP-Linked Caprine Anti-Rabbit IgG Polyclonal Antibody

(Catalog: SAA544Rb19)

Second Ab: 2µg/ml HRP-Linked Caprine Anti-Rabbit IgG Polyclonal Antibody

(Catalog: SAA544Rb19)



Western Blot; Sample: Bovine Cerebrum lysate;

Western Blot; Sample: Bovine Kidney lysate;

Western Blot; Sample: Bovine Testis lysate;

Primary Ab: 1µg/ml Rabbit Anti-Bovine HSPA1B Antibody

Second Ab: 0.2µg/mL HRP-Linked Caprine Anti-Rabbit IgG Polyclonal Antibody

(Catalog: SAA544Rb19)

Second Ab: 0.2µg/mL HRP-Linked Caprine Anti-Rabbit IgG Polyclonal Antibody

(Catalog: SAA544Rb19)

Second Ab: 0.2µg/mL HRP-Linked Caprine Anti-Rabbit IgG Polyclonal Antibody

(Catalog: SAA544Rb19)

[IMPORTANT NOTE]

The kit is designed for research use only, we will not be responsible for any issue if the kit was used in clinical diagnostic or any other procedures.