

PAA301Mu01

Polyclonal Antibody to Heat Shock 70kDa Protein 1B (HSPA1B)

Organism Species: *Mus musculus* (Mouse)

Instruction manual

FOR RESEARCH USE ONLY

NOT FOR USE IN CLINICAL DIAGNOSTIC PROCEDURES

13th Edition (Revised in Aug, 2023)

[**PROPERTIES**]

Source: Polyclonal antibody preparation

Host: Rabbit

Purification: Antigen-specific affinity chromatography followed by Protein A affinity chromatography

Traits: Liquid

Concentration: 0.5mg/mL

UOM: 100µL

Cross Reactivity: Human

Applications: WB; IHC; ICC/IF

[**IMMUNOGEN**]

Immunogen: Recombinant HSPA1B (Met1~Asp642) expressed in *E.coli*

Accession No.: RPA301Mu01

[**APPLICATIONS**]

Western blotting: 0.01-2µg/mL;

Immunohistochemistry: 5-20µg/mL;

Immunofluorescence:5-20µg/mL;

Optimal working dilutions must be determined by end user.

[**FORMULATION**]

Form & Buffer: Supplied as solution form in 0.01M PBS, pH7.4, containing 0.05% Proclin-300, 50% glycerol.

[**STORAGE AND STABILITY**]

Storage: Avoid repeated freeze/thaw cycles.

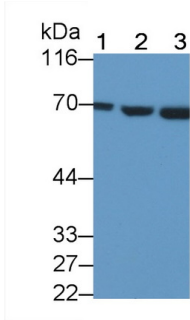
Store at 4°C for frequent use.

Aliquot and store at -20°C for 24 months.

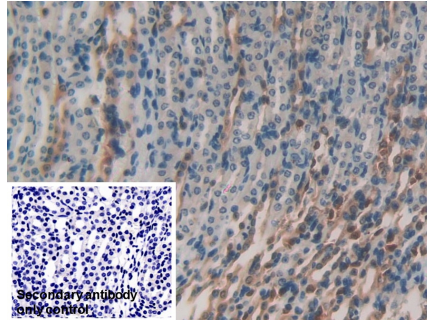
Stability Test: The thermal stability is described by the loss rate. The loss rate was determined by accelerated thermal degradation test, that is, incubate the protein at 37°C for 48h, and no

obvious degradation and precipitation were observed. The loss rate is less than 5% within the expiration date under appropriate storage condition.

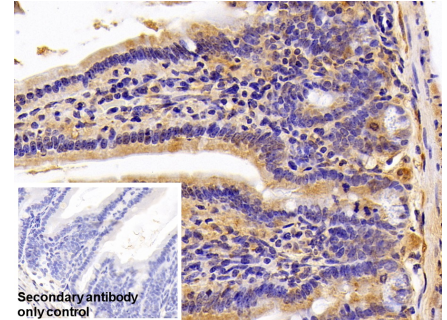
[IDENTIFICATION]



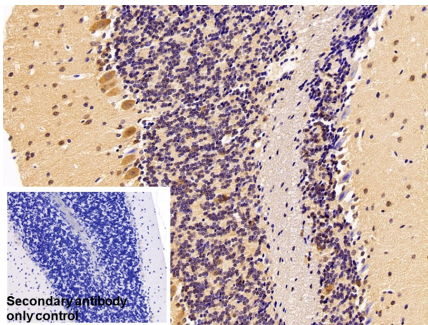
Western Blot; Sample: Lane1: MCF7 cell lysate; Lane2: Mouse Kidney lysate; Lane3: Mouse Testis lysate
 Primary Ab: 0.1µg/ml Rabbit Anti-Mouse HSPA1A Antibody Second Ab: 0.2µg/mL HRP-Linked Caprine Anti-Rabbit IgG Polyclonal Antibody (Catalog: SAA544Rb19) Selected



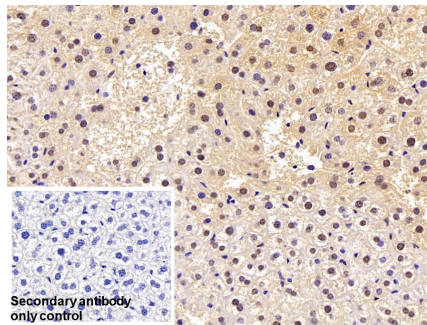
DAB staining on IHC-P; Samples: Mouse Kidney Tissue; Primary Ab: 20µg/ml Rabbit Anti-Mouse HSPA1A Antibody Second Ab: 2µg/mL HRP-Linked Caprine Anti-Rabbit IgG Polyclonal Antibody (Catalog: SAA544Rb19)



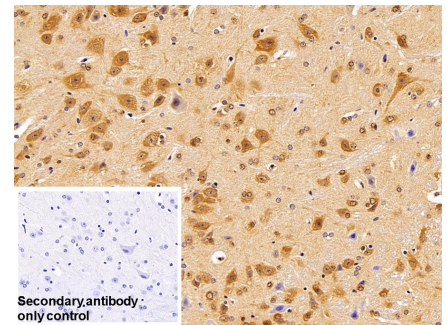
DAB staining on IHC-P; Sample: Mouse Small intestine Tissue
 Primary Ab: 10µg/ml Rabbit Anti-Mouse HSPA1A Antibody
 Control: Used PBS instead of primary antibody
 Second Ab: 2?g/ml HRP-Linked Caprine Anti-Rabbit IgG Polyclonal Antibody (Catalog: SAA544Rb19)



DAB staining on IHC-P; Sample: Mouse Cerebellum Tissue
 Primary Ab: 10µg/ml Rabbit Anti-Mouse HSPA1A Antibody
 Control: Used PBS instead of primary antibody
 Second Ab: 2?g/ml HRP-Linked

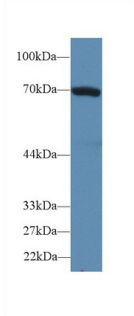


DAB staining on IHC-P; Sample: Mouse Liver Tissue
 Primary Ab: 10µg/ml Rabbit Anti-Mouse HSPA1A Antibody
 Control: Used PBS instead of primary antibody
 Second Ab: 2?g/ml HRP-Linked



DAB staining on IHC-P; Sample: Mouse Spinal cord Tissue
 Primary Ab: 10µg/ml Rabbit Anti-Mouse HSPA1A Antibody
 Control: Used PBS instead of primary antibody
 Second Ab: 2?g/ml HRP-Linked

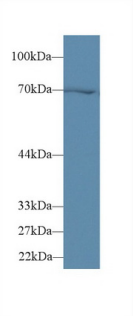
Caprine Anti-Rabbit IgG Polyclonal
Antibody
(Catalog: SAA544Rb19)



Western Blot; Sample: HepG2 cell lysate;

Primary Ab: 2µg/ml Rabbit Anti-Mouse HSPA1A Antibody
Second Ab: 0.2µg/mL HRP-Linked Caprine Anti-Rabbit IgG Polyclonal Antibody
(Catalog: SAA544Rb19) Selected

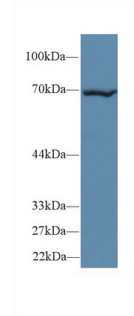
Caprine Anti-Rabbit IgG Polyclonal
Antibody
(Catalog: SAA544Rb19)



Western Blot; Sample: Mouse Cerebrum lysate;

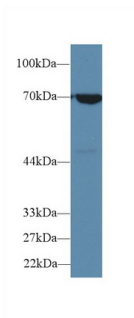
Primary Ab: 2µg/ml Rabbit Anti-Mouse HSPA1A Antibody
Second Ab: 0.2µg/mL HRP-Linked Caprine Anti-Rabbit IgG Polyclonal Antibody
(Catalog: SAA544Rb19) Selected

Caprine Anti-Rabbit IgG Polyclonal
Antibody
(Catalog: SAA544Rb19)

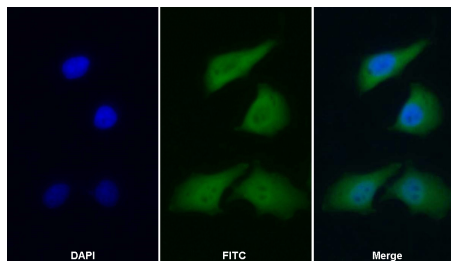


Western Blot; Sample: Mouse Liver lysate;

Primary Ab: 2µg/ml Rabbit Anti-Mouse HSPA1A Antibody
Second Ab: 0.2µg/mL HRP-Linked Caprine Anti-Rabbit IgG Polyclonal Antibody
(Catalog: SAA544Rb19) Selected



Western Blot; Sample: A549 cell lysate;
Primary Ab: 2µg/ml Rabbit Anti-Mouse HSPA1A Antibody
Second Ab: 0.2µg/mL HRP-Linked Caprine Anti-Rabbit IgG Polyclonal Antibody
(Catalog: SAA544Rb19) Selected



FITC staining on IF;

Samples: Human HepG2 cell;
Primary Ab: 20µg/ml Rabbit Anti-Mouse HSPA1A Antibody
Second Ab: 1.5µg/ml FITC-Linked Caprine Anti-Rabbit IgG Polyclonal Antibody
(Catalog: SAA544Rb18)

[IMPORTANT NOTE]

The kit is designed for research use only, we will not be responsible for any issue if the kit was used in clinical diagnostic or any other procedures.