

PAD523Hu01

Polyclonal Antibody to Heat Shock Protein 90kDa Alpha A1 (HSP90aA1)

Organism Species: *Homo sapiens (Human)*

Instruction manual

FOR RESEARCH USE ONLY

NOT FOR USE IN CLINICAL DIAGNOSTIC PROCEDURES

13th Edition (Revised in Aug, 2023)

[PROPERTIES]

Source: Polyclonal antibody preparation

Host: Rabbit

Purification: Antigen-specific affinity chromatography followed by Protein A affinity chromatography

Traits: Liquid

Concentration: 0.5mg/ml

UOM: 100µl

Cross Reactivity: Rat

Applications: WB; IHC; ICC; IP.

[IMMUNOGEN]

Immunogen: Recombinant HSP90aA1 (Met1~Gly496 linked with Ile698~Asp732) expressed in *E.coli*

Accession No.: RPD523Hu01

[APPLICATIONS]

Western blotting: 0.01-2µg/mL;

Immunohistochemistry: 5-20µg/mL;

Immunocytochemistry: 5-20µg/mL;

Optimal working dilutions must be determined by end user.

[FORMULATION]

Form & Buffer: Supplied as solution form in PBS, pH7.4, containing 0.02% NaN₃, 50% glycerol.

[STORAGE AND STABILITY]

Storage: Avoid repeated freeze/thaw cycles.

Store at 4°C for frequent use.

Aliquot and store at -20°C for 24 months.

Stability Test: The thermal stability is described by the loss rate. The loss rate was determined

by accelerated thermal degradation test, that is, incubate the protein at 37°C for 48h, and no obvious degradation and precipitation were observed. The loss rate is less than 5% within the expiration date under appropriate storage condition.

[IDENTIFICATION]

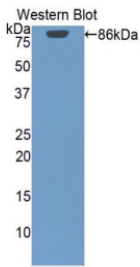
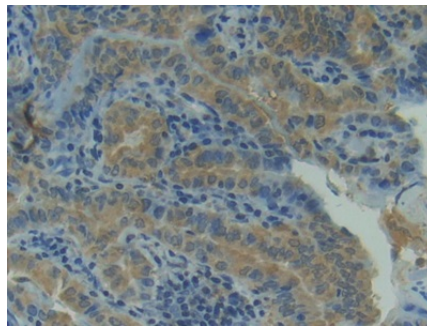
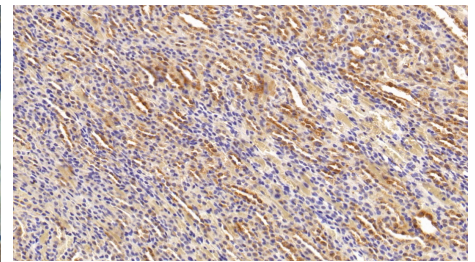


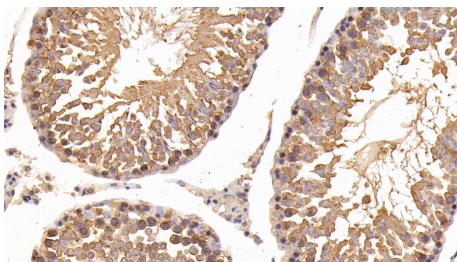
Figure. Western Blot; Sample: Recombinant HSP90aA1, Human.



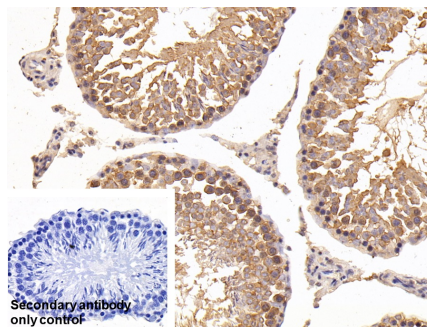
DAB staining on IHC-P;
Samples: Human Thyroid cancer Tissue;
Primary Ab: 20µg/ml Rabbit Anti-Human HSP90aA1 Antibody
Second Ab: 2µg/mL HRP-Linked Caprine Anti-Rabbit IgG Polyclonal Antibody
(Catalog: SAA544Rb19)



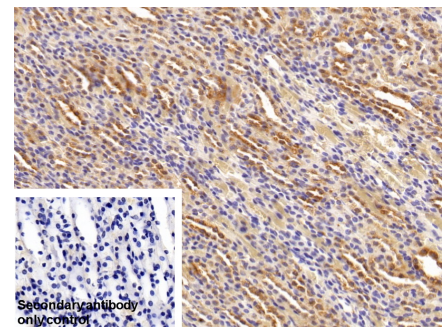
DAB staining on IHC-P;
Sample: Rat Kidney Tissue;
Primary Ab: 20µg/ml Rabbit Anti-Human HSP90aA1 Antibody
Second Ab: 2µg/mL HRP-Linked Caprine Anti-Rabbit IgG Polyclonal Antibody
(Catalog: SAA544Rb19)



DAB staining on IHC-P;
Sample: Rat Testis Tissue;
Primary Ab: 20µg/ml Rabbit Anti-Human HSP90aA1 Antibody
Second Ab: 2µg/mL HRP-Linked Caprine Anti-Rabbit IgG Polyclonal Antibody
(Catalog: SAA544Rb19)

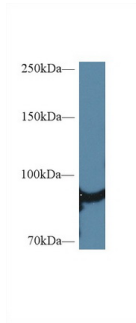


DAB staining on IHC-P;
Sample: Rat Testis Tissue
Primary Ab: 20µg/ml Rabbit Anti-Human HSP90aA1 Antibody
Control: Used PBS instead of primary antibody
Second Ab: 2µg/ml HRP-Linked

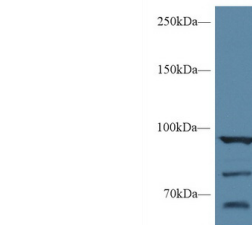


DAB staining on IHC-P;
Sample: Rat Kidney Tissue
Primary Ab: 20µg/ml Rabbit Anti-Human HSP90aA1 Antibody
Control: Used PBS instead of primary antibody
Second Ab: 2µg/ml HRP-Linked

Caprine Anti-Rabbit IgG Polyclonal
Antibody
(Catalog: SAA544Rb19)

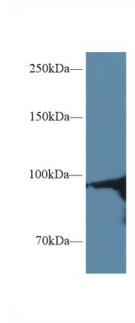


Western Blot; Sample: Rat Heart lysate;
Primary Ab: 1µg/ml Rabbit Anti-Human
HSP90aA1 Antibody
Second Ab: 0.2µg/mL HRP-Linked
Caprine Anti-Rabbit IgG Polyclonal
Antibody
(Catalog: SAA544Rb19)

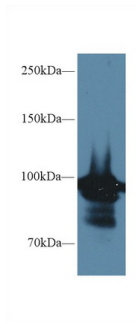


Western Blot; Sample: Human Liver
lysate;
Primary Ab: 1µg/ml Rabbit Anti-Human
HSP90aA1 Antibody
Second Ab: 0.2µg/mL HRP-Linked
Caprine Anti-Rabbit IgG Polyclonal
Antibody
(Catalog: SAA544Rb19)

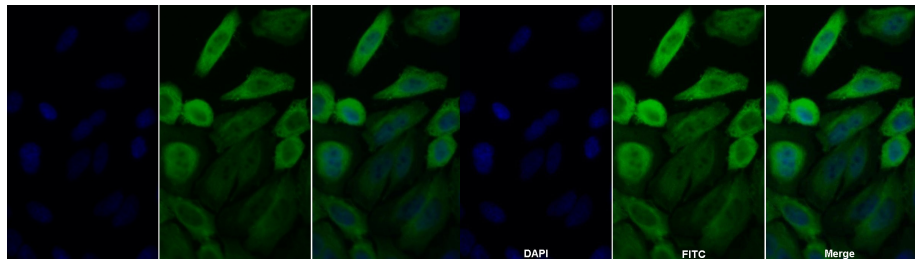
Caprine Anti-Rabbit IgG Polyclonal
Antibody
(Catalog: SAA544Rb19)



Western Blot; Sample: Human Lung
lysate;
Primary Ab: 1µg/ml Rabbit Anti-Human
HSP90aA1 Antibody
Second Ab: 0.2µg/mL HRP-Linked
Caprine Anti-Rabbit IgG Polyclonal
Antibody
(Catalog: SAA544Rb19)



Western Blot; Sample: Rat Cerebrum
lysate;
Primary Ab: 1µg/ml Rabbit Anti-Human
HSP90aA1 Antibody
Second Ab: 0.2µg/mL HRP-Linked
Caprine Anti-Rabbit IgG Polyclonal
Antibody
(Catalog: SAA544Rb19)



FITC staining on IF;
Sample: Human HepG2 cell;
Primary Ab: 20ug/ml Rabbit Anti-
Human HSP90aA1 Antibody
Second Ab: 2µg/ml FITC-Linked
Caprine Anti-Rabbit IgG Polyclonal
Antibody
(Catalog: SAA544Rb18)

FITC staining on IF;
Sample: HepG2 cell
Primary Ab: 20µg/ml Rabbit Anti-
Human HSP90aA1 Antibody
Second Ab: 2µg/ml FITC-Linked
Caprine Anti-Rabbit IgG Polyclonal
Antibody
(Catalog: SAA544Rb11)

[IMPORTANT NOTE]

The kit is designed for research use only, we will not be responsible for any issue if the kit was used in clinical diagnostic or any other procedures.