

PAB409Bo02

Polyclonal Antibody to Hemoglobin (HB)

Organism Species: *Bos taurus*; Bovine (Cattle)

Instruction manual

FOR RESEARCH USE ONLY

NOT FOR USE IN CLINICAL DIAGNOSTIC PROCEDURES

13th Edition (Revised in Aug, 2023)

[PROPERTIES]

Source: Polyclonal antibody preparation

Host: Rabbit

Purification: Antigen-specific affinity chromatography followed by Protein A affinity chromatography

Traits: Liquid

Concentration: 0.5mg/ml

UOM: 100µl

Cross Reactivity: Human

Applications: WB; IHC

[IMMUNOGEN]

Immunogen: Native HB

Accession No.: NPB409Bo01

[APPLICATIONS]

Western blotting: 0.01-2µg/mL;

Immunohistochemistry: 5-20µg/mL;

Optimal working dilutions must be determined by end user.

[FORMULATION]

Form & Buffer: Supplied as solution form in 0.01M PBS, pH7.4, containing 0.05% Proclin-300, 50% glycerol.

[STORAGE AND STABILITY]

Storage: Avoid repeated freeze/thaw cycles.

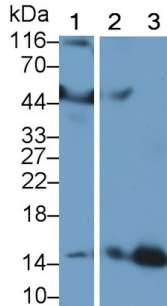
Store at 4°C for frequent use.

Aliquot and store at -20°C for 24 months.

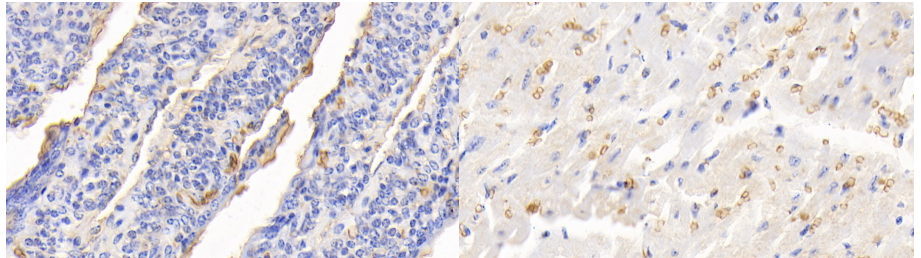
Stability Test: The thermal stability is described by the loss rate. The loss rate was determined by accelerated thermal degradation test, that is, incubate the protein at 37°C for 48h, and no obvious degradation and precipitation were observed. The loss rate is less than 5% within the

expiration date under appropriate storage condition.

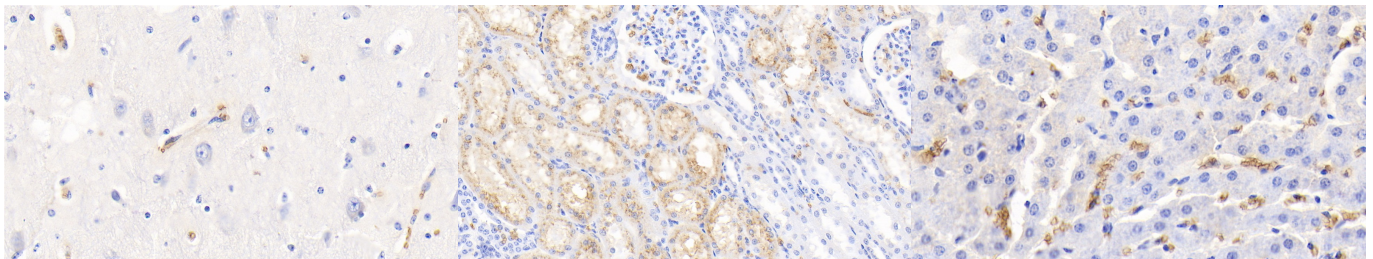
[IDENTIFICATION]



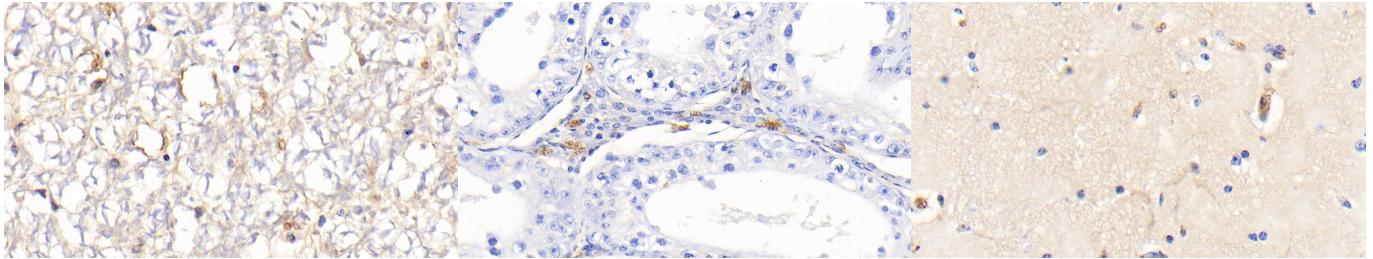
Western Blot; Sample: Lane1: Human Serum; Lane2: Human Plasma; Lane3: Human Blood Cells lysate Primary Ab: 0.2µg/ml Rabbit Anti-Bovine HB Antibody Second Ab: 0.2µg/mL HRP-Linked Caprine Anti-Rabbit IgG Polyclonal Antibody (Catalog: SAA544Rb19)



DAB staining on IHC-P; Sample: Bovine Small intestine Tissue; Primary Ab: 20µg/ml Rabbit Anti-Bovine HB Antibody Second Ab: 2µg/mL HRP-Linked Caprine Anti-Rabbit IgG Polyclonal Antibody (Catalog: SAA544Rb19) DAB staining on IHC-P; Sample: Bovine Cardiac Muscle Tissue; Primary Ab: 20µg/ml Rabbit Anti-Bovine HB Antibody Second Ab: 2µg/mL HRP-Linked Caprine Anti-Rabbit IgG Polyclonal Antibody (Catalog: SAA544Rb19)



DAB staining on IHC-P; Sample: Bovine Cerebrum Tissue; Primary Ab: 20µg/ml Rabbit Anti-Bovine HB Antibody Second Ab: 2µg/mL HRP-Linked Caprine Anti-Rabbit IgG Polyclonal Antibody (Catalog: SAA544Rb19) DAB staining on IHC-P; Sample: Bovine Kidney Tissue; Primary Ab: 20µg/ml Rabbit Anti-Bovine HB Antibody Second Ab: 2µg/mL HRP-Linked Caprine Anti-Rabbit IgG Polyclonal Antibody (Catalog: SAA544Rb19) DAB staining on IHC-P; Sample: Bovine Liver Tissue; Primary Ab: 20µg/ml Rabbit Anti-Bovine HB Antibody Second Ab: 2µg/mL HRP-Linked Caprine Anti-Rabbit IgG Polyclonal Antibody (Catalog: SAA544Rb19)



DAB staining on IHC-P;

Sample: Bovine Spinal cord Tissue;

Primary Ab: 20µg/ml Rabbit Anti-Bovine

HB Antibody

Second Ab: 2µg/mL HRP-Linked

Caprine Anti-Rabbit IgG Polyclonal
Antibody

(Catalog: SAA544Rb19)

DAB staining on IHC-P;

Sample: Bovine Testis Tissue;

Primary Ab: 20µg/ml Rabbit Anti-Bovine

HB Antibody

Second Ab: 2µg/mL HRP-Linked

Caprine Anti-Rabbit IgG Polyclonal
Antibody

(Catalog: SAA544Rb19)

DAB staining on IHC-P;

Sample: Bovine Cerebellum Tissue;

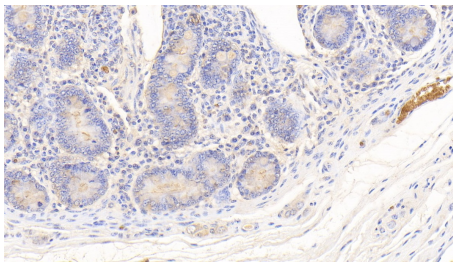
Primary Ab: 20µg/ml Rabbit Anti-Bovine

HB Antibody

Second Ab: 2µg/mL HRP-Linked

Caprine Anti-Rabbit IgG Polyclonal
Antibody

(Catalog: SAA544Rb19)



DAB staining on IHC-P;

Sample: Bovine Colon Tissue;

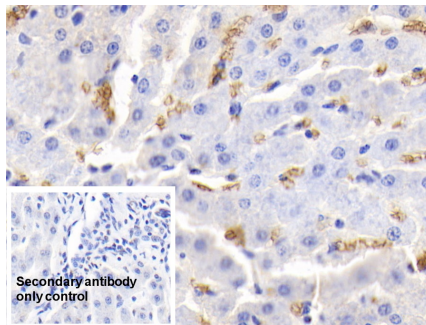
Primary Ab: 20µg/ml Rabbit Anti-Bovine

HB Antibody

Second Ab: 2µg/mL HRP-Linked

Caprine Anti-Rabbit IgG Polyclonal
Antibody

(Catalog: SAA544Rb19)



DAB staining on IHC-P;

Sample: Bovine Liver Tissue

Primary Ab: 20µg/ml Rabbit Anti-Bovine

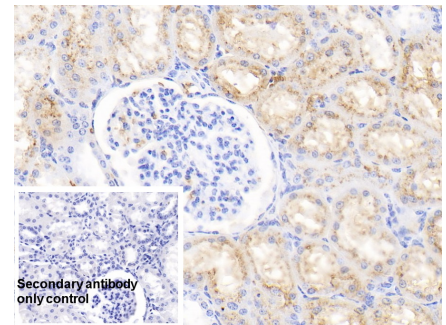
HB Antibody

Control: Used PBS instead of primary
antibody

Second Ab: 2µg/ml HRP-Linked

Caprine Anti-Rabbit IgG Polyclonal
Antibody

(Catalog: SAA544Rb19)



DAB staining on IHC-P;

Sample: Bovine Kidney Tissue

Primary Ab: 20µg/ml Rabbit Anti-Bovine

HB Antibody

Control: Used PBS instead of primary
antibody

Second Ab: 2µg/ml HRP-Linked

Caprine Anti-Rabbit IgG Polyclonal
Antibody

(Catalog: SAA544Rb19)

[**IMPORTANT NOTE**]

The kit is designed for research use only, we will not be responsible for any issue if the kit was

used in clinical diagnostic or any other procedures.