

PAD090Mu01

Polyclonal Antibody to Hemoglobin Alpha 1 (HBa1)

Organism Species: *Mus musculus* (Mouse)

Instruction manual

FOR RESEARCH USE ONLY

NOT FOR USE IN CLINICAL DIAGNOSTIC PROCEDURES

13th Edition (Revised in Aug, 2023)

[PROPERTIES]

Source: Polyclonal antibody preparation

Host: Rabbit

Purification: Antigen-specific affinity chromatography followed by Protein A affinity chromatography

Traits: Liquid

Concentration: 0.5mg/mL

UOM: 100µL

Cross Reactivity: N/A

Applications: WB; IHC

[IMMUNOGEN]

Immunogen: Recombinant HBa1 (Met1~Arg142) expressed in *E.coli*

Accession No.: RPD090Mu01

[APPLICATIONS]

Western blotting: 0.01-3µg/mL;

Immunohistochemistry: 5-30µg/mL;

Optimal working dilutions must be determined by end user.

[FORMULATION]

Form & Buffer: Supplied as solution form in 0.01M PBS, pH7.4, containing 0.05% Proclin-300, 50% glycerol.

[STORAGE AND STABILITY]

Storage: Avoid repeated freeze/thaw cycles.

Store at 4°C for frequent use.

Aliquot and store at -20°C for 24 months.

Stability Test: The thermal stability is described by the loss rate. The loss rate was determined by accelerated thermal degradation test, that is, incubate the protein at 37°C for 48h, and no obvious degradation and precipitation were observed. The loss rate is less than 5% within the

expiration date under appropriate storage condition.

[IDENTIFICATION]

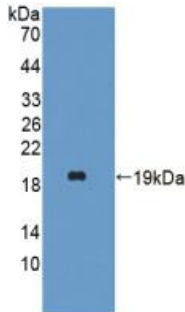
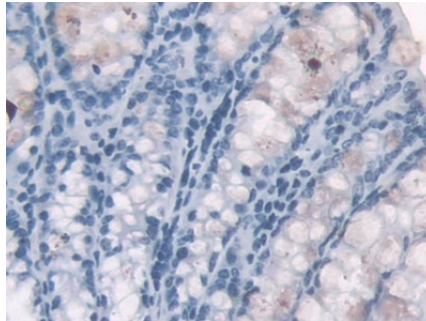
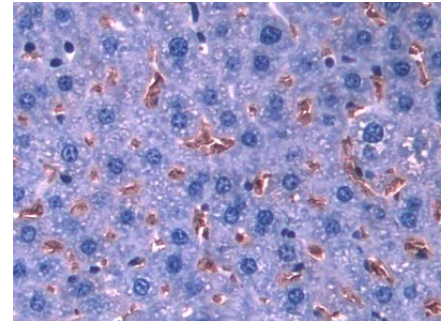


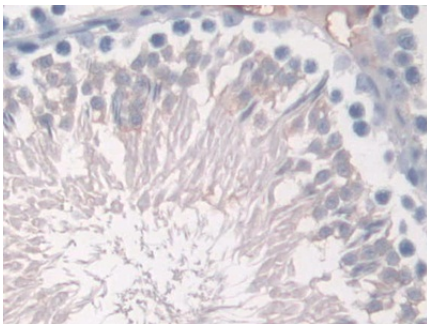
Figure. Western Blot; Sample: Recombinant HBa1, Mouse.



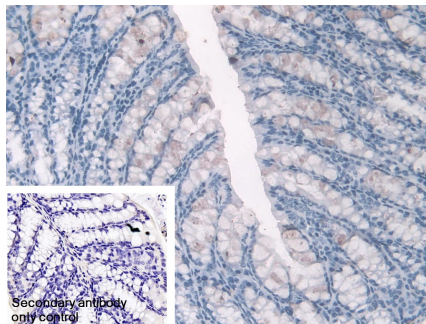
DAB staining on IHC-P; Samples: Mouse Colon Tissue; Primary Ab: 30µg/ml Rabbit Anti-Mouse HBa1 Antibody Second Ab: 2µg/mL HRP-Linked Caprine Anti-Rabbit IgG Polyclonal Antibody (Catalog: SAA544Rb19)



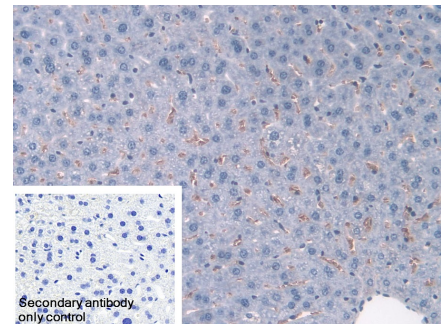
DAB staining on IHC-P; Samples: Mouse Liver Tissue; Primary Ab: 30µg/ml Rabbit Anti-Mouse HBa1 Antibody Second Ab: 2µg/mL HRP-Linked Caprine Anti-Rabbit IgG Polyclonal Antibody (Catalog: SAA544Rb19)



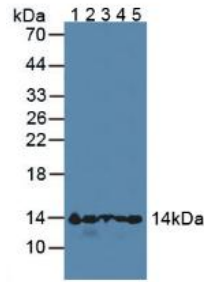
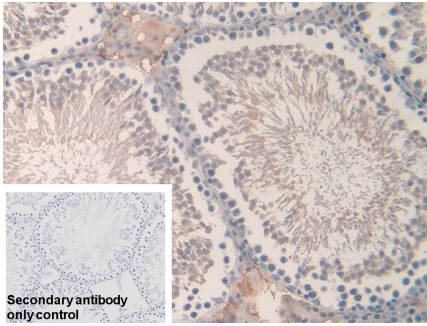
DAB staining on IHC-P; Samples: Mouse Testis Tissue; Primary Ab: 30µg/ml Rabbit Anti-Mouse HBa1 Antibody Second Ab: 2µg/mL HRP-Linked Caprine Anti-Rabbit IgG Polyclonal Antibody (Catalog: SAA544Rb19)



DAB staining on IHC-P; Sample: Mouse Colon Tissue Primary Ab: 30µg/ml Rabbit Anti-Mouse HBa1 Antibody Control: Used PBS instead of primary antibody Second Ab: 2µg/ml HRP-Linked Caprine Anti-Rabbit IgG Polyclonal Antibody (Catalog: SAA544Rb19)



DAB staining on IHC-P; Sample: Mouse Liver Tissue Primary Ab: 30µg/ml Rabbit Anti-Mouse HBa1 Antibody Control: Used PBS instead of primary antibody Second Ab: 2µg/ml HRP-Linked Caprine Anti-Rabbit IgG Polyclonal Antibody (Catalog: SAA544Rb19)



DAB staining on IHC-P;	Western Blot; Sample: Lane1: Mouse
Sample: Mouse Testis Tissue	Serum; Lane2: Mouse Liver lysate;
Primary Ab: 30µg/ml Rabbit Anti-Mouse	Lane3: Mouse Cerebrum lysate; Lane4:
HBa1 Antibody	Mouse Heart lysate; Lane5: Mouse
Control: Used PBS instead of primary	Spleen lysate
antibody	Primary Ab: 2µg/ml Rabbit Anti-Mouse
Second Ab: 2µg/ml HRP-Linked	HBa1 Antibody
Caprine Anti-Rabbit IgG Polyclonal	Second Ab: 0.2µg/mL HRP-Linked
Antibody	Caprine Anti-Rabbit IgG Polyclonal
(Catalog: SAA544Rb19)	Antibody
	(Catalog: SAA544Rb19)

[IMPORTANT NOTE]

The kit is designed for research use only, we will not be responsible for any issue if the kit was used in clinical diagnostic or any other procedures.