

PAC748Hu01

Polyclonal Antibody to Heparan Sulfate Proteoglycan 2 (HSPG2)

Organism Species: *Homo sapiens* (Human)

Instruction manual

FOR RESEARCH USE ONLY

NOT FOR USE IN CLINICAL DIAGNOSTIC PROCEDURES

13th Edition (Revised in Aug, 2023)

[PROPERTIES]

Source: Polyclonal antibody preparation

Host: Rabbit

Purification: Antigen-specific affinity chromatography followed by Protein A affinity chromatography

Traits: Liquid

Concentration: 0.5mg/mL

UOM: 100µl

Cross Reactivity: Mouse;Rat;Porcine

Applications: WB,IHC,ICC/IF

[IMMUNOGEN]

Immunogen: Recombinant HSPG2 (Leu4149~Ser4391) expressed in *E.coli*

Accession No.: RPC748Hu01

[APPLICATIONS]

Western blotting: 0.01-5µg/mL;

Immunohistochemistry: 5-20µg/mL;

Immunofluorescence:5-30µg/mL;

Optimal working dilutions must be determined by end user.

[FORMULATION]

Form & Buffer: Supplied as solution form in 0.01M PBS, pH7.4, containing 0.05% Proclin-300, 50% glycerol.

[STORAGE AND STABILITY]

Storage: Avoid repeated freeze/thaw cycles.

Store at 4°C for frequent use.

Aliquot and store at -20°C for 24 months.

Stability Test: The thermal stability is described by the loss rate. The loss rate was determined by accelerated thermal degradation test, that is, incubate the protein at 37°C for 48h, and no

obvious degradation and precipitation were observed. The loss rate is less than 5% within the expiration date under appropriate storage condition.

[IDENTIFICATION]

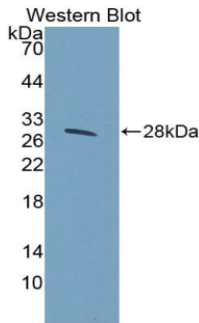
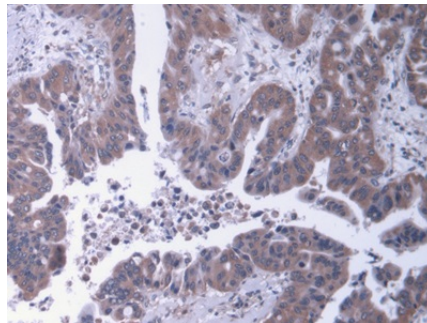
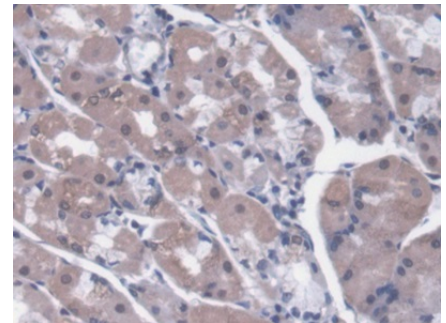


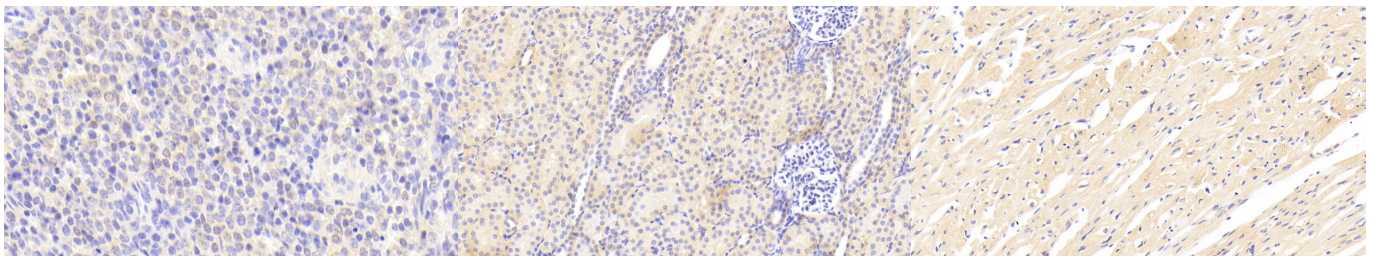
Figure. Western Blot; Sample: Recombinant HSPG2, Human.



DAB staining on IHC-P; Samples: Human Liver cancer Tissue; Primary Ab: 20µg/ml Rabbit Anti-Human HSPG2 Antibody Second Ab: 2µg/mL HRP-Linked Caprine Anti-Rabbit IgG Polyclonal Antibody (Catalog: SAA544Rb19)



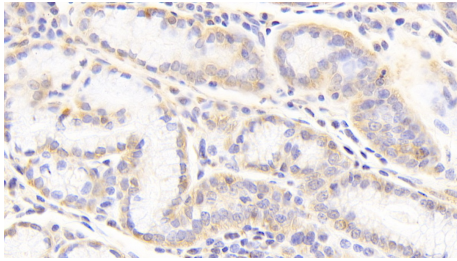
DAB staining on IHC-P; Samples: Human Stomach Tissue; Primary Ab: 20µg/ml Rabbit Anti-Human HSPG2 Antibody Second Ab: 2µg/mL HRP-Linked Caprine Anti-Rabbit IgG Polyclonal Antibody (Catalog: SAA544Rb19)



DAB staining on IHC-P; Samples: Porcine Spleen Tissue; Primary Ab: 20µg/ml Rabbit Anti-Human HSPG2 Antibody Second Ab: 2µg/mL HRP-Linked Caprine Anti-Rabbit IgG Polyclonal Antibody (Catalog: SAA544Rb19)

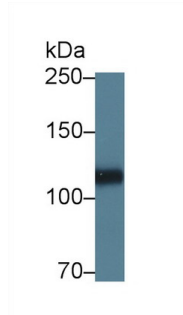
DAB staining on IHC-P; Samples: Porcine Kidney Tissue; Primary Ab: 20µg/ml Rabbit Anti-Human HSPG2 Antibody Second Ab: 2µg/mL HRP-Linked Caprine Anti-Rabbit IgG Polyclonal Antibody (Catalog: SAA544Rb19)

DAB staining on IHC-P; Samples: Porcine Cardiac Muscle Tissue; Primary Ab: 20µg/ml Rabbit Anti-Human HSPG2 Antibody Second Ab: 2µg/mL HRP-Linked Caprine Anti-Rabbit IgG Polyclonal Antibody (Catalog: SAA544Rb19)

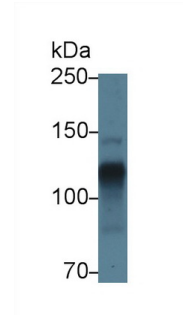


DAB staining on IHC-P;

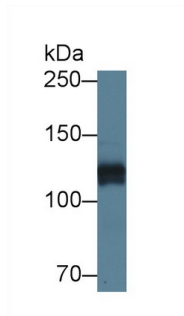
Samples: Porcine Stomach Tissue;
 Primary Ab: 20µg/ml Rabbit Anti-Human HSPG2 Antibody
 Second Ab: 2µg/mL HRP-Linked Caprine Anti-Rabbit IgG Polyclonal Antibody
 (Catalog: SAA544Rb19)



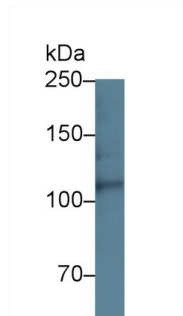
Western Blot; Sample: Porcine Heart lysate;
 Primary Ab: 5µg/ml Rabbit Anti-Human HSPG2 Antibody
 Second Ab: 0.2µg/mL HRP-Linked Caprine Anti-Rabbit IgG Polyclonal Antibody
 (Catalog: SAA544Rb19)



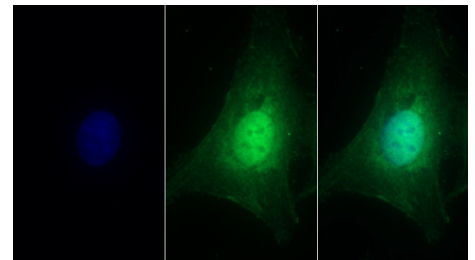
Western Blot; Sample: Rat Heart lysate;
 Primary Ab: 5µg/ml Rabbit Anti-Human HSPG2 Antibody
 Second Ab: 0.2µg/mL HRP-Linked Caprine Anti-Rabbit IgG Polyclonal Antibody
 (Catalog: SAA544Rb19)



Western Blot; Sample: Mouse Heart lysate;
 Primary Ab: 5µg/ml Rabbit Anti-Human HSPG2 Antibody
 Second Ab: 0.2µg/mL HRP-Linked Caprine Anti-Rabbit IgG Polyclonal Antibody
 (Catalog: SAA544Rb19)



Western Blot; Sample: Mouse Lung lysate;
 Primary Ab: 5µg/ml Rabbit Anti-Human HSPG2 Antibody
 Second Ab: 0.2µg/mL HRP-Linked Caprine Anti-Rabbit IgG Polyclonal Antibody
 (Catalog: SAA544Rb19)



FITC staining on IF;
 Sample: Human U2OS cell;
 Primary Ab: 30µg/ml Rabbit Anti-Human HSPG2 Antibody
 Second Ab: 2µg/ml FITC-Linked Caprine Anti-Rabbit IgG Polyclonal Antibody
 (Catalog: SAA544Rb18)

[IMPORTANT NOTE]

The kit is designed for research use only, we will not be responsible for any issue if the kit was used in clinical diagnostic or any other procedures.