

**PAS091Mu01**

**Polyclonal Antibody to Histone (H)**

**Organism Species: *Mus musculus* (Mouse)**

***Instruction manual***

FOR RESEARCH USE ONLY

NOT FOR USE IN CLINICAL DIAGNOSTIC PROCEDURES

---

13th Edition (Revised in Aug, 2023)

**[ PROPERTIES ]**

**Source:** Polyclonal antibody preparation

**Host:** Rabbit

**Purification:** Antigen-specific affinity chromatography followed by Protein A affinity chromatography

**Traits:** Liquid

**Concentration:** 0.37mg/mL

**UOM:** 10 $\mu$ L

**Cross Reactivity:** N/A

**Applications:** WB; IHC; ICC; IP.

**[ IMMUNOGEN ]**

**Immunogen:** Recombinant Histone (Met1~Ala136) expressed in

**Accession No.:** RPA285Mu01

**[ APPLICATIONS ]**

Western blotting: 0.005-2 $\mu$ g/mL

Immunohistochemistry: 5-20 $\mu$ g/mL

Immunocytochemistry: 5-20 $\mu$ g/mL

Optimal working dilutions must be determined by end user.

**[ FORMULATION ]**

**Form & Buffer:** Supplied as solution form in 0.01M PBS, pH7.4, containing 0.05% Proclin-300, 50% glycerol.

**[ STORAGE AND STABILITY ]**

**Storage:** Avoid repeated freeze/thaw cycles.

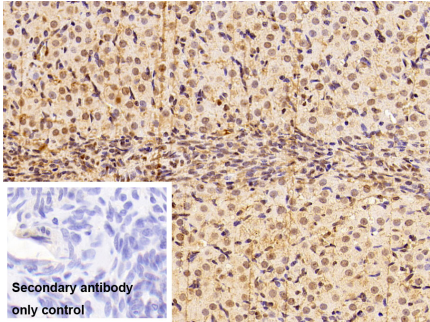
Store at 4°C for frequent use.

Aliquot and store at -20°C for 24 months.

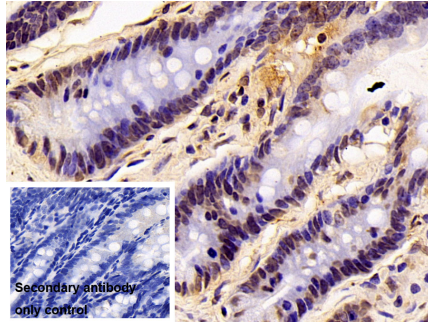
**Stability Test:** The thermal stability is described by the loss rate. The loss rate was determined by accelerated thermal degradation test, that is, incubate the protein at 37°C for 48h, and no

obvious degradation and precipitation were observed. The loss rate is less than 5% within the expiration date under appropriate storage condition.

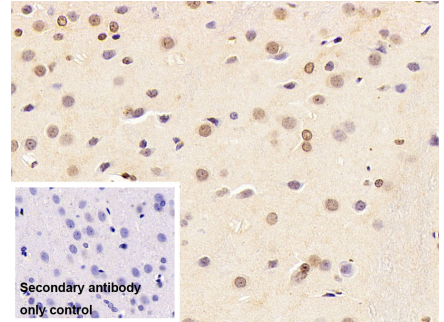
**[ IDENTIFICATION ]**



DAB staining on IHC-P;  
Sample: Rat Ovary Tissue



DAB staining on IHC-P;  
Sample: Rat Colon Tissue



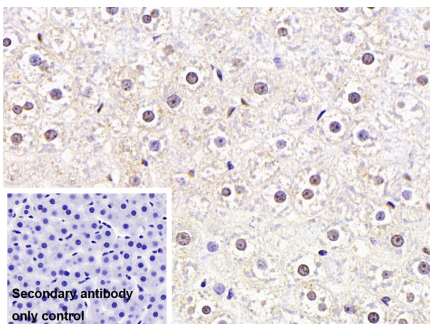
DAB staining on IHC-P;  
Sample: Rat Cerebrum Tissue

Primary Ab: 10µg/ml Rabbit Anti-Mouse HIS Antibody

Control: Used PBS instead of primary antibody

Second Ab: 2?g/ml HRP-Linked Caprine Anti-Rabbit IgG Polyclonal Antibody

(Catalog: SAA544Rb19)

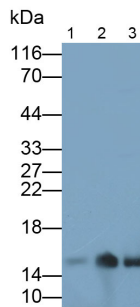


DAB staining on IHC-P;  
Sample: Rat Liver Tissue

Primary Ab: 10µg/ml Rabbit Anti-Mouse HIS Antibody

Control: Used PBS instead of primary antibody

Second Ab: 2?g/ml HRP-Linked



Western Blot; Samples: Lane1: Mouse Liver lysate; Lane2: Mouse Kidney

Primary Ab: 0.005µg/ml Rabbit Anti-Mouse HIS Antibody

Second Ab: 0.2?g/ml HRP-Linked Caprine Anti-Rabbit IgG Polyclonal

Caprine Anti-Rabbit IgG Polyclonal

Antibody

(Catalog: SAA544Rb19)

Antibody

(Catalog: SAA544Rb19)

**[ IMPORTANT NOTE ]**

The kit is designed for research use only, we will not be responsible for any issue if the kit was used in clinical diagnostic or any other procedures.