

**PAA285Bo01**

**Polyclonal Antibody to Histone H3 (H3)**

**Organism Species: *Bos taurus*; Bovine (Cattle)**

***Instruction manual***

FOR RESEARCH USE ONLY

NOT FOR USE IN CLINICAL DIAGNOSTIC PROCEDURES

---

12th Edition (Revised in Aug, 2016)

**[ PROPERTIES ]**

**Source:** Polyclonal antibody preparation

**Host:** Rabbit

**Purification:** Antigen-specific affinity chromatography followed by Protein A affinity chromatography

**Traits:** Liquid

**Concentration:** 0.5mg/ml

**UOM:** 100µl

**Cross Reactivity:** Mouse;Rat

**Applications:** WB; IHC; ICC; IP.

**[ IMMUNOGEN ]**

**Immunogen:** Recombinant Histone H3 (Met1~Ala136) expressed in E.coli.

**Accession No.:** RPA285Mi01

**[ APPLICATIONS ]**

Western blotting: 0.5-2µg/mL;

Immunohistochemistry: 5-20µg/mL;

Immunocytochemistry: 5-20µg/mL;

Optimal working dilutions must be determined by end user.

**[ FORMULATION ]**

**Form & Buffer:** Supplied as solution form in 0.01M PBS, pH7.4, containing 0.05% Proclin-300, 50% glycerol.

**[ STORAGE AND STABILITY ]**

**Storage:** Avoid repeated freeze/thaw cycles.

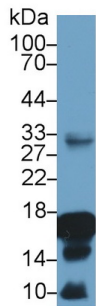
Store at 4°C for frequent use.

Aliquot and store at -20°C for 24 months.

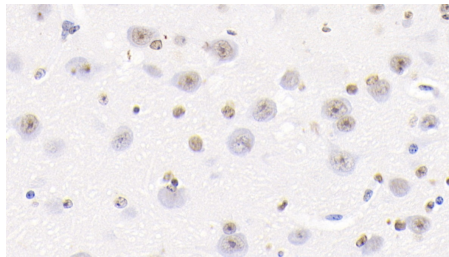
**Stability Test:** The thermal stability is described by the loss rate. The loss rate was determined by accelerated thermal degradation test, that is, incubate the protein at 37°C for 48h, and no

obvious degradation and precipitation were observed. The loss rate is less than 5% within the expiration date under appropriate storage condition.

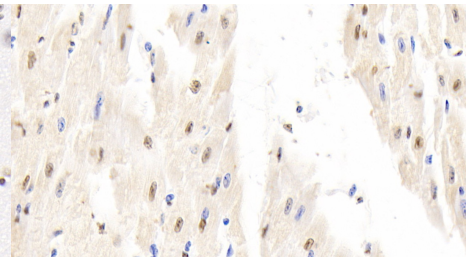
**[ IDENTIFICATION ]**



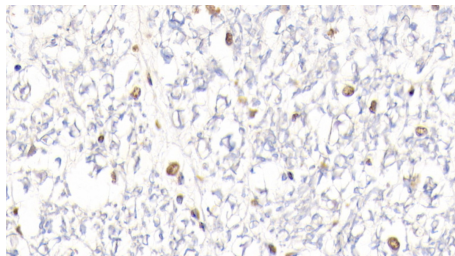
Western Blot; Sample: Rat Spleen lysate; Primary Ab: 1µg/ml Rabbit Anti-Bovine H3 Antibody Second A



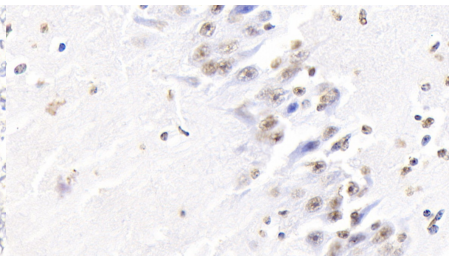
DAB staining on IHC-P; Samples: Bovine Cerebrum Tissue; Primary Ab: 20?g/ml Rabbit Anti-Bovine H3 Antibody Second Ab: 2µg/mL HRP-Linked Caprine Anti-Rabbit IgG Polyclonal Antibody (Catalog: SAA544Rb19)



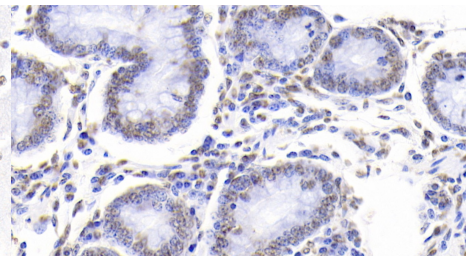
DAB staining on IHC-P; Samples: Bovine Cardiac Muscle Tissue; Primary Ab: 20?g/ml Rabbit Anti-Bovine H3 Antibody Second Ab: 2µg/mL HRP-Linked Caprine Anti-Rabbit IgG Polyclonal Antibody (Catalog: SAA544Rb19)



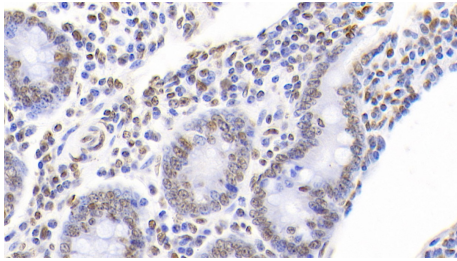
DAB staining on IHC-P; Samples: Bovine Spinal cord Tissue; Primary Ab: 20?g/ml Rabbit Anti-Bovine H3 Antibody Second Ab: 2µg/mL HRP-Linked Caprine Anti-Rabbit IgG Polyclonal Antibody (Catalog: SAA544Rb19)



DAB staining on IHC-P; Samples: Bovine Cerebellum Tissue; Primary Ab: 20?g/ml Rabbit Anti-Bovine H3 Antibody Second Ab: 2µg/mL HRP-Linked Caprine Anti-Rabbit IgG Polyclonal Antibody (Catalog: SAA544Rb19)

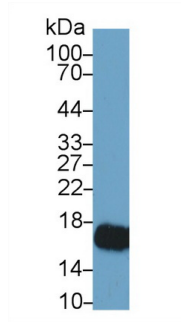


DAB staining on IHC-P; Samples: Bovine Small intestine Tissue; Primary Ab: 20?g/ml Rabbit Anti-Bovine H3 Antibody Second Ab: 2µg/mL HRP-Linked Caprine Anti-Rabbit IgG Polyclonal Antibody (Catalog: SAA544Rb19)

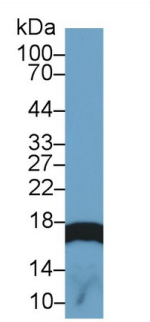


DAB staining on IHC-P;

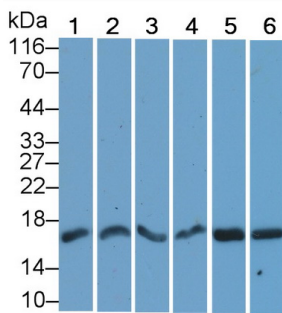
Samples: Bovine Colon Tissue;  
 Primary Ab: 20 $\mu$ g/ml Rabbit Anti-Bovine  
 H3 Antibody  
 Second Ab: 2 $\mu$ g/mL HRP-Linked  
 Caprine Anti-Rabbit IgG Polyclonal  
 Antibody  
 (Catalog: SAA544Rb19)



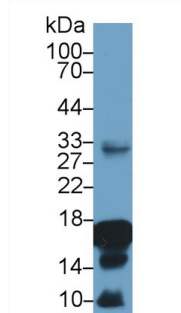
Western Blot; Sample: Mouse  
 Cerebrum lysate;  
 Primary Ab: 1 $\mu$ g/ml Rabbit Anti-Bovine  
 H3 Antibody  
 Second Ab: 0.2 $\mu$ g/mL HRP-Linked  
 Caprine Anti-Rabbit IgG Polyclonal  
 Antibody  
 (Catalog: SAA544Rb19)



Western Blot; Sample: Rat Cerebrum  
 lysate;  
 Primary Ab: 1 $\mu$ g/ml Rabbit Anti-Bovine  
 H3 Antibody  
 Second Ab: 0.2 $\mu$ g/mL HRP-Linked  
 Caprine Anti-Rabbit IgG Polyclonal  
 Antibody  
 (Catalog: SAA544Rb19)



Western Blot; Sample: Lane1: Rat Liver  
 lysate; Lane2: Rat Kidney lysate;  
 Lane3: Rat Stomach lysate; Lane4:  
 Mouse Liver lysate; Lane5: Mouse  
 Kidney lysate; Lane6: Mouse Stomach  
 lysate  
 Primary Ab: 0.05 $\mu$ g/ml Rabbit Anti-  
 Bovine H3 Antibody  
 Second Ab: 0.2 $\mu$ g/mL HRP-Linked  
 Caprine Anti-Rabbit IgG Polyclonal  
 Antibody  
 (Catalog: SAA544Rb19)



Western Blot; Sample: Rat Spleen  
 lysate;  
 Primary Ab: 1 $\mu$ g/ml Rabbit Anti-Bovine  
 H3 Antibody  
 Second Ab: 0.2 $\mu$ g/mL HRP-Linked  
 Caprine Anti-Rabbit IgG Polyclonal  
 Antibody  
 (Catalog: SAA544Rb19)

**[ IMPORTANT NOTE ]**

The kit is designed for research use only, we will not be responsible for any issue if the kit was used in clinical diagnostic or any other procedures.