

**PAA285Ra01**

**Polyclonal Antibody to Histone H3 (H3)**

**Organism Species: *Rattus norvegicus* (Rat)**

***Instruction manual***

FOR RESEARCH USE ONLY

NOT FOR USE IN CLINICAL DIAGNOSTIC PROCEDURES

---

13th Edition (Revised in Aug, 2023)

### **[ PROPERTIES ]**

**Source:** Polyclonal antibody preparation

**Host:** Rabbit

**Purification:** Antigen-specific affinity chromatography followed by Protein A affinity chromatography

**Traits:** Liquid

**Concentration:** 0.5mg/ml

**UOM:** 100µl

**Cross Reactivity:** Human

**Applications:** WB; IHC; ICC; IP.

### **[ IMMUNOGEN ]**

**Immunogen:** Recombinant Histone H3 (Met1~Ala136) expressed in *E.coli*

**Accession No.:** RPA285Ra01

### **[ APPLICATIONS ]**

Western blotting: 0.003-1µg/mL;

Immunohistochemistry: 5-20µg/mL;

Immunocytochemistry: 5-20µg/mL;

Optimal working dilutions must be determined by end user.

### **[ FORMULATION ]**

**Form & Buffer:** Supplied as solution form in PBS, pH7.4, containing 0.02% NaN<sub>3</sub>, 50% glycerol.

### **[ STORAGE AND STABILITY ]**

**Storage:** Avoid repeated freeze/thaw cycles.

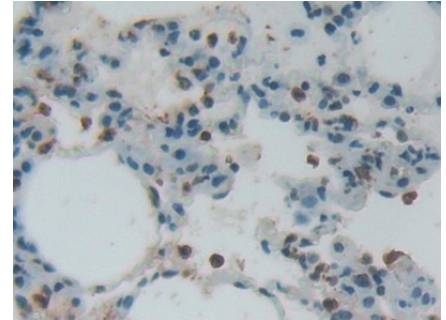
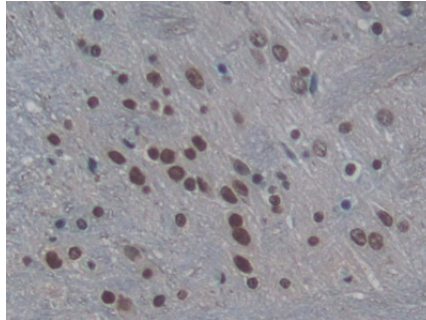
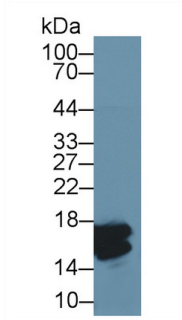
Store at 4°C for frequent use.

Aliquot and store at -20°C for 24 months.

**Stability Test:** The thermal stability is described by the loss rate. The loss rate was determined by accelerated thermal degradation test, that is, incubate the protein at 37°C for 48h, and no

obvious degradation and precipitation were observed. The loss rate is less than 5% within the expiration date under appropriate storage condition.

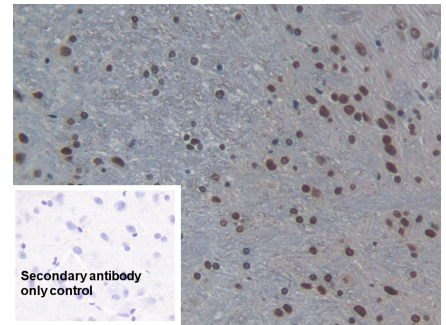
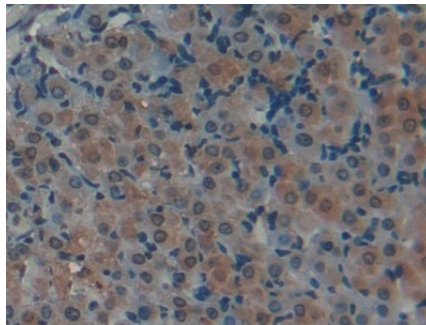
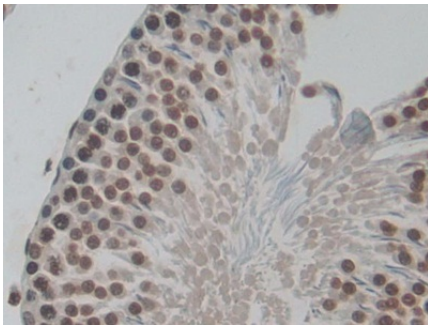
**[ IDENTIFICATION ]**



Western Blot; Sample: Human Hela cell lysate; Primary Ab: 2µg/ml Rabbit Anti-Rat H3 Antibody Second

DAB staining on IHC-P;  
Samples: Rat Cerebrum Tissue;  
Primary Ab: 20µg/ml Rabbit Anti-Rat H3  
Antibody  
Second Ab: 2µg/mL HRP-Linked  
Caprine Anti-Rabbit IgG Polyclonal  
Antibody  
(Catalog: SAA544Rb19)

DAB staining on IHC-P;  
Samples: Rat Lung Tissue;  
Primary Ab: 20µg/ml Rabbit Anti-Rat H3  
Antibody  
Second Ab: 2µg/mL HRP-Linked  
Caprine Anti-Rabbit IgG Polyclonal  
Antibody  
(Catalog: SAA544Rb19)

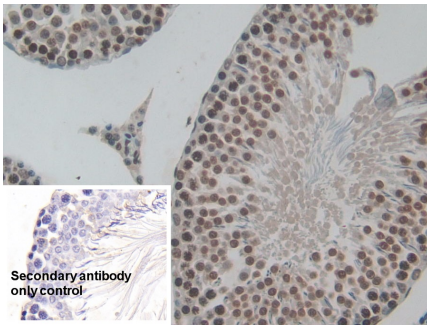


DAB staining on IHC-P;  
Samples: Rat Testis Tissue;  
Primary Ab: 20µg/ml Rabbit Anti-Rat H3  
Antibody  
Second Ab: 2µg/mL HRP-Linked  
Caprine Anti-Rabbit IgG Polyclonal  
Antibody  
(Catalog: SAA544Rb19)

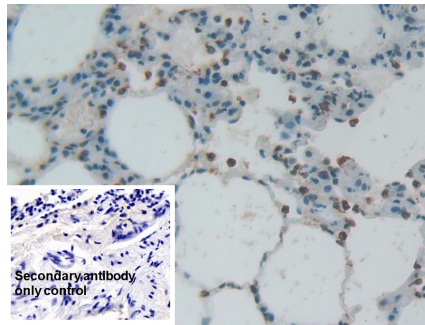
DAB staining on IHC-P;  
Samples: Rat Ovary Tissue;  
Primary Ab: 20µg/ml Rabbit Anti-Rat H3  
Antibody  
Second Ab: 2µg/mL HRP-Linked  
Caprine Anti-Rabbit IgG Polyclonal  
Antibody  
(Catalog: SAA544Rb19)

DAB staining on IHC-P;  
Sample: Rat Cerebrum Tissue  
Primary Ab: 10µg/ml Rabbit Anti-Rat H3  
Antibody  
Control: Used PBS instead of primary  
antibody  
Second Ab: 2µg/ml HRP-Linked  
Caprine Anti-Rabbit IgG Polyclonal  
Antibody

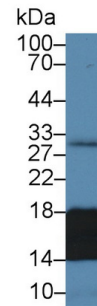
(Catalog: SAA544Rb19)



DAB staining on IHC-P;  
Sample: Rat Testis Tissue



DAB staining on IHC-P;  
Sample: Rat Lung Tissue



Western Blot; Sample: Human Liver lysate;

Primary Ab: 10µg/ml Rabbit Anti-Rat H3Antibody      Primary Ab: 10µg/ml Rabbit Anti-Rat H3Antibody      Primary Ab: 3µg/ml Rabbit Anti-Rat H3Antibody

Control: Used PBS instead of primary antibody

Control: Used PBS instead of primary antibody

Second Ab: 0.2µg/mL HRP-Linked Caprine Anti-Rabbit IgG Polyclonal Antibody

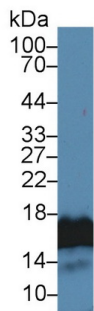
Second Ab: 2µg/ml HRP-Linked Caprine Anti-Rabbit IgG Polyclonal Antibody

Second Ab: 2µg/ml HRP-Linked Caprine Anti-Rabbit IgG Polyclonal Antibody

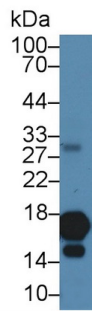
(Catalog: SAA544Rb19)

(Catalog: SAA544Rb19)

(Catalog: SAA544Rb19)



Western Blot; Sample: Human Lung lysate;



Western Blot; Sample: Human Cartilage lysate;



Western Blot; Sample: Rat Bone marrow lysate;

Primary Ab: 3µg/ml Rabbit Anti-Rat H3Antibody      Primary Ab: 3µg/ml Rabbit Anti-Rat H3Antibody      Primary Ab: 2µg/ml Rabbit Anti-Rat H3Antibody

Second Ab: 0.2µg/mL HRP-Linked Caprine Anti-Rabbit IgG Polyclonal Antibody

Second Ab: 0.2µg/mL HRP-Linked Caprine Anti-Rabbit IgG Polyclonal Antibody

Second Ab: 0.2µg/mL HRP-Linked Caprine Anti-Rabbit IgG Polyclonal Antibody

(Catalog: SAA544Rb19)

(Catalog: SAA544Rb19)

(Catalog: SAA544Rb19)

**[ IMPORTANT NOTE ]**

The kit is designed for research use only, we will not be responsible for any issue if the kit was used in clinical diagnostic or any other procedures.