

**PAA798Hu01**

**Polyclonal Antibody to Hypoxia Inducible Factor 1 Alpha (HIF1a)**

**Organism Species: *Homo sapiens (Human)***

***Instruction manual***

FOR RESEARCH USE ONLY

NOT FOR USE IN CLINICAL DIAGNOSTIC PROCEDURES

---

13th Edition (Revised in Aug, 2023)

### [ **PROPERTIES** ]

**Source:** Polyclonal antibody preparation

**Host:** Rabbit

**Purification:** Antigen-specific affinity chromatography followed by Protein A affinity chromatography

**Traits:** Liquid

**Concentration:** 0.35mg/mL

**UOM:** 100µL

**Cross Reactivity:** Mouse;Porcine

**Applications:** WB; IHC; ICC; IP.

### [ **IMMUNOGEN** ]

**Immunogen:** Recombinant HIF1a (Arg575~Asn826) expressed in *E.coli*

**Accession No.:** RPA798Hu01

### [ **APPLICATIONS** ]

Western blotting: 0.01-2µg/mL;

Immunohistochemistry: 5-20µg/mL;

Immunocytochemistry: 5-20µg/mL;

Optimal working dilutions must be determined by end user.

### [ **FORMULATION** ]

**Form & Buffer:** Supplied as solution form in PBS, pH7.4, containing 0.02% NaN<sub>3</sub>, 50% glycerol.

### [ **STORAGE AND STABILITY** ]

**Storage:** Avoid repeated freeze/thaw cycles.

Store at 4°C for frequent use.

Aliquot and store at -20°C for 24 months.

**Stability Test:** The thermal stability is described by the loss rate. The loss rate was determined by accelerated thermal degradation test, that is, incubate the protein at 37°C for 48h, and no

obvious degradation and precipitation were observed. The loss rate is less than 5% within the expiration date under appropriate storage condition.

**[ IDENTIFICATION ]**

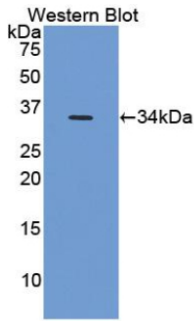
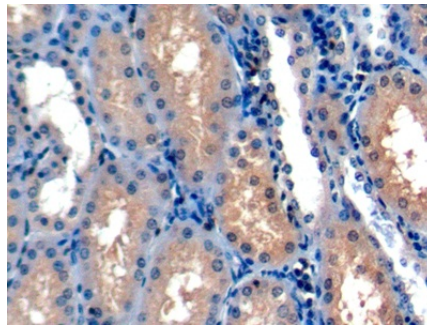
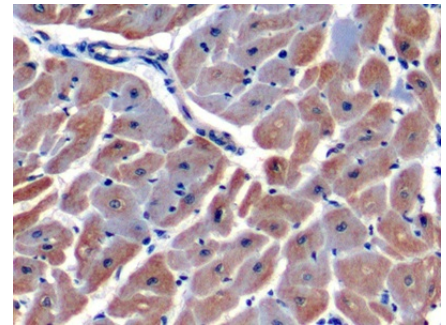


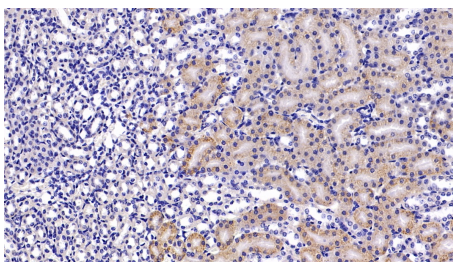
Figure. Western Blot; Sample: Recombinant HIF1a, Human.



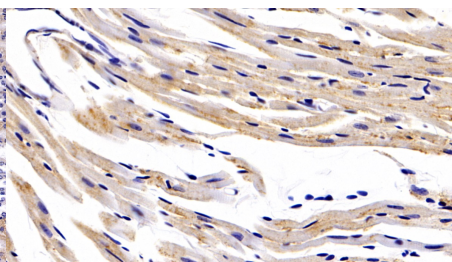
DAB staining on IHC-P; Sample: Mouse Cardiac Muscle Tissue; Primary Ab: 20ug/ml Rabbit Anti-Human HIF1a Antibody Second Ab: 2µg/mL HRP-Linked Caprine Anti-Rabbit IgG Polyclonal Antibody (Catalog: SAA544Rb19)



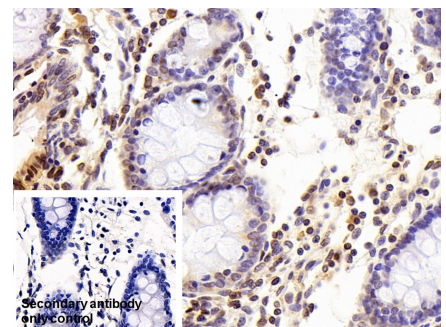
DAB staining on IHC-P; Samples: Human Cardiac Muscle Tissue; Primary Ab: 10µg/ml Rabbit Anti-Human HIF1a Antibody Second Ab: 2µg/mL HRP-Linked Caprine Anti-Rabbit IgG Polyclonal Antibody (Catalog: SAA544Rb19)



DAB staining on IHC-P; Sample: Mouse Kidney Tissue; Primary Ab: 20ug/ml Rabbit Anti-Human HIF1a Antibody Second Ab: 2µg/mL HRP-Linked Caprine Anti-Rabbit IgG Polyclonal Antibody (Catalog: SAA544Rb19)



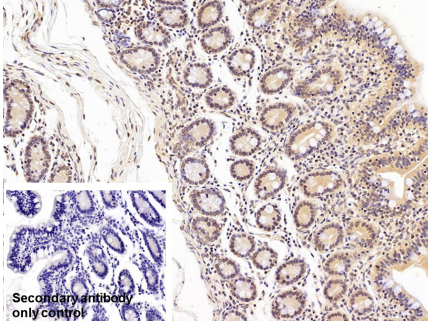
DAB staining on IHC-P; Sample: Mouse Cardiac Muscle Tissue; Primary Ab: 20ug/ml Rabbit Anti-Human HIF1a Antibody Second Ab: 2µg/mL HRP-Linked Caprine Anti-Rabbit IgG Polyclonal Antibody (Catalog: SAA544Rb19)



DAB staining on IHC-P; Sample: Porcine Colon Tissue Primary Ab: 10µg/ml Rabbit Anti-Human HIF1a Antibody Control: Used PBS instead of primary antibody Second Ab: 2µg/ml HRP-Linked Caprine Anti-Rabbit IgG Polyclonal

Antibody

(Catalog: SAA544Rb19)



DAB staining on IHC-P;

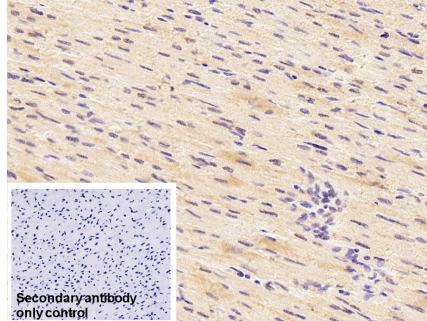
Sample: Porcine Small intestine Tissue

Primary Ab: 10µg/ml Rabbit Anti-Human HIF1a Antibody

Control: Used PBS instead of primary antibody

Second Ab: 2?g/ml HRP-Linked Caprine Anti-Rabbit IgG Polyclonal Antibody

(Catalog: SAA544Rb19)



DAB staining on IHC-P;

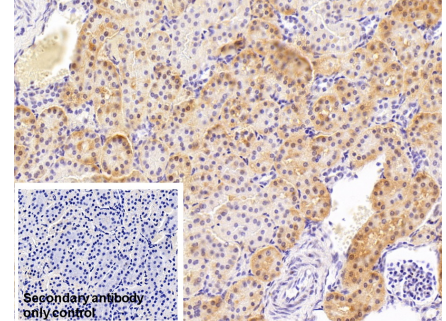
Sample: Porcine Cardiac Muscle Tissue

Primary Ab: 10µg/ml Rabbit Anti-Human HIF1a Antibody

Control: Used PBS instead of primary antibody

Second Ab: 2?g/ml HRP-Linked Caprine Anti-Rabbit IgG Polyclonal Antibody

(Catalog: SAA544Rb19)



DAB staining on IHC-P;

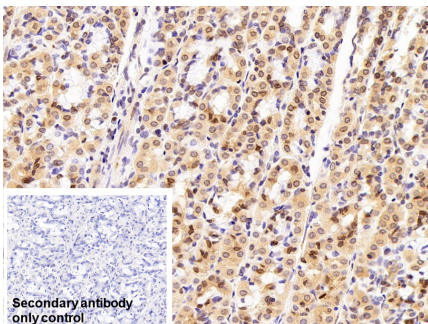
Sample: Porcine Kidney Tissue

Primary Ab: 10µg/ml Rabbit Anti-Human HIF1a Antibody

Control: Used PBS instead of primary antibody

Second Ab: 2?g/ml HRP-Linked Caprine Anti-Rabbit IgG Polyclonal Antibody

(Catalog: SAA544Rb19)



DAB staining on IHC-P;

Sample: Porcine Stomach Tissue

Primary Ab: 10µg/ml Rabbit Anti-Human HIF1a Antibody

Control: Used PBS instead of primary antibody

Second Ab: 2?g/ml HRP-Linked Caprine Anti-Rabbit IgG Polyclonal

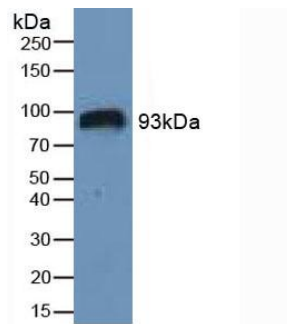
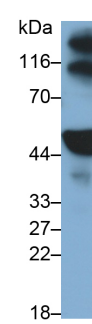


Figure. Western Blot; Sample: Human Serum.



Western Blot; Sample: Rat Serum  
Primary Ab: 2µg/ml Rabbit Anti-Human HIF1a Antibody  
Second Ab: 0.2?g/ml HRP-Linked Caprine Anti-Rabbit IgG Polyclonal Antibody  
(Catalog: SAA544Rb19)

Antibody

(Catalog: SAA544Rb19)

**[ IMPORTANT NOTE ]**

The kit is designed for research use only, we will not be responsible for any issue if the kit was used in clinical diagnostic or any other procedures.