

**PAC615Hu01**

**Polyclonal Antibody to Induced Myeloid Leukemia Cell Differentiation Protein Mcl-1  
(MCL1)**

**Organism Species: *Homo sapiens* (Human)**

***Instruction manual***

FOR RESEARCH USE ONLY

NOT FOR USE IN CLINICAL DIAGNOSTIC PROCEDURES

---

13th Edition (Revised in Aug, 2023)

**[ PROPERTIES ]**

**Source:** Polyclonal antibody preparation

**Host:** Rabbit

**Purification:** Antigen-specific affinity chromatography followed by Protein A affinity chromatography

**Traits:** Liquid

**Concentration:** 0.5mg/mL

**UOM:** 100µL

**Cross Reactivity:** N/A

**Applications:** WB; IHC; ICC; IP.

**[ IMMUNOGEN ]**

**Immunogen:** Recombinant MCL1 (Arg6~Ile328) expressed in *E.coli*

**Accession No.:** RPC615Hu01

**[ APPLICATIONS ]**

Western blotting: 0.01-2µg/mL;

Immunohistochemistry: 5-20µg/mL;

Immunocytochemistry: 5-20µg/mL;

Optimal working dilutions must be determined by end user.

**[ FORMULATION ]**

**Form & Buffer:** Supplied as solution form in PBS, pH7.4, containing 0.02% NaN<sub>3</sub>, 50% glycerol.

**[ STORAGE AND STABILITY ]**

**Storage:** Avoid repeated freeze/thaw cycles.

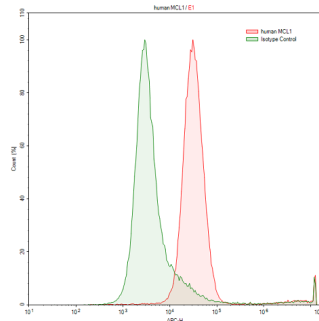
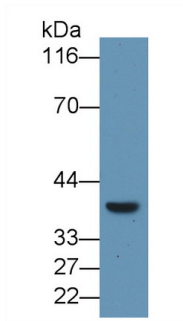
Store at 4°C for frequent use.

Aliquot and store at -20°C for 24 months.

**Stability Test:** The thermal stability is described by the loss rate. The loss rate was determined by accelerated thermal degradation test, that is, incubate the protein at 37°C for 48h, and no

obvious degradation and precipitation were observed. The loss rate is less than 5% within the expiration date under appropriate storage condition.

**[ IDENTIFICATION ]**



Western Blot; Sample: Raji cell lysate      Raji human Burkitt's lymphoma cell line  
 Primary Ab: 1ug/ml Rabbit Anti-Human      was stained with rabbit Anti-human  
 MCL1 Antibody Second Ab: 0.2µg/mL      MCL1 Polyclonal Antibody (Catalog #  
 HRP-Linked Caprine Anti-Rabbit IgG      PAC615Hu01), filled red histogram) or  
 Polyclonal Antibody (Catalog:      Isotype control antibody (Catalog #  
 SAA544Rb19)      IS067-Rb01, filled green histogram),  
 followed by APC-conjugated Anti-rabbit  
 IgG Secondary Antibody (Catalog #  
 SAA544Rb15). Cells were fixed with  
 4% paraformaldehyde and  
 permeabilized with 0.1% Triton X-100.

**[ IMPORTANT NOTE ]**

The kit is designed for research use only, we will not be responsible for any issue if the kit was used in clinical diagnostic or any other procedures.