

**PAC615Mu01**

**Polyclonal Antibody to Induced Myeloid Leukemia Cell Differentiation Protein Mcl-1  
(MCL1)**

**Organism Species: *Mus musculus* (Mouse)**

***Instruction manual***

FOR RESEARCH USE ONLY

NOT FOR USE IN CLINICAL DIAGNOSTIC PROCEDURES

---

13th Edition (Revised in Aug, 2023)

**[ PROPERTIES ]**

**Source:** Polyclonal antibody preparation

**Host:** Rabbit

**Purification:** Antigen-specific affinity chromatography followed by Protein A affinity chromatography

**Traits:** Liquid

**Concentration:** 0.5mg/mL

**UOM:** 200µL

**Cross Reactivity:** Human

**Applications:** WB; IHC; ICC/IF;FCM

**[ IMMUNOGEN ]**

**Immunogen:** Recombinant MCL1 (Glu66~Gly307) expressed in *E.coli*

**Accession No.:** RPC615Mu01

**[ APPLICATIONS ]**

Western blotting: 0.01-2?g/mL;

Immunohistochemistry: 5-20?g/mL;

Immunocytochemistry: 5-40?g/mL;

Flow cytometry:20?g/ml;

Optimal working dilutions must be determined by end user.

**[ FORMULATION ]**

**Form & Buffer:** Supplied as solution form in PBS, pH7.4, containing 0.02% NaN<sub>3</sub>, 50% glycerol.

**[ STORAGE AND STABILITY ]**

**Storage:** Avoid repeated freeze/thaw cycles.

Store at 4°C for frequent use.

Aliquot and store at -20°C for 24 months.

**Stability Test:** The thermal stability is described by the loss rate. The loss rate was determined by accelerated thermal degradation test, that is, incubate the protein at 37°C for 48h, and no obvious degradation and precipitation were observed. The loss rate is less than 5% within the expiration date under appropriate storage condition.

**[ IDENTIFICATION ]**

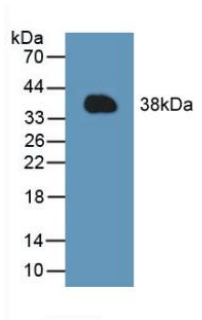
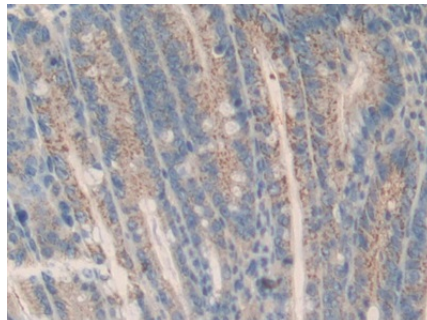
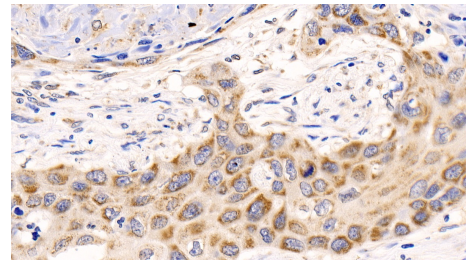


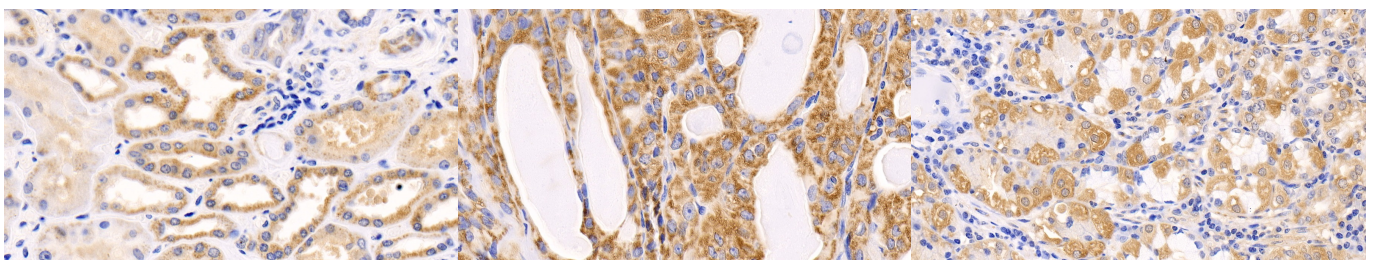
Figure. Western Blot; Sample: Recombinant MCL1, Mouse.



DAB staining on IHC-P; Samples: Mouse Intestine Tissue; Primary Ab: 10µg/ml Rabbit Anti-Mouse MCL1 Antibody Second Ab: 2µg/mL HRP-Linked Caprine Anti-Rabbit IgG Polyclonal Antibody (Catalog: SAA544Rb19)



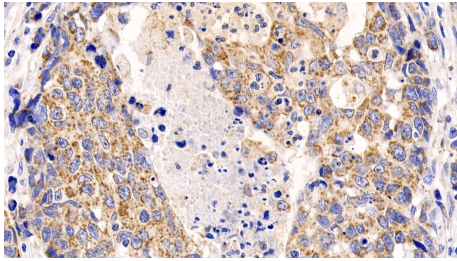
DAB staining on IHC-P; Samples: Human Lung cancer Tissue; Primary Ab: 20ug/ml Rabbit Anti-Mouse MCL1 Antibody Second Ab: 2µg/mL HRP-Linked Caprine Anti-Rabbit IgG Polyclonal Antibody (Catalog: SAA544Rb19)



DAB staining on IHC-P; Samples: Human Kidney Tissue; Primary Ab: 20ug/ml Rabbit Anti-Mouse MCL1 Antibody Second Ab: 2µg/mL HRP-Linked Caprine Anti-Rabbit IgG Polyclonal Antibody (Catalog: SAA544Rb19)

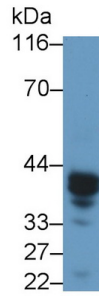
DAB staining on IHC-P; Samples: Human Thyroid Tissue; Primary Ab: 20ug/ml Rabbit Anti-Mouse MCL1 Antibody Second Ab: 2µg/mL HRP-Linked Caprine Anti-Rabbit IgG Polyclonal Antibody (Catalog: SAA544Rb19)

DAB staining on IHC-P; Samples: Human Stomach Tissue; Primary Ab: 20ug/ml Rabbit Anti-Mouse MCL1 Antibody Second Ab: 2µg/mL HRP-Linked Caprine Anti-Rabbit IgG Polyclonal Antibody (Catalog: SAA544Rb19)

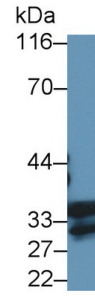


DAB staining on IHC-P;

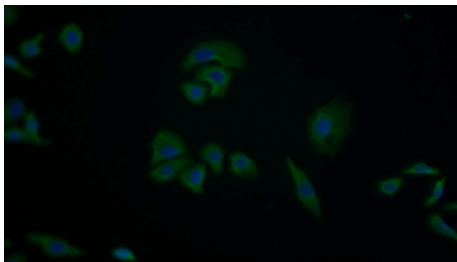
Samples: Human Lymphoma Tissue;  
 Primary Ab: 20ug/ml Rabbit Anti-Mouse  
 MCL1 Antibody  
 Second Ab: 2µg/mL HRP-Linked  
 Caprine Anti-Rabbit IgG Polyclonal  
 Antibody  
 (Catalog: SAA544Rb19)



Western Blot; Sample: Mouse Spleen  
 lysate  
 Primary Ab: 0.3µg/ml Rabbit Anti-  
 Mouse MCL1 Antibody  
 Second Ab: 0.2µg/mL HRP-Linked  
 Caprine Anti-Rabbit IgG Polyclonal  
 Antibody  
 (Catalog: SAA544Rb19)

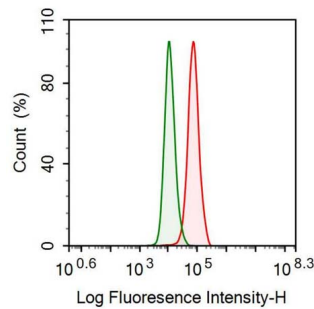


Western Blot; Sample: Mouse Small  
 intestine lysate  
 Primary Ab: 0.3µg/ml Rabbit Anti-  
 Mouse MCL1 Antibody  
 Second Ab: 0.2µg/mL HRP-Linked  
 Caprine Anti-Rabbit IgG Polyclonal  
 Antibody  
 (Catalog: SAA544Rb19)



FITC staining on IF;

Samples: Human HeLa cell;  
 Primary Ab: 40µg/ml Rabbit Anti-Mouse  
 MCL1 Antibody  
 Second Ab: 1.5µg/ml FITC-Linked  
 Caprine Anti-Rabbit IgG Polyclonal  
 Antibody  
 (Catalog: SAA544Rb18)



Mouse Hepa1-6 cell was fixed with 2%  
 paraformaldehyde (10 min) ,  
 permeabilised with 0.1% BSA-Triton  
 X-100, then stained with 20µg/ml rabbit  
 Anti-Mouse MCL1 Polyclonal Antibody  
 (Catalog PAC615Mu01, red histogram)  
 or Isotype control antibody (Catalog  
 IS067-Rb01, green histogram), followed  
 by 1µg/ml FITC-conjugated Anti-rabbit  
 IgG Secondary Antibody (Catalog  
 SAA544Rb18).

**[ IMPORTANT NOTE ]**

The kit is designed for research use only, we will not be responsible for any issue if the kit was used in clinical diagnostic or any other procedures.