

PAH820Hu01

Polyclonal Antibody to Interleukin 1 Receptor Like Protein 1 (IL1RL1)

Organism Species: *Homo sapiens (Human)*

Instruction manual

FOR RESEARCH USE ONLY

NOT FOR USE IN CLINICAL DIAGNOSTIC PROCEDURES

13th Edition (Revised in Aug, 2023)

[PROPERTIES]

Source: Polyclonal antibody preparation

Host: Rabbit

Purification: Antigen-specific affinity chromatography followed by Protein A affinity chromatography

Traits: Liquid

Concentration: 0.5mg/ml

UOM: 100µl

Cross Reactivity: Porcine.

Applications: WB; IHC

[IMMUNOGEN]

Immunogen: Recombinant IL1RL1 (His162~Ile349 (Accession # Q01638)) expressed in *E.coli*

Accession No.: RPH820Hu01

[APPLICATIONS]

Western blotting: 0.01-3µg/mL;

Immunohistochemistry: 5-20µg/mL;

Optimal working dilutions must be determined by end user.

[FORMULATION]

Form & Buffer: Supplied as solution form in PBS, pH7.4, containing 0.02% NaN₃, 50% glycerol.

[STORAGE AND STABILITY]

Storage: Avoid repeated freeze/thaw cycles.

Store at 4°C for frequent use.

Aliquot and store at -20°C for 24 months.

Stability Test: The thermal stability is described by the loss rate. The loss rate was determined by accelerated thermal degradation test, that is, incubate the protein at 37°C for 48h, and no obvious degradation and precipitation were observed. The loss rate is less than 5% within the

expiration date under appropriate storage condition.

[IDENTIFICATION]

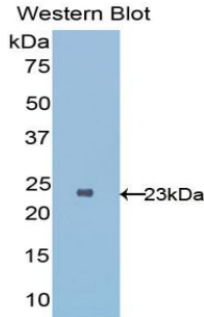
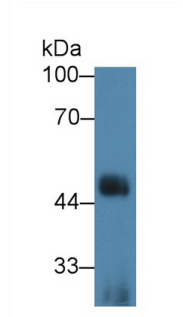
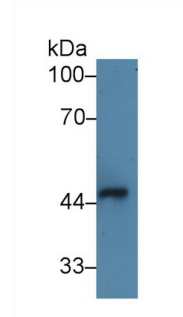


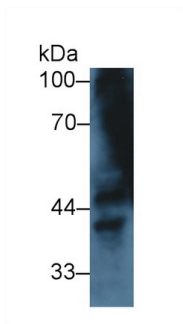
Figure. Western Blot; Sample: Recombinant IL1RL1, Human.



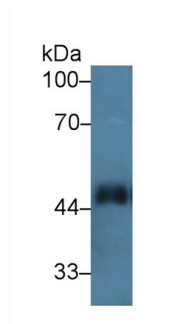
Western Blot; Sample: K562 cell lysate; Primary Ab: 3µg/ml Rabbit Anti-Human IL1RL1 Antibody
Second Ab: 0.2µg/mL HRP-Linked Caprine Anti-Rabbit IgG Polyclonal Antibody
(Catalog: SAA544Rb19) Selected



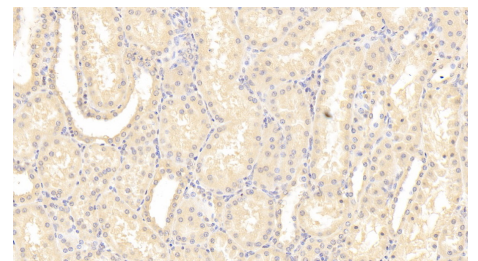
Western Blot; Sample: 293T cell lysate; Primary Ab: 3µg/ml Rabbit Anti-Human IL1RL1 Antibody
Second Ab: 0.2µg/mL HRP-Linked Caprine Anti-Rabbit IgG Polyclonal Antibody
(Catalog: SAA544Rb19) Selected



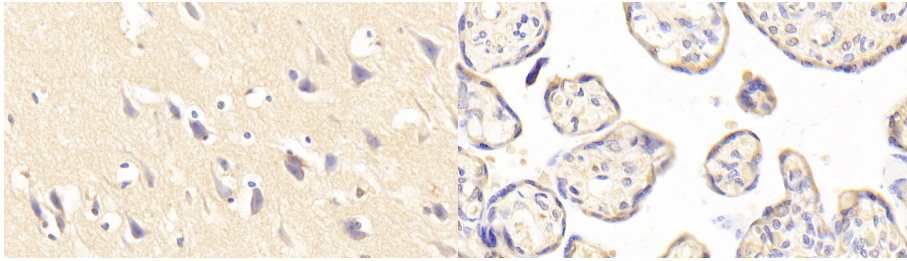
Western Blot; Sample: Porcine Cerebrum lysate; Primary Ab: 3µg/ml Rabbit Anti-Human IL1RL1 Antibody
Second Ab: 0.2µg/mL HRP-Linked Caprine Anti-Rabbit IgG Polyclonal Antibody
(Catalog: SAA544Rb19) Selected



Western Blot; Sample: Human Lung lysate; Primary Ab: 3µg/ml Rabbit Anti-Human IL1RL1 Antibody
Second Ab: 0.2µg/mL HRP-Linked Caprine Anti-Rabbit IgG Polyclonal Antibody
(Catalog: SAA544Rb19) Selected



DAB staining on IHC-P; Samples: Human Kidney Tissue; Primary Ab: 20µg/ml Rabbit Anti-Human IL1RL1 Antibody
Second Ab: 2µg/mL HRP-Linked Caprine Anti-Rabbit IgG Polyclonal Antibody
(Catalog: SAA544Rb19)



DAB staining on IHC-P;

Samples: Human Cerebrum Tissue;

Primary Ab: 20?g/ml Rabbit Anti-
Human IL1RL1 Antibody

Second Ab: 2µg/mL HRP-Linked
Caprine Anti-Rabbit IgG Polyclonal
Antibody

(Catalog: SAA544Rb19)

DAB staining on IHC-P;

Samples: Human Placenta Tissue;

Primary Ab: 20?g/ml Rabbit Anti-
Human IL1RL1 Antibody

Second Ab: 2µg/mL HRP-Linked
Caprine Anti-Rabbit IgG Polyclonal
Antibody

(Catalog: SAA544Rb19)

[IMPORTANT NOTE]

The kit is designed for research use only, we will not be responsible for any issue if the kit was used in clinical diagnostic or any other procedures.