

PAE771Mu01

Polyclonal Antibody to Interleukin 11 Receptor Alpha (IL11Ra)

Organism Species: *Mus musculus* (Mouse)

Instruction manual

FOR RESEARCH USE ONLY

NOT FOR USE IN CLINICAL DIAGNOSTIC PROCEDURES

13th Edition (Revised in Aug, 2023)

[PROPERTIES]

Source: Polyclonal antibody preparation

Host: Rabbit

Purification: Antigen-specific affinity chromatography followed by Protein A affinity chromatography

Traits: Liquid

Concentration: 500µg/mL

UOM: 100µl

Cross Reactivity: Mouse; Rat; Porcine.

Applications: WB,IHC,ICC/IF

[IMMUNOGEN]

Immunogen: Recombinant IL11Ra (Trp59~Arg217 (Accession # Q64385)) expressed in *E.coli*

Accession No.: RPE771Mu01

[APPLICATIONS]

Western blotting: 0.01-2µg/mL;

Immunohistochemistry: 5-30µg/mL;

Immunofluorescence:5-20µg/mL;

Optimal working dilutions must be determined by end user.

[FORMULATION]

Form & Buffer: Supplied as solution form in 0.01M PBS, pH7.4, containing 0.05% Proclin-300, 50% glycerol.

[STORAGE AND STABILITY]

Storage: Avoid repeated freeze/thaw cycles.

Store at 4°C for frequent use.

Aliquot and store at -20°C for 24 months.

Stability Test: The thermal stability is described by the loss rate. The loss rate was determined by accelerated thermal degradation test, that is, incubate the protein at 37°C for 48h, and no

obvious degradation and precipitation were observed. The loss rate is less than 5% within the expiration date under appropriate storage condition.

[IDENTIFICATION]

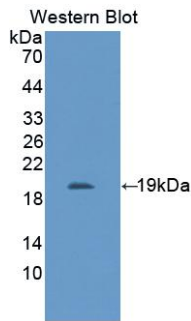
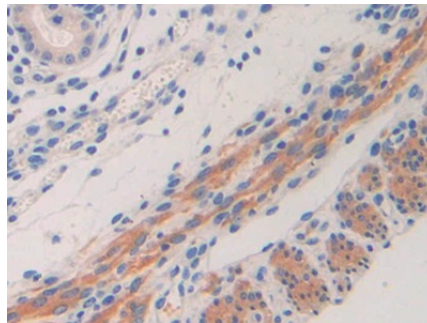
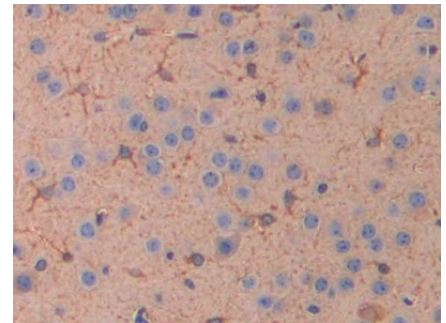


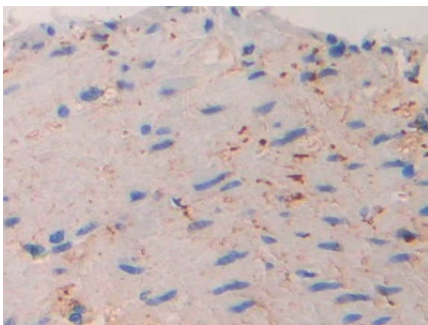
Figure. Western Blot; Sample: Recombinant IL11Ra, Mouse.



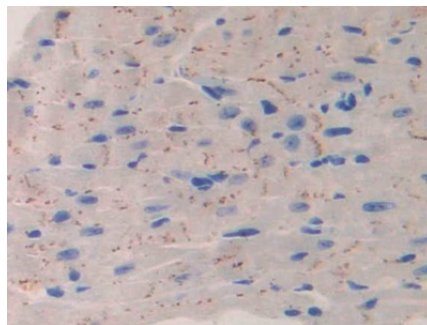
DAB staining on IHC-P; Samples: Mouse Uterus Tissue; Primary Ab: 30µg/ml Rabbit Anti-Mouse IL11Ra Antibody Second Ab: 2µg/mL HRP-Linked Caprine Anti-Rabbit IgG Polyclonal Antibody (Catalog: SAA544Rb19)



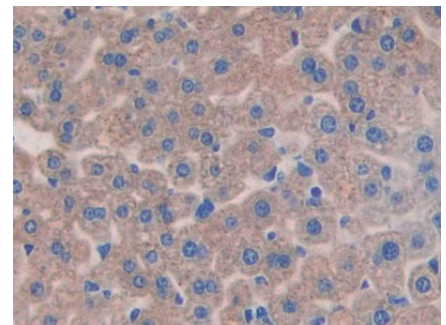
DAB staining on IHC-P; Samples: Mouse Cerebrum Tissue; Primary Ab: 30µg/ml Rabbit Anti-Mouse IL11Ra Antibody Second Ab: 2µg/mL HRP-Linked Caprine Anti-Rabbit IgG Polyclonal Antibody (Catalog: SAA544Rb19)



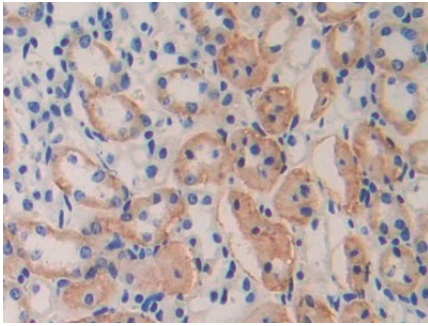
DAB staining on IHC-P; Samples: Mouse Small intestine Tissue; Primary Ab: 30µg/ml Rabbit Anti-Mouse IL11Ra Antibody Second Ab: 2µg/mL HRP-Linked Caprine Anti-Rabbit IgG Polyclonal Antibody (Catalog: SAA544Rb19)



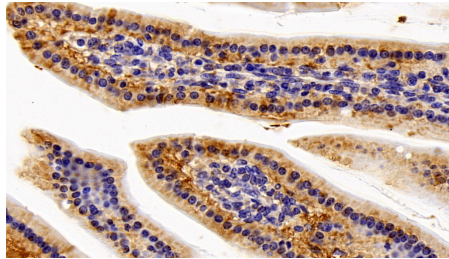
DAB staining on IHC-P; Samples: Mouse Heart Tissue; Primary Ab: 30µg/ml Rabbit Anti-Mouse IL11Ra Antibody Second Ab: 2µg/mL HRP-Linked Caprine Anti-Rabbit IgG Polyclonal Antibody (Catalog: SAA544Rb19)



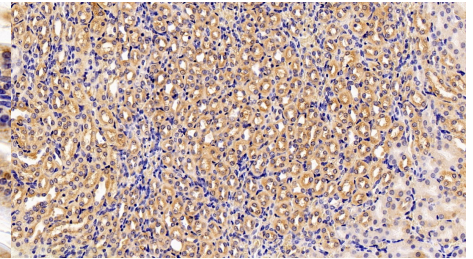
DAB staining on IHC-P; Samples: Mouse Liver Tissue; Primary Ab: 30µg/ml Rabbit Anti-Mouse IL11Ra Antibody Second Ab: 2µg/mL HRP-Linked Caprine Anti-Rabbit IgG Polyclonal Antibody (Catalog: SAA544Rb19)



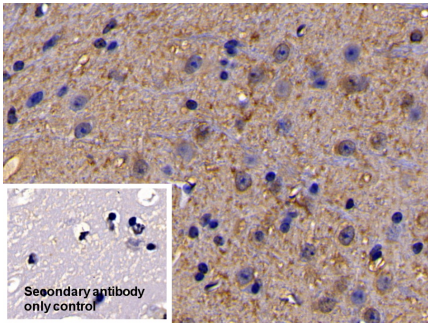
DAB staining on IHC-P;
 Samples: Mouse Kidney Tissue;
 Primary Ab: 30µg/ml Rabbit Anti-Mouse
 IL11Ra Antibody
 Second Ab: 2µg/ml HRP-Linked
 Caprine Anti-Rabbit IgG Polyclonal
 Antibody
 (Catalog: SAA544Rb19)



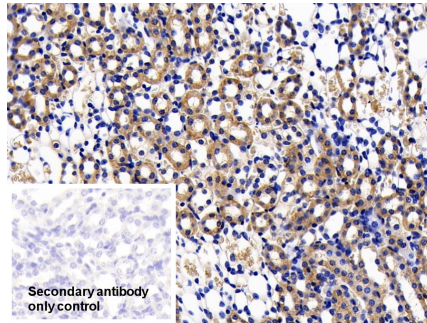
DAB staining on IHC-P;
 Sample: Mouse Small intestine Tissue;
 Primary Ab: 10ug/ml Rabbit Anti-Mouse
 IL11Ra Antibody
 Second Ab: 2µg/mL HRP-Linked
 Caprine Anti-Rabbit IgG Polyclonal
 Antibody
 (Catalog: SAA544Rb19)



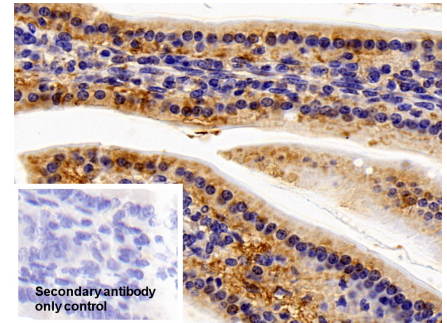
DAB staining on IHC-P;
 Sample: Mouse Kidney Tissue;
 Primary Ab: 10ug/ml Rabbit Anti-Mouse
 IL11Ra Antibody
 Second Ab: 2µg/mL HRP-Linked
 Caprine Anti-Rabbit IgG Polyclonal
 Antibody
 (Catalog: SAA544Rb19)



DAB staining on IHC-P;
 Sample: Mouse Cerebrum Tissue
 Primary Ab: 20µg/ml Rabbit Anti-Mouse
 IL11Ra Antibody
 Control: Used PBS instead of primary
 antibody
 Second Ab: 2µg/ml HRP-Linked
 Caprine Anti-Rabbit IgG Polyclonal
 Antibody
 (Catalog: SAA544Rb19)



DAB staining on IHC-P;
 Sample: Mouse Kidney Tissue
 Primary Ab: 20µg/ml Rabbit Anti-Mouse
 IL11Ra Antibody
 Control: Used PBS instead of primary
 antibody
 Second Ab: 2µg/ml HRP-Linked
 Caprine Anti-Rabbit IgG Polyclonal
 Antibody
 (Catalog: SAA544Rb19)

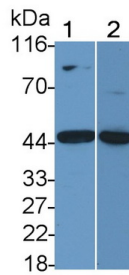


DAB staining on IHC-P;
 Sample: Mouse Small intestine Tissue
 Primary Ab: 10µg/ml Rabbit Anti-Mouse
 IL11Ra Antibody
 Control: Used PBS instead of primary
 antibody
 Second Ab: 2µg/ml HRP-Linked
 Caprine Anti-Rabbit IgG Polyclonal
 Antibody
 (Catalog: SAA544Rb19)



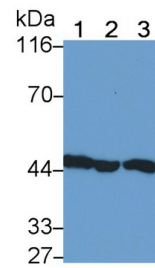
Western Blot; Sample: Rat Kidney lysate;

Primary Ab: 1µg/ml Rabbit Anti-Mouse IL11Ra Antibody
 Second Ab: 0.2µg/mL HRP-Linked Caprine Anti-Rabbit IgG Polyclonal Antibody
 (Catalog: SAA544Rb19)



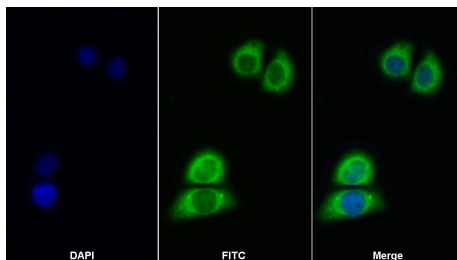
Western Blot; Sample: Lane1: Mouse Skeletal muscle lysate; Lane2: 293T cell lysate

Primary Ab: 0.1µg/ml Rabbit Anti-Mouse IL11Ra Antibody
 Second Ab: 0.2µg/mL HRP-Linked Caprine Anti-Rabbit IgG Polyclonal Antibody
 (Catalog: SAA544Rb19)



Western Blot; Sample: Lane1: Mouse Skeletal muscle lysate; Lane2: Porcine Skeletal muscle lysate; Lane3: Rat

Skeletal muscle lysate
 Primary Ab: 0.3µg/ml Rabbit Anti-Mouse IL11Ra Antibody
 Second Ab: 0.2µg/mL HRP-Linked Caprine Anti-Rabbit IgG Polyclonal Antibody
 (Catalog: SAA544Rb19)



FITC staining on IF;
 Sample: HeLa cell

Primary Ab: 20µg/ml Rabbit Anti-Mouse IL11Ra Antibody
 Second Ab: 2µg/ml FITC-Linked Caprine Anti-Rabbit IgG Polyclonal Antibody
 (Catalog: SAA544Rb11)

[IMPORTANT NOTE]

The kit is designed for research use only, we will not be responsible for any issue if the kit was

used in clinical diagnostic or any other procedures.