

**PAE765Ra01**

**Polyclonal Antibody to Interleukin 23 Receptor (IL23R)**

**Organism Species: *Rattus norvegicus* (Rat)**

***Instruction manual***

FOR RESEARCH USE ONLY

NOT FOR USE IN CLINICAL DIAGNOSTIC PROCEDURES

---

13th Edition (Revised in Aug, 2023)

### [ **PROPERTIES** ]

**Source:** Polyclonal antibody preparation

**Host:** Rabbit

**Purification:** Antigen-specific affinity chromatography followed by Protein A affinity chromatography

**Traits:** Liquid

**Concentration:** 0.5mg/mL

**UOM:** 100µL

**Cross Reactivity:** Mouse

**Applications:** WB; IHC; ICC; IP.

### [ **IMMUNOGEN** ]

**Immunogen:** Recombinant IL23R (Ile25~Leu356) expressed in *E.coli*

**Accession No.:** RPE765Ra01

### [ **APPLICATIONS** ]

Western blotting: 0.01-2µg/mL;

Immunohistochemistry: 5-20µg/mL;

Immunocytochemistry: 5-20µg/mL;

Optimal working dilutions must be determined by end user.

### [ **FORMULATION** ]

**Form & Buffer:** Supplied as solution form in PBS, pH7.4, containing 0.02% NaN<sub>3</sub>, 50% glycerol.

### [ **STORAGE AND STABILITY** ]

**Storage:** Avoid repeated freeze/thaw cycles.

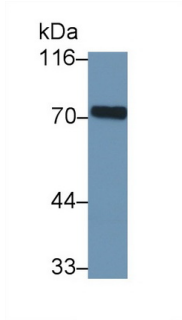
Store at 4°C for frequent use.

Aliquot and store at -20°C for 24 months.

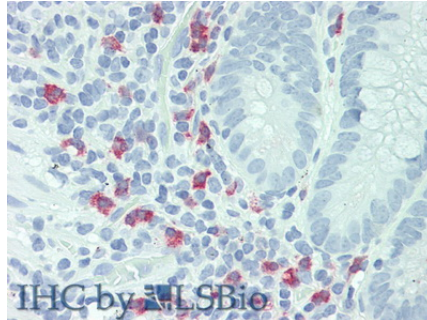
**Stability Test:** The thermal stability is described by the loss rate. The loss rate was determined by accelerated thermal degradation test, that is, incubate the protein at 37°C for 48h, and no

obvious degradation and precipitation were observed. The loss rate is less than 5% within the expiration date under appropriate storage condition.

**[ IDENTIFICATION ]**



Western Blot; Sample: Mouse Serum  
 Primary Ab: 1?g/ml Rabbit Anti-Rat  
 IL23R Antibody Second Ab: 0.2µg/mL  
 HRP-Linked Caprine Anti-Rabbit IgG  
 Polyclonal Antibody (Catalog:  
 SAA544Rb19)



Vector Red staining on IHC-P;  
 Samples: Human Small Intestine  
 Tissue; Primary Ab: 10µg/ml Rabbit  
 Anti-Human IL23R Antibody Second  
 Ab: 2µg/mL HRP-Linked Caprine Anti-  
 Rabbit IgG Polyclonal Antibody

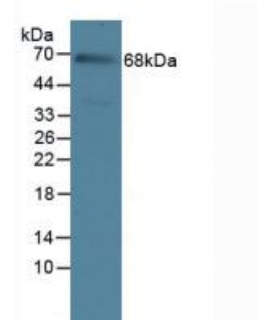
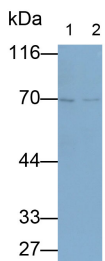
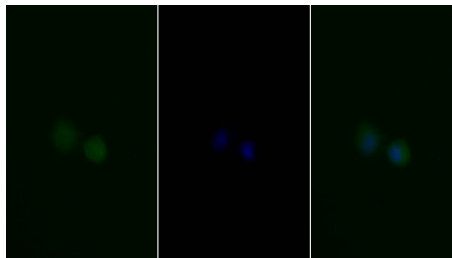


Figure. Western Blot; Sample: Rat  
 Serum Tissue.



Western Blot; Samples: Lane1: K562  
 cell lysate; Lane2: THP1 cell lysate;  
 Primary Ab: 0.5µg/ml Rabbit Anti-Rat  
 IL23R Antibody  
 Second Ab: 0.2?g/ml HRP-Linked  
 Caprine Anti-Rabbit IgG Polyclonal  
 Antibody  
 (Catalog: SAA544Rb19)



FITC staining on IF;  
 Sample: Human MCF7 cell;  
 Primary Ab: 20?g/ml Rabbit Anti-Rat  
 IL23R Antibody  
 Second Ab: 1.5?g/ml FITC-Linked  
 Caprine Anti-Rabbit IgG Polyclonal  
 Antibody  
 (Catalog: SAA544Rb18)

**[ IMPORTANT NOTE ]**

The kit is designed for research use only, we will not be responsible for any issue if the kit was used in clinical diagnostic or any other procedures.