

PAE763Hu01

Polyclonal Antibody to Interleukin 31 Receptor A (IL31RA)

Organism Species: *Homo sapiens (Human)*

Instruction manual

FOR RESEARCH USE ONLY

NOT FOR USE IN CLINICAL DIAGNOSTIC PROCEDURES

13th Edition (Revised in Aug, 2023)

[PROPERTIES]

Source: Polyclonal antibody preparation

Host: Rabbit

Purification: Antigen-specific affinity chromatography followed by Protein A affinity chromatography

Traits: Liquid

Concentration: 0.5mg/mL

UOM: 100µl

Cross Reactivity: Porcine

Applications: WB, ICC/IF

[IMMUNOGEN]

Immunogen: Recombinant IL31RA (Val205~Gly456) expressed in *E.coli*

Accession No.: RPE763Hu01

[APPLICATIONS]

Western blotting: 0.01-5µg/mL;

Immunofluorescence: 5-20µg/mL;

Optimal working dilutions must be determined by end user.

[FORMULATION]

Form & Buffer: Supplied as solution form in 0.01M PBS, pH7.4, containing 0.05% Proclin-300, 50% glycerol.

[STORAGE AND STABILITY]

Storage: Avoid repeated freeze/thaw cycles.

Store at 4°C for frequent use.

Aliquot and store at -20°C for 24 months.

Stability Test: The thermal stability is described by the loss rate. The loss rate was determined by accelerated thermal degradation test, that is, incubate the protein at 37°C for 48h, and no obvious degradation and precipitation were observed. The loss rate is less than 5% within the

expiration date under appropriate storage condition.

[IDENTIFICATION]

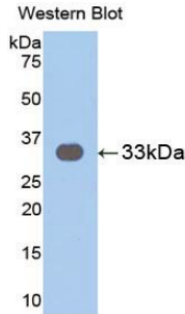
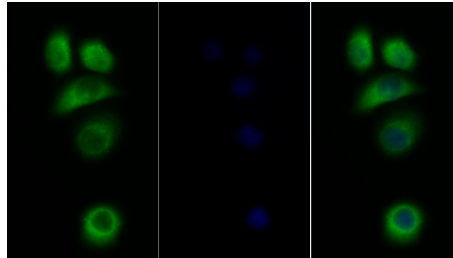
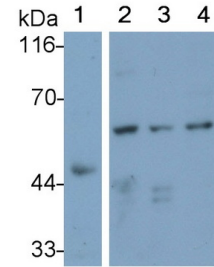


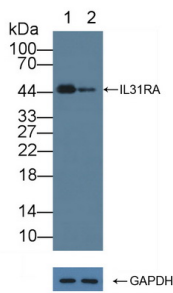
Figure. Western Blot; Sample: Recombinant IL31RA, Human.



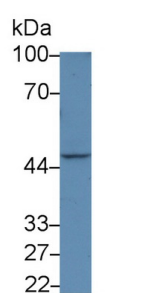
FITC staining on IF; Sample: Human MCF7 cell; Primary Ab: 20µg/ml Rabbit Anti-Human IL31RA Antibody Second Ab: 1.5µg/ml FITC-Linked Caprine Anti-Rabbit IgG Polyclonal Antibody (Catalog: SAA544Rb18)



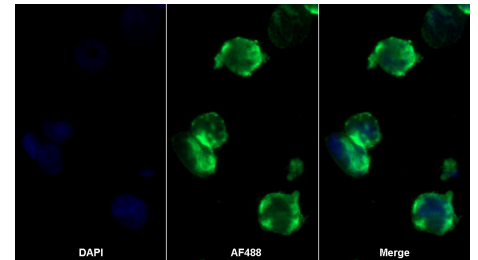
Western Blot; Sample: Lane1: Porcine Liver lysate; Lane2: 293T cell lysate; Lane3: 293F cell lysate; Lane4: Jurkat cell lysate
Primary Ab: 0.5µg/ml Rabbit Anti-Human IL31RA Antibody
Second Ab: 0.2µg/mL HRP-Linked Caprine Anti-Rabbit IgG Polyclonal Antibody (Catalog: SAA544Rb19)



Knockout Verification:
Lane 1: Wild-type 293T cell lysate;
Lane 2: IL31RA knockout 293T cell lysate;
Predicted MW: 41~80kd
Observed MW: 45kd
Primary Ab: 5µg/ml Rabbit Anti-Human IL31RA Antibody
Second Ab: 0.2µg/mL HRP-Linked



Western Blot; Sample: Human Liver lysate;
Primary Ab: 5µg/ml Rabbit Anti-Human IL31RA Antibody
Second Ab: 0.2µg/mL HRP-Linked Caprine Anti-Rabbit IgG Polyclonal Antibody (Catalog: SAA544Rb19)



AF488 staining on IF;
Sample: K562 cell
Primary Ab: 20µg/ml Rabbit Anti-Human IL31RA Antibody
Second Ab: 2µg/ml AF488-Linked Caprine Anti-Rabbit IgG Polyclonal Antibody (Catalog: SAA544Rb11)

Caprine Anti-Rabbit IgG Polyclonal

Antibody

(Catalog: SAA544Rb19)

[IMPORTANT NOTE]

The kit is designed for research use only, we will not be responsible for any issue if the kit was used in clinical diagnostic or any other procedures.