

PAC288Hu01

Polyclonal Antibody to Ionized Calcium-binding Adapter Molecule 1 (IBA1)

Organism Species: *Homo sapiens (Human)*

Instruction manual

FOR RESEARCH USE ONLY

NOT FOR USE IN CLINICAL DIAGNOSTIC PROCEDURES

13th Edition (Revised in Aug, 2023)

[PROPERTIES]

Source: Polyclonal antibody preparation

Host: Rabbit

Purification: Antigen-specific affinity chromatography followed by Protein A affinity chromatography

Traits: Liquid

Concentration: 0.5mg/ml

UOM: 100µl

Cross Reactivity: Mouse; Rat; Porcine.

Applications: WB,IHC

[IMMUNOGEN]

Immunogen: Recombinant IBA1 (Met1~Pro147) expressed in *E.coli*

Accession No.: RPC288Hu01

[APPLICATIONS]

Western blotting: 0.01-2µg/mL;

Immunohistochemistry: 5-20µg/mL;

Optimal working dilutions must be determined by end user.

[FORMULATION]

Form & Buffer: Supplied as solution form in 0.01M PBS, pH7.4, containing 0.05% Proclin-300, 50% glycerol.

[STORAGE AND STABILITY]

Storage: Avoid repeated freeze/thaw cycles.

Store at 4°C for frequent use.

Aliquot and store at -20°C for 24 months.

Stability Test: The thermal stability is described by the loss rate. The loss rate was determined by accelerated thermal degradation test, that is, incubate the protein at 37°C for 48h, and no obvious degradation and precipitation were observed. The loss rate is less than 5% within the

expiration date under appropriate storage condition.

[IDENTIFICATION]

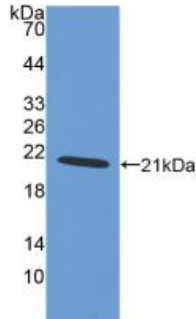
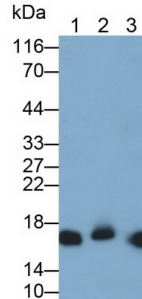
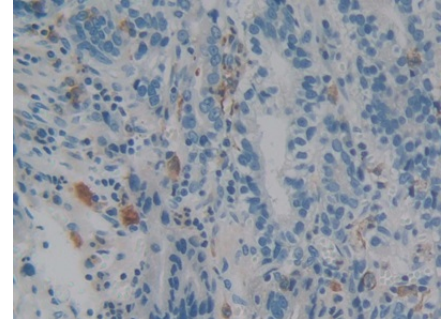


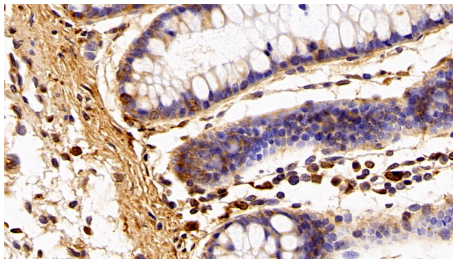
Figure. Western Blot; Sample: Recombinant AIF1, Human.



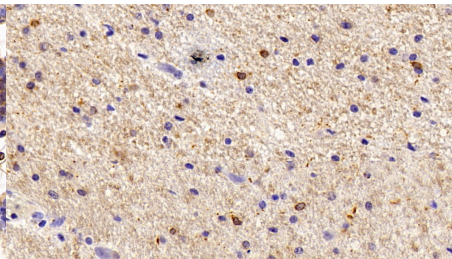
Western Blot; Sample: Lane1: Porcine Spleen lysate; Lane2: Mouse Spleen lysate; Lane3: Rat Spleen lysate
 Primary Ab: 0.2µg/ml Rabbit Anti-Human IBA1 Antibody
 Second Ab: 0.2µg/mL HRP-Linked Caprine Anti-Rabbit IgG Polyclonal Antibody
 (Catalog: SAA544Rb19)



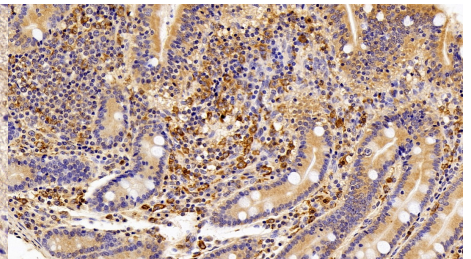
DAB staining on IHC-P;
 Samples: Human Stomach cancer Tissue;
 Primary Ab: 10µg/ml Rabbit Anti-Human AIF1 Antibody
 Second Ab: 2µg/mL HRP-Linked Caprine Anti-Rabbit IgG Polyclonal Antibody
 (Catalog: SAA544Rb19)



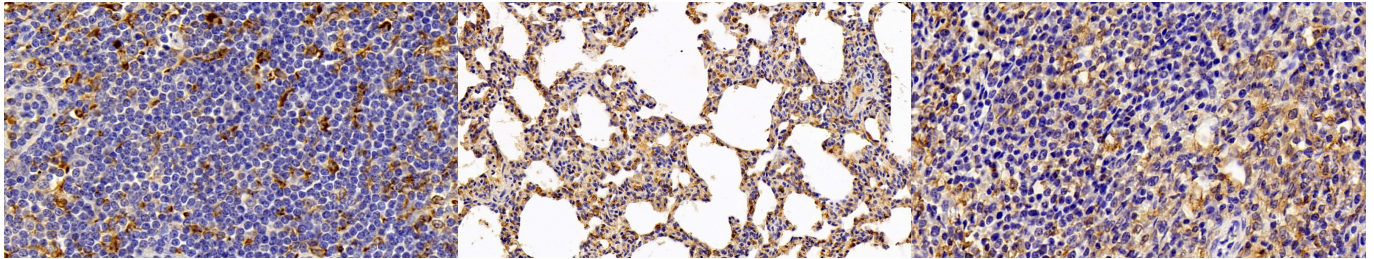
DAB staining on IHC-P;
 Sample: Porcine Colon Tissue;
 Primary Ab: 20µg/ml Rabbit Anti-Human IBA1 Antibody
 Second Ab: 2µg/mL HRP-Linked Caprine Anti-Rabbit IgG Polyclonal Antibody
 (Catalog: SAA544Rb19)



DAB staining on IHC-P;
 Sample: Porcine Cerebrum Tissue;
 Primary Ab: 20µg/ml Rabbit Anti-Human IBA1 Antibody
 Second Ab: 2µg/mL HRP-Linked Caprine Anti-Rabbit IgG Polyclonal Antibody
 (Catalog: SAA544Rb19)



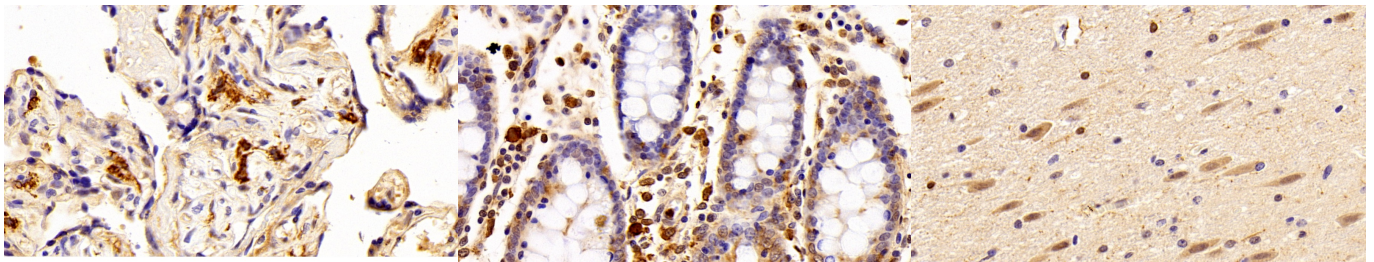
DAB staining on IHC-P;
 Sample: Porcine Small intestine Tissue;
 Primary Ab: 20µg/ml Rabbit Anti-Human IBA1 Antibody
 Second Ab: 2µg/mL HRP-Linked Caprine Anti-Rabbit IgG Polyclonal Antibody
 (Catalog: SAA544Rb19)



DAB staining on IHC-P;
 Sample: Porcine Lymph node Tissue;
 Primary Ab: 20µg/ml Rabbit Anti-Human IBA1 Antibody
 Second Ab: 2µg/mL HRP-Linked Caprine Anti-Rabbit IgG Polyclonal Antibody
 (Catalog: SAA544Rb19)

DAB staining on IHC-P;
 Sample: Porcine Lung Tissue;
 Primary Ab: 20µg/ml Rabbit Anti-Human IBA1 Antibody
 Second Ab: 2µg/mL HRP-Linked Caprine Anti-Rabbit IgG Polyclonal Antibody
 (Catalog: SAA544Rb19)

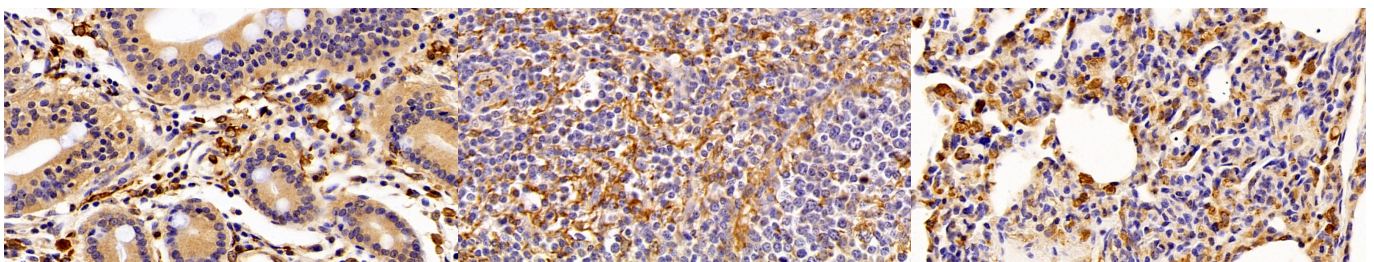
DAB staining on IHC-P;
 Sample: Porcine Spleen Tissue;
 Primary Ab: 20µg/ml Rabbit Anti-Human IBA1 Antibody
 Second Ab: 2µg/mL HRP-Linked Caprine Anti-Rabbit IgG Polyclonal Antibody
 (Catalog: SAA544Rb19)



DAB staining on IHC-P;
 Sample: Human Placenta Tissue;
 Primary Ab: 20ug/ml Rabbit Anti-Human IBA1 Antibody
 Second Ab: 2µg/mL HRP-Linked Caprine Anti-Rabbit IgG Polyclonal Antibody
 (Catalog: SAA544Rb19)

DAB staining on IHC-P;
 Sample: Porcine Colon Tissue;
 Primary Ab: 20ug/ml Rabbit Anti-Human IBA1 Antibody
 Second Ab: 2µg/mL HRP-Linked Caprine Anti-Rabbit IgG Polyclonal Antibody
 (Catalog: SAA544Rb19)

DAB staining on IHC-P;
 Sample: Porcine Cerebrum Tissue;
 Primary Ab: 20ug/ml Rabbit Anti-Human IBA1 Antibody
 Second Ab: 2µg/mL HRP-Linked Caprine Anti-Rabbit IgG Polyclonal Antibody
 (Catalog: SAA544Rb19)



DAB staining on IHC-P;
 Sample: Porcine Small intestine Tissue;

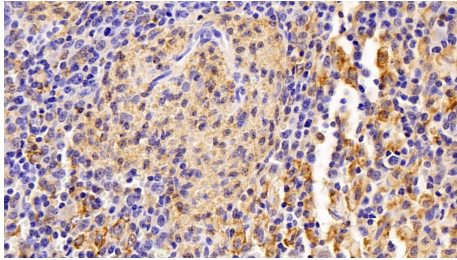
DAB staining on IHC-P;
 Sample: Porcine Lymph node Tissue;

DAB staining on IHC-P;
 Sample: Porcine Lung Tissue;

Primary Ab: 20ug/ml Rabbit Anti-
Human IBA1 Antibody
Second Ab: 2µg/mL HRP-Linked
Caprine Anti-Rabbit IgG Polyclonal
Antibody
(Catalog: SAA544Rb19)

Primary Ab: 20ug/ml Rabbit Anti-
Human IBA1 Antibody
Second Ab: 2µg/mL HRP-Linked
Caprine Anti-Rabbit IgG Polyclonal
Antibody
(Catalog: SAA544Rb19)

Primary Ab: 20ug/ml Rabbit Anti-
Human IBA1 Antibody
Second Ab: 2µg/mL HRP-Linked
Caprine Anti-Rabbit IgG Polyclonal
Antibody
(Catalog: SAA544Rb19)



DAB staining on IHC-P;

Sample: Porcine Spleen Tissue;

Primary Ab: 20ug/ml Rabbit Anti-
Human IBA1 Antibody

Second Ab: 2µg/mL HRP-Linked
Caprine Anti-Rabbit IgG Polyclonal
Antibody

(Catalog: SAA544Rb19)

[**IMPORTANT NOTE**]

The kit is designed for research use only, we will not be responsible for any issue if the kit was used in clinical diagnostic or any other procedures.