

**PAA780Bo01**

**Polyclonal Antibody to Lactoferrin (LTF)**

**Organism Species: *Bos taurus*; Bovine (Cattle)**

***Instruction manual***

FOR RESEARCH USE ONLY

NOT FOR USE IN CLINICAL DIAGNOSTIC PROCEDURES

---

13th Edition (Revised in Aug, 2023)

## **[ PROPERTIES ]**

**Source:** Polyclonal antibody preparation

**Host:** Rabbit

**Purification:** Antigen-specific affinity chromatography followed by Protein A affinity chromatography

**Traits:** Liquid

**Concentration:** 1mg/mL

**UOM:** 200µL

**Cross Reactivity:** Human; Porcine.

**Applications:** WB; IHC; ICC; IP.

## **[ IMMUNOGEN ]**

**Immunogen:** Recombinant LTF (Val25~Glu352) expressed in *E.coli*

**Accession No.:** RPA780Bo01

## **[ APPLICATIONS ]**

Western blotting: 0.01-2µg/mL;

Immunohistochemistry: 5-20µg/mL;

Immunocytochemistry: 5-20µg/mL;

Optimal working dilutions must be determined by end user.

## **[ FORMULATION ]**

**Form & Buffer:** Supplied as solution form in PBS, pH7.4, containing 0.02% NaN<sub>3</sub>, 50% glycerol.

## **[ STORAGE AND STABILITY ]**

**Storage:** Avoid repeated freeze/thaw cycles.

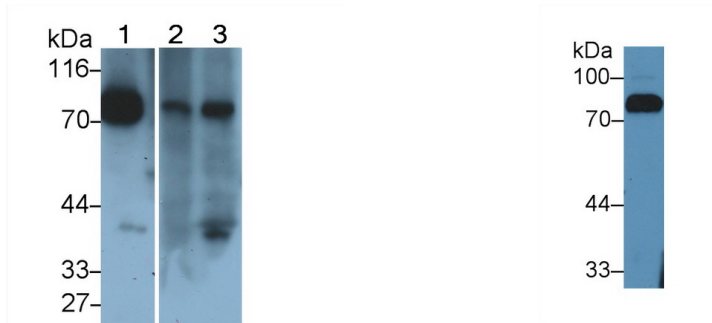
Store at 4°C for frequent use.

Aliquot and store at -20°C for 24 months.

**Stability Test:** The thermal stability is described by the loss rate. The loss rate was determined by accelerated thermal degradation test, that is, incubate the protein at 37°C for 48h, and no

obvious degradation and precipitation were observed. The loss rate is less than 5% within the expiration date under appropriate storage condition.

**[ IDENTIFICATION ]**



Western Blot; Sample: Lane1: Bovine Serum;	Western Blot; Sample: Bovine Serum
Lane2: Porcine Spleen lysate;	Primary Ab: 2µg/mL Rabbit Anti-Bovine
Lane3: Human Milk Primary Ab:	LTF Antibody
0.1µg/ml Rabbit Anti-Bovine LTF	Second Ab: 0.2µg/mL HRP-Linked
Antibody Second Ab: 0.2µg/mL HRP-Linked	Caprine Anti-Rabbit IgG Polyclonal
Caprine Anti-Rabbit IgG Polyclonal Antibody (Catalog: SAA544Rb19)	Antibody (Catalog: SAA544Rb19)

**[ IMPORTANT NOTE ]**

The kit is designed for research use only, we will not be responsible for any issue if the kit was used in clinical diagnostic or any other procedures.