

**PAF548Hu01**

**Polyclonal Antibody to Lamin B1 (LMNB1)**

**Organism Species: *Homo sapiens* (Human)**

***Instruction manual***

FOR RESEARCH USE ONLY

NOT FOR USE IN CLINICAL DIAGNOSTIC PROCEDURES

---

13th Edition (Revised in Aug, 2023)

### **[ PROPERTIES ]**

**Source:** Polyclonal antibody preparation

**Host:** Rabbit

**Purification:** Antigen-specific affinity chromatography followed by Protein A affinity chromatography

**Traits:** Liquid

**Concentration:** 0.31mg/mL

**UOM:** 20 $\mu$ L

**Cross Reactivity:** N/A

**Applications:** WB; IHC; ICC; IP.

### **[ IMMUNOGEN ]**

**Immunogen:** Recombinant LMNB1 (Ser52~Gly233) expressed in *E.coli*

**Accession No.:** RPF548Hu01

### **[ APPLICATIONS ]**

Western blotting: 0.01-2 $\mu$ g/mL;

Immunohistochemistry: 5-30 $\mu$ g/mL;

Immunocytochemistry: 5-30 $\mu$ g/mL;

Optimal working dilutions must be determined by end user.

### **[ FORMULATION ]**

**Form & Buffer:** Supplied as solution form in 0.01M PBS, pH7.4, containing 0.05% Proclin-300, 50% glycerol.

### **[ STORAGE AND STABILITY ]**

**Storage:** Avoid repeated freeze/thaw cycles.

Store at 4°C for frequent use.

Aliquot and store at -20°C for 24 months.

**Stability Test:** The thermal stability is described by the loss rate. The loss rate was determined by accelerated thermal degradation test, that is, incubate the protein at 37°C for 48h, and no

obvious degradation and precipitation were observed. The loss rate is less than 5% within the expiration date under appropriate storage condition.

**[ IDENTIFICATION ]**

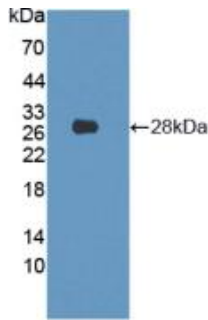
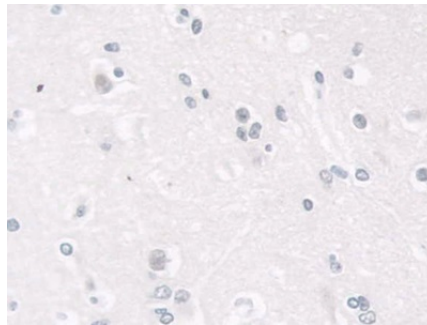
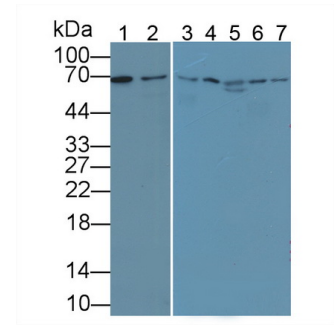


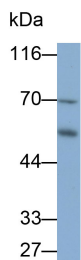
Figure. Western Blot; Sample: Recombinant LMNB1, Human.



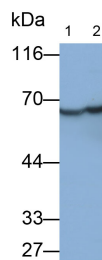
DAB staining on IHC-P; Samples: Human Cerebrum Tissue; Primary Ab: 30µg/ml Rabbit Anti-Human LMNB1 Antibody Second Ab: 2µg/mL HRP-Linked Caprine Anti-Rabbit IgG Polyclonal Antibody (Catalog: SAA544Rb19)



Western Blot; Sample: Lane1: Porcine Heart lysate; Lane2: Bovine Liver lysate; Lane3: Bovine Cerebrum lysate; Lane4: Bovine Heart lysate; Lane5: Caprine Liver lysate; Lane6: Caprine Cerebrum lysate; Lane7: Caprine Heart lysate  
Primary Ab: 1.5µg/mL Rabbit Anti-Human LMNB1 Ab  
Second Ab: 0.2µg/mL HRP-Linked Caprine Anti-Rabbit IgG Polyclonal Antibody (Catalog: SAA544Rb19)



Western Blot; Sample: Human Lung lysate  
Primary Ab: 0.1µg/ml Rabbit Anti-Human LMNB1 Antibody



Western Blot; Samples: Lane1: Mouse Cerebrum lysate; Lane2: HeLa cell lysate;  
Primary Ab: 0.1µg/ml Rabbit Anti-

Second Ab: 0.2?g/ml HRP-Linked  
Caprine Anti-Rabbit IgG Polyclonal  
Antibody  
(Catalog: SAA544Rb19)

Human LMNB1 Antibody  
Second Ab: 0.2?g/ml HRP-Linked  
Caprine Anti-Rabbit IgG Polyclonal  
Antibody  
(Catalog: SAA544Rb19)

**[ IMPORTANT NOTE ]**

The kit is designed for research use only, we will not be responsible for any issue if the kit was used in clinical diagnostic or any other procedures.