

PAC175Hu03

**Polyclonal Antibody to Left/Right Determination Factor 1 (LEFTY1)****Organism Species: Homo sapiens (Human)****Instruction manual**

FOR IN VITRO USE AND RESEARCH USE ONLY

NOT FOR USE IN CLINICAL DIAGNOSTIC PROCEDURES

9th Edition (Revised in Jul, 2013)

**[ PRODUCT INFORMATION ]****Immunogen:** LEFTY1, Human**Clonality:** Polyclonal**Host:** Rabbit**Immunoglobulin Type:** IgG**Purification:** Affinity Chromatography.**Applications:** WB, ICC, IHC-P, IHC-F, ELISA**Concentration:** 200µg/mL**UOM:** 100µg**[ IMMUNOGEN INFORMATION ]****Immunogen:** Recombinant LEFTY1 (Leu43~Leu364) expressed in *E.coli*.**Accession No.:** RPC175Hu03**Sequence:** The target protein is fused with two N-terminal Tags, His-tag and T7-tag and its sequence is listed below.

MGSSHHHHHH SSSLVPRGSH MASMTGGQQM GRGSEF-LDRADMEE LVIPTHVRAQ  
YVALLQRSHG DRSRGKRFSQ SFREVAGRFL ALEASTHLLV FGMEQRLPPN SELVQAVLRL  
FQEPVPAAL HRHGRLSPRS ARARVTVEWL RVRDDGSNRT SLIDSRLVSV HESGWKAQFDV  
TEAVNFWQQL SRPRQPLLLQ VSVQREHLGP LASGAHKLVR FASQGAPAGL GEPQLELHTL  
DLGDYGAQGD CDPEAPMTEG TRCCRQEMYI DLQGMKWAEN WVLEPPGFLA  
YECVGTCTRPQ PEALAFKWPFLGPRQCIASE TDSLPMIVSI KEGGRTRPQV VSLPNMRVQK  
CSCASDGALV PRRL

**[ ANTIBODY SPECIFICITY ]**

The antibody is a rabbit polyclonal antibody raised against LEFTY1. It has been selected for its ability to recognize LEFTY1 in immunohistochemical staining and western blotting.

**[ APPLICATIONS ]**

Western blotting: 1:100-400

Immunocytochemistry in formalin fixed cells: 1:100-500

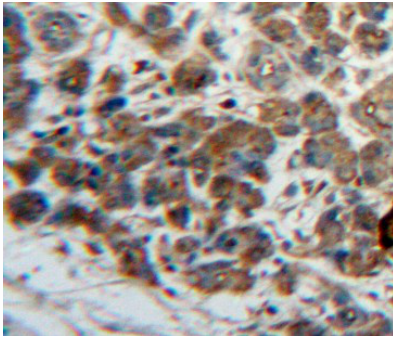
Immunohistochemistry in formalin fixed frozen section: 1:100-500

Immunohistochemistry in paraffin section: 1:50-200

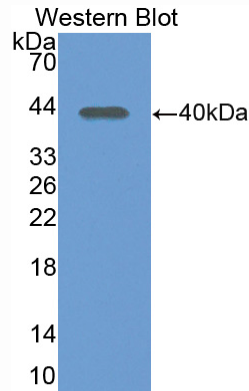
Enzyme-linked Immunosorbent Assay: 1:100-200

Optimal working dilutions must be determined by end user.

## [ **IMAGES** ]



Used in DAB staining on formalin fixed  
paraffin-embedded Pancreas tissue



Used in Western Blot, Sample:  
Recombinant LEFTY1, Human

## [ **CONTENTS** ]

**Form & Buffer:** Supplied as solution form in PBS, pH7.4, containing 0.02%  $\text{NaN}_3$ , 50% glycerol.

## [ **QUALITY CONTROL** ]

**Content:** The quality control contains recombinant LEFTY1 (Leu43~Leu364) disposed in loading buffer.

**Usage:** 10uL per well when 3,3'-Diaminobenzidine(DAB) as the substrate.  
5uL per well when used in enhanced chemiluminescent (ECL).

**Note:** The quality control is specifically manufactured as the positive control. Not used for other purposes.

**Loading Buffer:** 100mM Tris(pH8.8), 2% SDS, 200mM NaCl, 50% glycerol, BPB 0.01%,  $\text{NaN}_3$  0.02%.

## [ **STORAGE** ]

Store at 4°C for frequent use. Stored at -20°C to -80°C in a manual defrost freezer for one year without detectable loss of activity. Avoid repeated freeze-thaw cycles.