

**pA90087Rb21**  
**Monoclonal Antibody to Monocyte Chemotactic Protein 1 (MCP1)**  
**Organism: Oryctolagus cuniculus (Rabbit)**  
***Instruction manual***

FOR IN VITRO USE AND RESEARCH USE ONLY  
NOT FOR USE IN CLINICAL DIAGNOSTIC PROCEDURES

7th Edition (Revised in May, 2013)

**[ PRODUCT INFORMATION ]**

**Immunogen:** MCP1, Rabbit

**Clonality:** Monoclonal

**Host:** Mouse

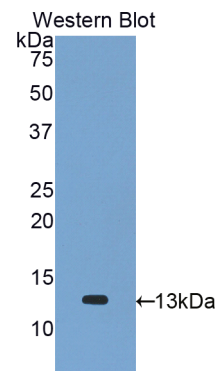
**Immunoglobulin Type:** IgG

**Purification:** Affinity Chromatography.

**Applications:** WB, ICC, IHC-P, IHC-F, ELISA

**Concentration:** 500µg/mL

**UOM:** 200µg



*Sample: Recombinant MCP1, Rabbit*




**[ IMMUNOGEN INFORMATION ]**

**Immunogen:** Recombinant MCP1 (Gln24~Leu125) expressed in *E.coli*.

**USCN Accession No.:** rP90087Rb01

**Sequence:** The target protein is fused with N-terminal His-Tag and its sequence is listed below.

MGHHHHHSGS-QPDAVNS PVTCCYTFTN KTISVKRLMS YRRINSTKCP KEAVIFMTKL  
AKGICADPKQ KVVQDAIANL DKKMQTPKTL TSYSTTQEHT TNLSSTRTPS TTSL

*Unique product Superb quality Client favorite Nicest service*  ISO9001:2008 ;  ISO13485:2003 ; 

## [ **ANTIBODY SPECIFICITY** ]

Anti MCP1 is a mouse monoclonal antibody raised against MCP1. It has been selected for its ability to recognize MCP1 in immunohistochemical staining and western blotting.

## [ **APPLICATIONS** ]

Western blotting: 1:100-400

Immunocytochemistry in formalin fixed cells: 1:100-500

Immunohistochemistry in formalin fixed frozen section: 1:100-500

Immunohistochemistry in paraffin section: 1:50-200

Enzyme-linked Immunosorbent Assay: 1:100-200

Optimal working dilutions must be determined by end user.

## [ **CONTENTS** ]

**Form & Buffer:** Supplied as solution form in PBS, pH7.4, containing 0.02% NaN<sub>3</sub>, 50% glycerol.

## [ **STORAGE** ]

Store at 4°C for frequent use. Stored at -20°C to -80°C in a manual defrost freezer for one year without detectable loss of activity. Avoid repeated freeze-thaw cycles.