

**PAS952Ra01**

**Polyclonal Antibody to NADH Dehydrogenase 5 (ND5)**

**Organism Species: *Rattus norvegicus* (Rat)**

***Instruction manual***

FOR RESEARCH USE ONLY

NOT FOR USE IN CLINICAL DIAGNOSTIC PROCEDURES

---

13th Edition (Revised in Aug, 2023)

### **[ PROPERTIES ]**

**Source:** Polyclonal antibody preparation

**Host:** Rabbit

**Purification:** Antigen-specific affinity chromatography followed by Protein A affinity chromatography

**Traits:** Liquid

**Concentration:** 500µg/mL

**UOM:** 100µL

**Cross Reactivity:** Human; Mouse

**Applications:** WB,IHC

### **[ IMMUNOGEN ]**

**Immunogen:** Recombinant ND5 (Arg424~Pro482) expressed in *E.coli*

**Accession No.:** RPS952Ra01

### **[ APPLICATIONS ]**

Western blotting: 0.01-5µg/mL;

Immunohistochemistry: 5-20µg/mL;

Optimal working dilutions must be determined by end user.

### **[ FORMULATION ]**

**Form & Buffer:** Supplied as solution form in 0.01M PBS, pH7.4, containing 0.05% Proclin-300, 50% glycerol.

### **[ STORAGE AND STABILITY ]**

**Storage:** Avoid repeated freeze/thaw cycles.

Store at 4°C for frequent use.

Aliquot and store at -20°C for 24 months.

**Stability Test:** The thermal stability is described by the loss rate. The loss rate was determined by accelerated thermal degradation test, that is, incubate the protein at 37°C for 48h, and no obvious degradation and precipitation were observed. The loss rate is less than 5% within the

expiration date under appropriate storage condition.

**[ IDENTIFICATION ]**

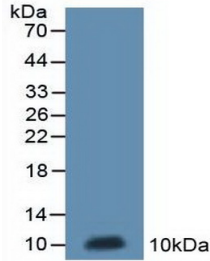
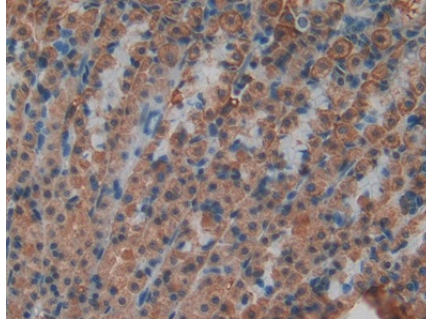
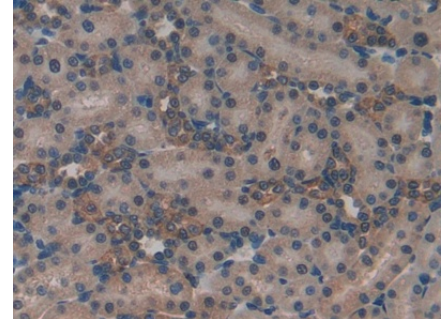


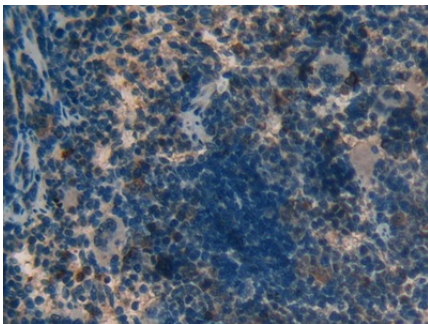
Figure. Western Blot; Sample:  
Recombinant ND5, Rat.



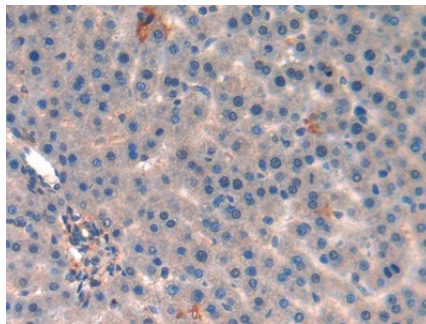
DAB staining on IHC-P; Samples: Rat  
Stomach Tissue; Primary Ab: 10µg/ml  
Rabbit Anti-Rat ND5 Antibody Second  
Ab: 2µg/mL HRP-Linked Caprine Anti-  
Rabbit IgG Polyclonal Antibody  
(Catalog: SAA544Rb19)



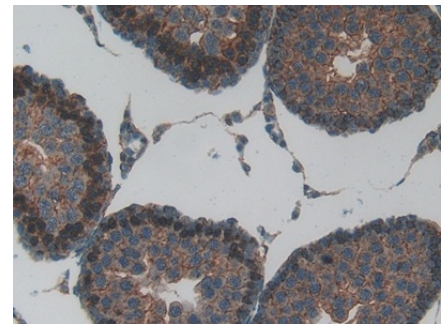
DAB staining on IHC-P;  
Samples: Rat Kidney Tissue;  
Primary Ab: 10µg/ml Rabbit Anti-Rat  
ND5 Antibody  
Second Ab: 2µg/mL HRP-Linked  
Caprine Anti-Rabbit IgG Polyclonal  
Antibody  
(Catalog: SAA544Rb19)



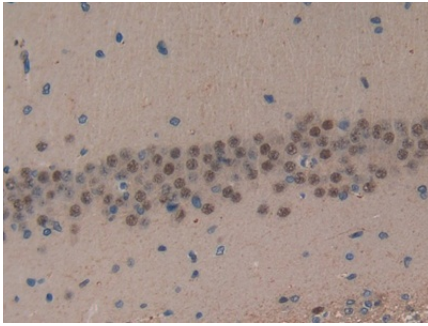
DAB staining on IHC-P;  
Samples: Rat Spleen Tissue;  
Primary Ab: 10µg/ml Rabbit Anti-Rat  
ND5 Antibody  
Second Ab: 2µg/mL HRP-Linked  
Caprine Anti-Rabbit IgG Polyclonal  
Antibody  
(Catalog: SAA544Rb19)



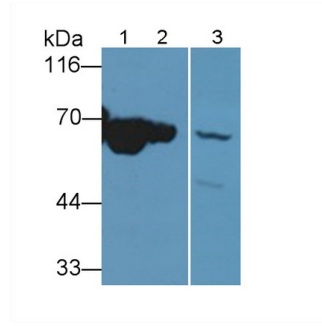
DAB staining on IHC-P;  
Samples: Rat Liver Tissue;  
Primary Ab: 10µg/ml Rabbit Anti-Rat  
ND5 Antibody  
Second Ab: 2µg/mL HRP-Linked  
Caprine Anti-Rabbit IgG Polyclonal  
Antibody  
(Catalog: SAA544Rb19)



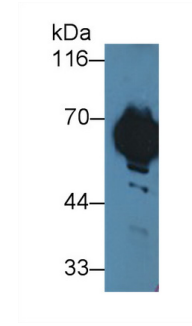
DAB staining on IHC-P;  
Samples: Rat Testis Tissue;  
Primary Ab: 10µg/ml Rabbit Anti-Rat  
ND5 Antibody  
Second Ab: 2µg/mL HRP-Linked  
Caprine Anti-Rabbit IgG Polyclonal  
Antibody  
(Catalog: SAA544Rb19)



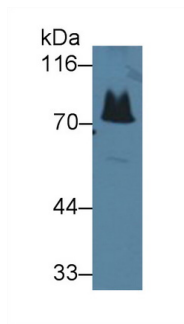
DAB staining on IHC-P;  
 Samples: Rat Brain Tissue;  
 Primary Ab: 10µg/ml Rabbit Anti-Rat  
 ND5 Antibody  
 Second Ab: 2µg/mL HRP-Linked  
 Caprine Anti-Rabbit IgG Polyclonal  
 Antibody  
 (Catalog: SAA544Rb19)



Western Blot; Sample: Lane1: Rat  
 Serum; Lane2: Rat Heart lysate; Lane3:  
 Rat Cerebrum lysate  
 Primary Ab: 5µg/ml Rabbit Anti-Rat  
 ND5 Antibody  
 Second Ab: 0.2µg/mL HRP-Linked  
 Caprine Anti-Rabbit IgG Polyclonal  
 Antibody  
 (Catalog: SAA544Rb19)



Western Blot; Sample: Human Serum  
 Primary Ab: 5µg/ml Rabbit Anti-Rat  
 ND5 Antibody  
 Second Ab: 0.2µg/mL HRP-Linked  
 Caprine Anti-Rabbit IgG Polyclonal  
 Antibody  
 (Catalog: SAA544Rb19)



Western Blot; Sample: Mouse Serum  
 Primary Ab: 5µg/ml Rabbit Anti-Rat  
 ND5 Antibody  
 Second Ab: 0.2µg/mL HRP-Linked  
 Caprine Anti-Rabbit IgG Polyclonal  
 Antibody  
 (Catalog: SAA544Rb19)

**[ IMPORTANT NOTE ]**

The kit is designed for research use only, we will not be responsible for any issue if the kit was used in clinical diagnostic or any other procedures.