

PAS272Hu01

Polyclonal Antibody to Notch2 N-Terminal Like Protein (NOTCH2NL)

Organism Species: *Homo sapiens* (Human)

Instruction manual

FOR RESEARCH USE ONLY

NOT FOR USE IN CLINICAL DIAGNOSTIC PROCEDURES

13th Edition (Revised in Aug, 2023)

[**PROPERTIES**]

Source: Polyclonal antibody preparation

Host: Rabbit

Purification: Antigen-specific affinity chromatography followed by Protein A affinity chromatography

Traits: Liquid

Concentration: 0.5mg/mL

UOM: 100µL

Cross Reactivity: Mouse;Bovine

Applications: WB; IHC

[**IMMUNOGEN**]

Immunogen: Recombinant NOTCH2NL (Met1~Asn236) expressed in *E.coli*

Accession No.: RPS272Hu01

[**APPLICATIONS**]

Western blotting: 0.01-2µg/mL;

Immunohistochemistry: 5-20µg/mL;

Immunocytochemistry: 5-20µg/mL;

Optimal working dilutions must be determined by end user.

[**FORMULATION**]

Form & Buffer: Supplied as solution form in 0.01M PBS, pH7.4, containing 0.05% Proclin-300, 50% glycerol.

[**STORAGE AND STABILITY**]

Storage: Avoid repeated freeze/thaw cycles.

Store at 4°C for frequent use.

Aliquot and store at -20°C for 24 months.

Stability Test: The thermal stability is described by the loss rate. The loss rate was determined by accelerated thermal degradation test, that is, incubate the protein at 37°C for 48h, and no

obvious degradation and precipitation were observed. The loss rate is less than 5% within the expiration date under appropriate storage condition.

[IDENTIFICATION]

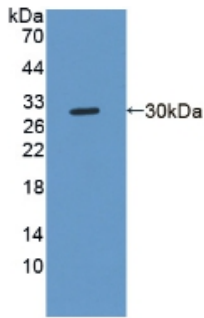
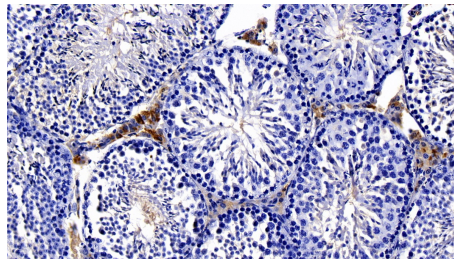
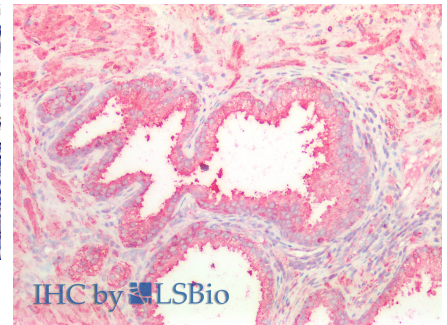


Figure. Western Blot; Sample: Recombinant NOTCH2NL, Human.



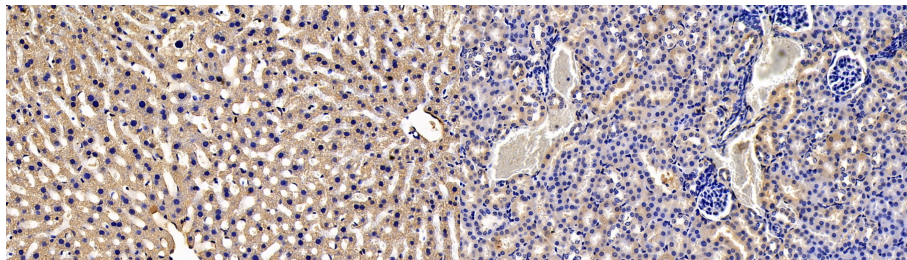
DAB staining on IHC-P; Sample: Mouse

Testis Tissue; Primary Ab: 20ug/ml Rabbit Anti-Human NOTCH2NL Antibody Second Ab: 2µg/mL HRP-Linked Caprine Anti-Rabbit IgG Polyclonal Antibody (Catalog: SAA544Rb19)



IHC by 

Vector Red staining on IHC-P; Samples: Human Prostate Tissue; Primary Ab: 10µg/mL Rabbit Anti-Human NOTCH2NL Antibody Second Ab: 2µg/mL HRP-Linked Caprine Anti-Rabbit IgG Polyclonal

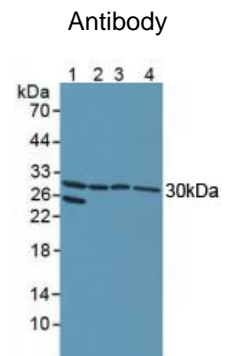


DAB staining on IHC-P;

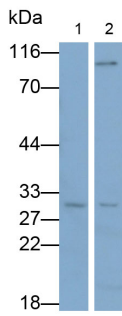
Sample: Mouse Liver Tissue; Primary Ab: 20µg/mL Rabbit Anti-Human NOTCH2NL Antibody Second Ab: 2µg/mL HRP-Linked Caprine Anti-Rabbit IgG Polyclonal Antibody (Catalog: SAA544Rb19)

DAB staining on IHC-P;

Sample: Mouse Kidney Tissue; Primary Ab: 20µg/mL Rabbit Anti-Human NOTCH2NL Antibody Second Ab: 2µg/mL HRP-Linked Caprine Anti-Rabbit IgG Polyclonal Antibody (Catalog: SAA544Rb19)



Western Blot; Sample: Lane1: Human Lung lysate; Lane2: HeLa cell lysate; Lane3: A549 cell lysate; Lane4: Bovine Testis lysate Primary Ab: 1µg/mL Rabbit Anti-Human NOTCH2NL Antibody Second Ab: 0.2µg/mL HRP-Linked Caprine Anti-Rabbit IgG Polyclonal Antibody (Catalog: SAA544Rb19)



Western Blot; Samples: Lane1: Mouse

Kidney lysate; Lane2: Hela cell lysate;

Primary Ab: 0.2 μ g/mL Rabbit Anti-

Human NOTCH2NL Antibody

Second Ab: 0.2 μ g/mL HRP-Linked

Caprine Anti-Rabbit IgG Polyclonal

Antibody

(Catalog: SAA544Rb19)

[**IMPORTANT NOTE**]

The kit is designed for research use only, we will not be responsible for any issue if the kit was used in clinical diagnostic or any other procedures.