

PAL059Mu02

Polyclonal Antibody to Parkinson Disease Protein 7 (PARK7)

Organism Species: *Mus musculus* (Mouse)

Instruction manual

FOR RESEARCH USE ONLY

NOT FOR USE IN CLINICAL DIAGNOSTIC PROCEDURES

12th Edition (Revised in Aug, 2016)

[PROPERTIES]

Source: Polyclonal antibody preparation

Host: Rabbit

Purification: Antigen-specific affinity chromatography followed by Protein A affinity chromatography

Traits: Liquid

Concentration: 0.5mg/ml

UOM: 200µl

Cross Reactivity: N/A

Applications: WB; IHC; ICC; IP.

[IMMUNOGEN]

Immunogen: Recombinant PARK7 (Ala2~Asp189) expressed in *E.coli*

Accession No.: RPL059Mu02

[APPLICATIONS]

Western blotting: 0.5-2µg/mL;

Immunohistochemistry: 5-20µg/mL;

Immunocytochemistry: 5-20µg/mL;

Optimal working dilutions must be determined by end user.

[FORMULATION]

Form & Buffer: Supplied as solution form in 0.01M PBS, pH7.4, containing 0.05% Proclin-300, 50% glycerol.

[STORAGE AND STABILITY]

Storage: Avoid repeated freeze/thaw cycles.

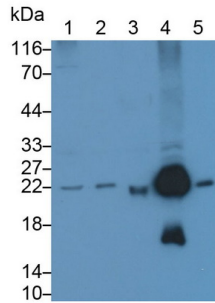
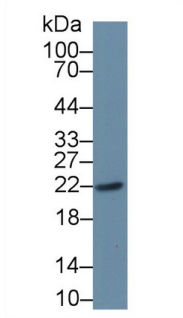
Store at 4°C for frequent use.

Aliquot and store at -20°C for 12 months.

Stability Test: The thermal stability is described by the loss rate. The loss rate was determined by accelerated thermal degradation test, that is, incubate the protein at 37°C for 48h, and no

obvious degradation and precipitation were observed. The loss rate is less than 5% within the expiration date under appropriate storage condition.

[IDENTIFICATION]



Western Blot; Sample: Lane1: Human Jurkat cell lysate Western Blot; Sample: Lane1: Hela cell lysate;

Jurkat cell lysate

lysate; Lane2: HepG2 cell lysate;

Primary Ab: 1µg/mL Rabbit Anti-Mouse
PARK7 Antibody

Lane3: Mouse Serum; Lane4: Mouse
Liver lysate; Lane5: Mouse Cerebrum

Second Ab: 0.2µg/mL HRP-Linked

lysate

Caprine Anti-Rabbit IgG Polyclonal
Antibody

Primary Ab: 0.1µg/ml Rabbit Anti-
Mouse PARK7 Antibody

(Catalog: SAA544Rb19)

Second Ab: 0.2µg/mL HRP-Linked
Caprine Anti-Rabbit IgG Polyclonal

Antibody

(Catalog: SAA544Rb19)

[IMPORTANT NOTE]

The kit is designed for research use only, we will not be responsible for any issue if the kit was used in clinical diagnostic or any other procedures.