

**PAA602Hu02**

**Polyclonal Antibody to Peroxisomal Biogenesis Factor 2 (PEX2)**

**Organism Species: *Homo sapiens (Human)***

***Instruction manual***

FOR RESEARCH USE ONLY

NOT FOR USE IN CLINICAL DIAGNOSTIC PROCEDURES

---

13th Edition (Revised in Aug, 2023)

## **[ PROPERTIES ]**

**Source:** Polyclonal antibody preparation

**Host:** Rabbit

**Purification:** Antigen-specific affinity chromatography followed by Protein A affinity chromatography

**Traits:** Liquid

**Concentration:** 500µg/mL

**UOM:** 100µL

**Cross Reactivity:** Rat

**Applications:** WB; IHC

## **[ IMMUNOGEN ]**

**Immunogen:** Recombinant PEX2 (Ser233~Leu305) expressed in *E.coli*

**Accession No.:** RPA602Hu02

## **[ APPLICATIONS ]**

Western blotting: 0.5-5µg/mL;

Immunohistochemistry: 5-50µg/mL;

Immunocytochemistry: 5-50µg/mL;

Optimal working dilutions must be determined by end user.

## **[ FORMULATION ]**

**Form & Buffer:** Supplied as solution form in 0.01M PBS, pH7.4, containing 0.05% Proclin-300, 50% glycerol.

## **[ STORAGE AND STABILITY ]**

**Storage:** Avoid repeated freeze/thaw cycles.

Store at 4°C for frequent use.

Aliquot and store at -20°C for 24 months.

**Stability Test:** The thermal stability is described by the loss rate. The loss rate was determined by accelerated thermal degradation test, that is, incubate the protein at 37°C for 48h, and no

obvious degradation and precipitation were observed. The loss rate is less than 5% within the expiration date under appropriate storage condition.

**[ IDENTIFICATION ]**

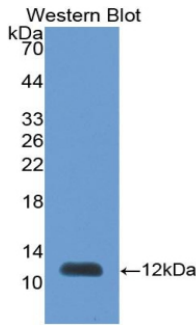
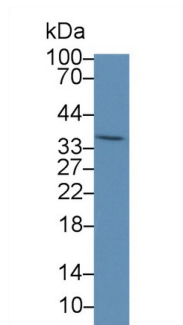
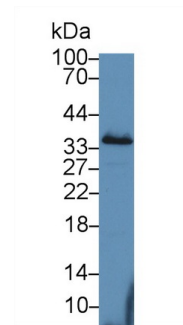


Figure. Western Blot; Sample: Recombinant PEX2, Human.



Western Blot; Sample: Human Liver lysate;



Western Blot; Sample: Human Hela cell lysate;

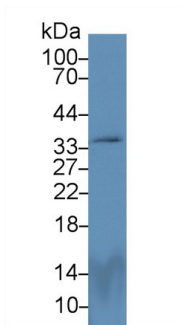
Primary Ab: 5µg/ml Rabbit Anti-Human PEX2 Antibody

Second Ab: 0.2µg/mL HRP-Linked Caprine Anti-Rabbit IgG Polyclonal Antibody

(Catalog: SAA544Rb19)

Second Ab: 0.2µg/mL HRP-Linked Caprine Anti-Rabbit IgG Polyclonal Antibody

(Catalog: SAA544Rb19)

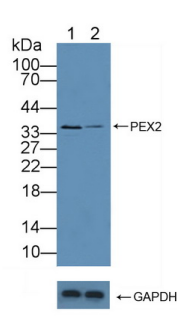


Western Blot; Sample: Rat Cerebrum lysate;

Primary Ab: 5µg/ml Rabbit Anti-Human PEX2 Antibody

Second Ab: 0.2µg/mL HRP-Linked Caprine Anti-Rabbit IgG Polyclonal Antibody

(Catalog: SAA544Rb19)



Knockout Varification:

Lane 1: Wild-type Hela cell lysate;

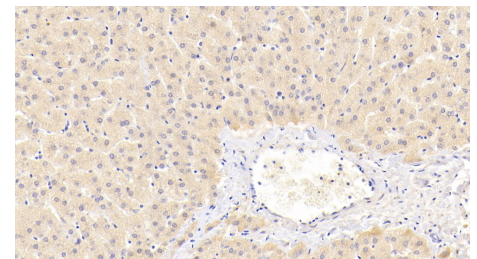
Lane 2: PEX2 knockout Hela cell lysate;

Predicted MW: 35kd

Observed MW: 35kd

Primary Ab: 5µg/ml Rabbit Anti-Human PEX2 Antibody

Second Ab: 0.2µg/mL HRP-Linked



DAB staining on IHC-P; Samples:

Human Liver Tissue; Primary Ab: 20µg/ml Rabbit Anti-Human PEX2 Antibody Second Ab: 2µg/mL HRP-Linked Caprine Anti-Rabbit IgG Polyclonal Antibody (Catalog:

SAA544Rb19)

Caprine Anti-Rabbit IgG Polyclonal  
Antibody  
(Catalog: SAA544Rb19)

**[ IMPORTANT NOTE ]**

The kit is designed for research use only, we will not be responsible for any issue if the kit was used in clinical diagnostic or any other procedures.