

PAJ829Hu01

Polyclonal Antibody to Phosphoinositide-3-Kinase Catalytic Beta Polypeptide (PIK3Cb)

Organism Species: *Homo sapiens* (Human)

Instruction manual

FOR RESEARCH USE ONLY

NOT FOR USE IN CLINICAL DIAGNOSTIC PROCEDURES

12th Edition (Revised in Aug, 2016)

[PROPERTIES]

Source: Polyclonal antibody preparation

Host: Rabbit

Purification: Antigen-specific affinity chromatography followed by Protein A affinity chromatography

Traits: Liquid

Concentration: 0.29mg/ml

UOM: 100µl

Cross Reactivity: Mouse;Rat;Porcine;Bovine

Applications: WB; IHC; ICC; IP.

[IMMUNOGEN]

Immunogen: Recombinant PIK3Cb (Ala524~Val703) expressed in *E.coli*

Accession No.: RPJ829Hu01

[APPLICATIONS]

Western blotting: 0.5-2µg/mL;

Immunohistochemistry: 5-20µg/mL;

Immunocytochemistry: 5-20µg/mL;

Optimal working dilutions must be determined by end user.

[FORMULATION]

Form & Buffer: Supplied as solution form in 0.01M PBS, pH7.4, containing 0.05% Proclin-300, 50% glycerol.

[STORAGE AND STABILITY]

Storage: Avoid repeated freeze/thaw cycles.

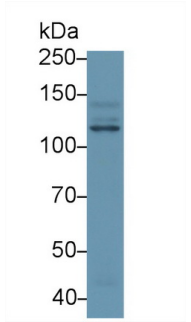
Store at 4°C for frequent use.

Aliquot and store at -20°C for 24 months.

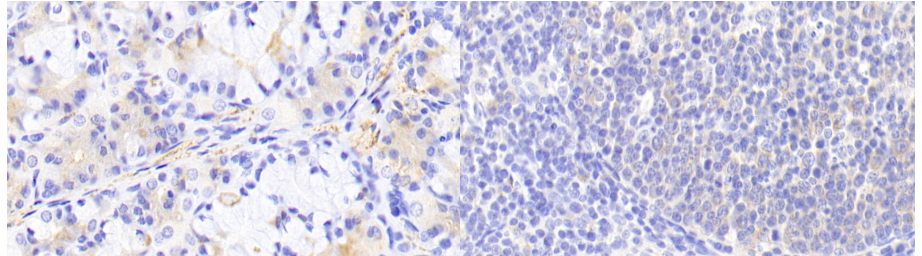
Stability Test: The thermal stability is described by the loss rate. The loss rate was determined by accelerated thermal degradation test, that is, incubate the protein at 37°C for 48h, and no

obvious degradation and precipitation were observed. The loss rate is less than 5% within the expiration date under appropriate storage condition.

[IDENTIFICATION]

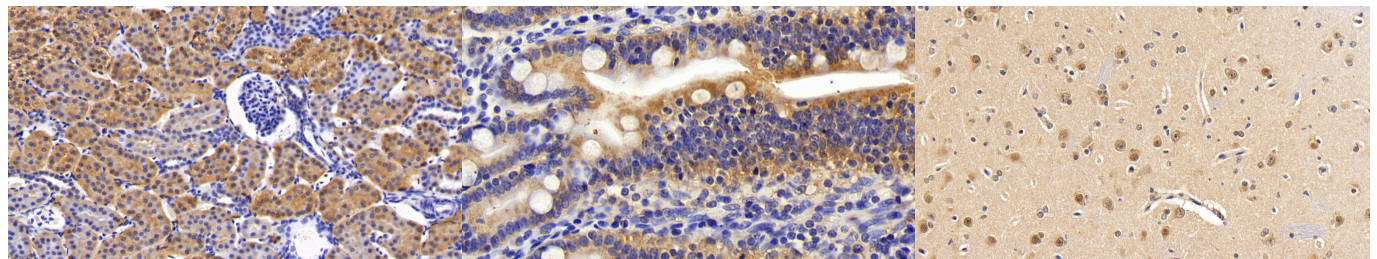


Western Blot; Sample: Human Hela cell lysate; Primary Ab: 1µg/ml Rabbit Anti-Human PIK3Cb Antibody Second Ab: 0.2µg/mL HRP-Linked Caprine Anti-Rabbit IgG Polyclonal Antibody (Catalog: SAA544Rb19)



DAB staining on IHC-P;
 Samples: Human Stomach Tissue;
 Primary Ab: 20?g/ml Rabbit Anti-Human PIK3Cb Antibody
 Second Ab: 2µg/mL HRP-Linked Caprine Anti-Rabbit IgG Polyclonal Antibody
 (Catalog: SAA544Rb19)

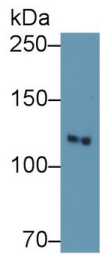
DAB staining on IHC-P;
 Samples: Human Lymph node Tissue;
 Primary Ab: 20?g/ml Rabbit Anti-Human PIK3Cb Antibody
 Second Ab: 2µg/mL HRP-Linked Caprine Anti-Rabbit IgG Polyclonal Antibody
 (Catalog: SAA544Rb19)



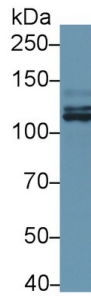
DAB staining on IHC-P;
 Sample: Human Kidney Tissue;
 Primary Ab: 20?g/ml Rabbit Anti-Human PIK3Cb Antibody
 Second Ab: 2µg/mL HRP-Linked Caprine Anti-Rabbit IgG Polyclonal Antibody
 (Catalog: SAA544Rb19)

DAB staining on IHC-P;
 Sample: Human Small intestine Tissue;
 Primary Ab: 20?g/ml Rabbit Anti-Human PIK3Cb Antibody
 Second Ab: 2µg/mL HRP-Linked Caprine Anti-Rabbit IgG Polyclonal Antibody
 (Catalog: SAA544Rb19)

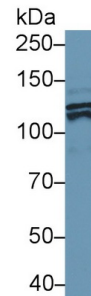
DAB staining on IHC-P;
 Sample: Human Cerebrum Tissue;
 Primary Ab: 20?g/ml Rabbit Anti-Human PIK3Cb Antibody
 Second Ab: 2µg/mL HRP-Linked Caprine Anti-Rabbit IgG Polyclonal Antibody
 (Catalog: SAA544Rb19)



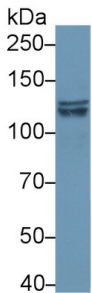
Western Blot; Sample: Porcine Liver lysate
 Primary Ab: 0.1 µg/ml Rabbit Anti-Human PIK3Cb Antibody
 Second Ab: 0.2 µg/mL HRP-Linked Caprine Anti-Rabbit IgG Polyclonal Antibody
 (Catalog: SAA544Rb19)



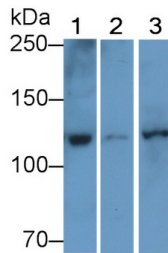
Western Blot; Sample: Human HepG2 cell lysate;
 Primary Ab: 1 µg/ml Rabbit Anti-Human PIK3Cb Antibody
 Second Ab: 0.2 µg/mL HRP-Linked Caprine Anti-Rabbit IgG Polyclonal Antibody
 (Catalog: SAA544Rb19)



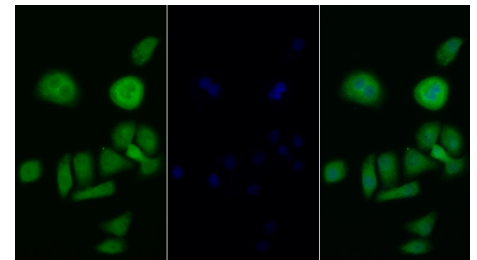
Western Blot; Sample: Human Jurkat cell lysate;
 Primary Ab: 1 µg/ml Rabbit Anti-Human PIK3Cb Antibody
 Second Ab: 0.2 µg/mL HRP-Linked Caprine Anti-Rabbit IgG Polyclonal Antibody
 (Catalog: SAA544Rb19)



Western Blot; Sample: Human K562 cell lysate;
 Primary Ab: 1 µg/ml Rabbit Anti-Human PIK3Cb Antibody
 Second Ab: 0.2 µg/mL HRP-Linked Caprine Anti-Rabbit IgG Polyclonal Antibody
 (Catalog: SAA544Rb19)



Western Blot; Sample: Lane1: Porcine Cerebrum lysate; Lane2: Rat Cerebrum lysate; Lane3: Bovine Cerebrum lysate
 Primary Ab: 1 µg/ml Rabbit Anti-Human PIK3Cb Antibody
 Second Ab: 0.2 µg/mL HRP-Linked Caprine Anti-Rabbit IgG Polyclonal Antibody
 (Catalog: SAA544Rb19)



FITC staining on IF;
 Sample: Human HeLa cell;
 Primary Ab: 20 µg/ml Rabbit Anti-Human PIK3Cb Antibody
 Second Ab: 1.5 µg/ml FITC-Linked Caprine Anti-Rabbit IgG Polyclonal Antibody
 (Catalog: SAA544Rb18)

[IMPORTANT NOTE]

The kit is designed for research use only, we will not be responsible for any issue if the kit was

used in clinical diagnostic or any other procedures.