

PAB972Mu01

Polyclonal Antibody to Pigment Epithelium Derived Factor (PEDF)

Organism Species: *Mus musculus* (Mouse)

Instruction manual

FOR RESEARCH USE ONLY

NOT FOR USE IN CLINICAL DIAGNOSTIC PROCEDURES

13th Edition (Revised in Aug, 2023)

[PROPERTIES]

Source: Polyclonal antibody preparation

Host: Rabbit

Purification: Antigen-specific affinity chromatography followed by Protein A affinity chromatography

Traits: Liquid

Concentration: 0.48mg/mL

UOM: 100µL

Cross Reactivity: Rat

Applications: WB; IHC; ICC; IP.

[IMMUNOGEN]

Immunogen: Recombinant PEDF (Ser19~Thr417) expressed in *E.coli*

Accession No.: RPB972Mu01

[APPLICATIONS]

Western blotting: 0.01-5µg/mL;

Immunohistochemistry: 5-50µg/mL;

Immunocytochemistry: 5-50µg/mL;

Optimal working dilutions must be determined by end user.

[FORMULATION]

Form & Buffer: Supplied as solution form in PBS, pH7.4, containing 0.02% NaN₃, 50% glycerol.

[STORAGE AND STABILITY]

Storage: Avoid repeated freeze/thaw cycles.

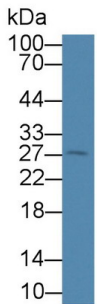
Store at 4°C for frequent use.

Aliquot and store at -20°C for 24 months.

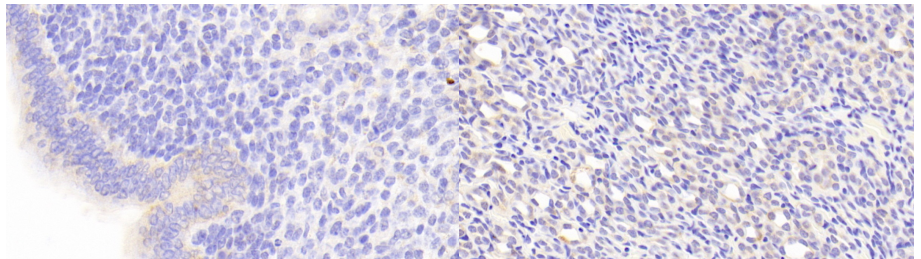
Stability Test: The thermal stability is described by the loss rate. The loss rate was determined by accelerated thermal degradation test, that is, incubate the protein at 37°C for 48h, and no

obvious degradation and precipitation were observed. The loss rate is less than 5% within the expiration date under appropriate storage condition.

[IDENTIFICATION]

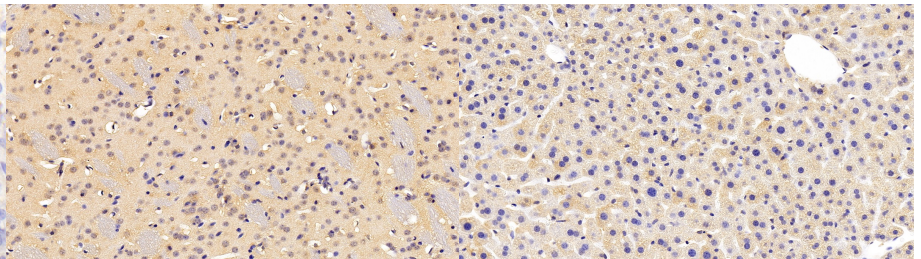
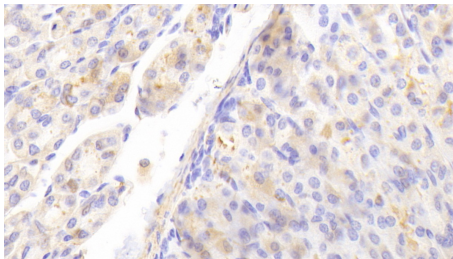


Western Blot; Sample: Mouse Serum;
 Primary Ab: 5µg/ml Rabbit Anti-Mouse
 PEDF Antibody Second Ab:
 0.2µg/mL HRP-Linked Caprine Anti-
 Rabbit IgG Polyclonal Antibody
 (Catalog: SAA544Rb19)



DAB staining on IHC-P; Samples:
 Mouse Uterus Tissue; Primary Ab:
 20?g/ml Rabbit Anti-Mouse PEDF
 Antibody Second Ab: 2µg/mL HRP-
 Linked Caprine Anti-Rabbit IgG
 Polyclonal Antibody (Catalog:
 SAA544Rb19)

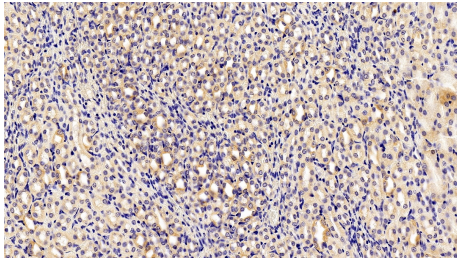
DAB staining on IHC-P;
 Samples: Mouse Kidney Tissue;
 Primary Ab: 20?g/ml Rabbit Anti-Mouse
 PEDF Antibody
 Second Ab: 2µg/mL HRP-Linked
 Caprine Anti-Rabbit IgG Polyclonal
 Antibody
 (Catalog: SAA544Rb19)



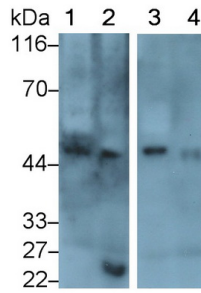
DAB staining on IHC-P;
 Samples: Mouse Stomach Tissue;
 Primary Ab: 20?g/ml Rabbit Anti-Mouse
 PEDF Antibody
 Second Ab: 2µg/mL HRP-Linked
 Caprine Anti-Rabbit IgG Polyclonal
 Antibody
 (Catalog: SAA544Rb19)

DAB staining on IHC-P;
 Sample: Mouse Cerebrum Tissue;
 Primary Ab: 20ug/ml Rabbit Anti-Mouse
 PEDF Antibody
 Second Ab: 2µg/mL HRP-Linked
 Caprine Anti-Rabbit IgG Polyclonal
 Antibody
 (Catalog: SAA544Rb19)

DAB staining on IHC-P;
 Sample: Mouse Liver Tissue;
 Primary Ab: 20ug/ml Rabbit Anti-Mouse
 PEDF Antibody
 Second Ab: 2µg/mL HRP-Linked
 Caprine Anti-Rabbit IgG Polyclonal
 Antibody
 (Catalog: SAA544Rb19)



DAB staining on IHC-P;



Sample: Mouse Kidney Tissue;
Primary Ab: 20ug/ml Rabbit Anti-Mouse
PEDF Antibody
Second Ab: 2µg/mL HRP-Linked
Caprine Anti-Rabbit IgG Polyclonal
Antibody
(Catalog: SAA544Rb19)

Western Blot; Sample: Lane1: Mouse
Serum; Lane2: Mouse Plasma; Lane3:
Rat Serum; Lane4: Rat Plasma
Primary Ab: 0.5µg/ml Rabbit Anti-
Mouse PEDF Antibody
Second Ab: 0.2µg/mL HRP-Linked
Caprine Anti-Rabbit IgG Polyclonal
Antibody
(Catalog: SAA544Rb19)

[IMPORTANT NOTE]

The kit is designed for research use only, we will not be responsible for any issue if the kit was used in clinical diagnostic or any other procedures.