

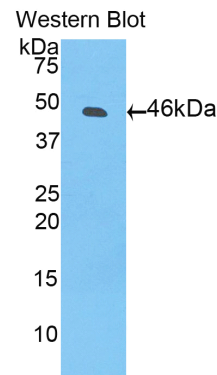
pA91236Hu02
Polyclonal Antibody to Plasminogen (Plg)
Organism: Homo sapiens (Human)
Instruction manual

FOR IN VITRO USE AND RESEARCH USE ONLY
 NOT FOR USE IN CLINICAL DIAGNOSTIC PROCEDURES

7th Edition (Revised in May, 2013)

[PRODUCT INFORMATION]




Immunogen: Plg, Human
Clonality: Polyclonal
Host: Rabbit
Immunoglobulin Type: IgG
Purification: Affinity Chromatography.
Applications: WB, ICC, IHC-P, IHC-F, ELISA
Concentration: 200µg/mL
UOM: 100µg



Sample: Recombinant Plg, Human

[IMMUNOGEN INFORMATION]

Immunogen: Recombinant Plg (Asn79~Pro466) expressed in *E. coli*.
USCN Accession No.: rP91236Hu02
Sequence: The target protein is fused with N-terminal His-Tag and its sequence is listed below.
 MGHHHHHHSG SEF-NR KSSIIIRMRD VVLFEEKVYL SECKTGNGKN YRGTMSTKTN
 GITCQKWSST SPHRPRFSPA THPSEGLEEN YCRNPDNDPQ GPWCYTDDPE KRYDYCDILE
 CEEECMHCSG ENYDGKISKT MSGLECAWD SQSPHAHGYI PSKFPNKNLK
 KNYCRNPDRE LRPWCFTTDP NKRWELCDIP RCTTPPPSSG PTYQCLKGTG
 ENYRGNVAVT VSGHTCQHWS AQTPTHNRT PENFPCKNLD ENYCRNPDGK
 RAPWCHTTNS QVRWEYCKIP SCDSSPVSTE QLAPTAPPEL TPVVQDCYHG
 DGQSYRGTS TTTTGKKCQS WSSMTPHRHQ KTPENYPNAGLTMNYCRNPD
 ADKGPWCFTT DPSVRWEYCN LKKCSGTEAS VVAPPP

Unique product Superb quality Client favorite Nicest service  ISO9001:2008;  ISO13485:2003;  CE

[ANTIBODY SPECIFICITY]

The antibody is a rabbit polyclonal antibody raised against Plg. It has been selected for its ability to recognize Plg in immunohistochemical staining and western blotting.

[APPLICATIONS]

Western blotting: 1:100-400

Immunocytochemistry in formalin fixed cells: 1:100-500

Immunohistochemistry in formalin fixed frozen section: 1:100-500

Immunohistochemistry in paraffin section: 1:50-200

Enzyme-linked Immunosorbent Assay: 1:100-200

Optimal working dilutions must be determined by end user.

[CONTENTS]

Form & Buffer: Supplied as solution form in PBS, pH7.4, containing 0.02% NaN₃, 50% glycerol.

[QUALITY CONTROL]

Content: The quality control contains recombinant Plg (Asn79~Pro466) disposed in loading buffer.

Usage: 10uL per well when 3,3'-Diaminobenzidine(DAB) as the substrate.
5uL per well when used in enhanced chemiluminescent (ECL).

Note: The quality control is specifically manufactured as the positive control. Not used for other purposes.

Loading Buffer: 100mM Tris(pH8.8), 2% SDS, 200mM NaCl, 50% glycerol, BPB 0.01%, NaN₃ 0.02%.

[STORAGE]

Store at 4°C for frequent use. Stored at -20°C to -80°C in a manual defrost freezer for one year without detectable loss of activity. Avoid repeated freeze-thaw cycles.